

Historic, archived document

Do not assume content reflects current scientific knowledge, policies, or practices.

2.43

Under 20

"IT'S NOT A HOME UNTIL IT'S PLANTED"

LIBRARY
RECEIVED
FEB 20 1939
U. S. Department of Agriculture



1939

ROSE HILL NURSERY

Nurserymen

Landscape Architects

MINNEAPOLIS AND ST. PAUL

Since 1874

NURSERY OFFICE HOURS

From April 10th to June 1st, the office is open from 7:30 A. M. until 9 P. M., balance of the year 8 A. M. until 5:30 P. M.

TWIN CITY DELIVERIES

Twin City orders amounting to \$1.50 or over are delivered free, otherwise a charge of 50c will be made to cover cost of delivery.

POSTAGE REQUIRED FOR ORDERS WANTED BY PARCEL POST

If shipment is desired by parcel post please include an amount to cover postage and packing. Please note average weights indicated at the headings of the various kinds of stock and compute the amount from the parcel post rates given on page 33.

SELECT YOUR OWN PLANTS

Our customers are welcome to select plants without extra charge in our 100 acre nursery. There is satisfaction in selecting your own plants where there are thousands of shrubs, trees and evergreens to choose from. If you cannot do so, however, we will make careful selection for you.

Direct from the grower you are assured fresh, healthy plants that have not been weakened by exposure in stores or sales grounds.

BENEFITS OF ORDERING EARLY

If customers will kindly place their orders as early as possible the best selection of stock and prompt delivery of the goods when planting time arrives will be assured them.

FREE PLANTING BOOKLET

A booklet giving instructions for the planting and care of nursery stock accompanies each order.

THE PLANTING SEASONS

Planting may be done in the spring, generally about April 1st to June 1st, or in the fall from September until the ground freezes solid.

PLANTING CHARGES

A planting charge of 45% of the cost of trees, shrubs and perennials, 30% of the cost of evergreens, and 15c per lineal foot of hedging, is made when we do the planting in the Twin Cities and suburbs. The minimum planting charge is \$2.00. Black soil, if required, is charged for on a yardage basis, \$2.50 being charged for a single yard or \$2.00 per yard when two yards or more are purchased, or the customer may furnish the soil. Carting away of poor soil or debris is also charged for.

ROSE HILL GUARANTEE

We use every precaution in the growing and handling of our stock to supply only plants of highest quality full of life and vigor. However, the Rose Hill Nursery agrees to replace at one-half the original price, any nursery stock purchased direct from them at the prices listed in this catalog, that dies before October first following planting. Prompt payment of accounts must be made in full or the above guarantee is void.

SPRAYING MATERIALS

ARSENATE OF LEAD (Powdered)

Kills all insects which eat the leaves, by poisoning them. May be dusted on dry or applied in liquid form. Directions are printed on the can.

One-half pound can.....\$0.40

BLACK LEAF 40

A highly recommended spray to kill plant lice and other sucking insects which cause the leaves to lose their color and curl up. Kills by coming into contact with the body of the insect. Directions on bottle.

1-oz. bottle\$0.35

DRY LIME SULPHUR

Dissolved in water it is used as a dormant spray against San Jose and Oyster Shell scale and as a summer spray against pine leaf scale.

1 lb.\$0.40

KOLO DUST FOR RED SPIDER ON EVERGREENS

A very efficient powder spray to kill the red spider

1 lb.....\$0.30 2 lbs.....\$0.50

SPRAYER (To Apply Liquids)

We offer and recommend a one-quart Mason jar sprayer. It is strongly built and the double siphon tube gives a large, dense, fog-like spray. Price, 75c each. Weight for shipping, 3 lbs.

DUSTER (To Apply Powders)

To combat certain insects it is best to use a dust spray. The duster we offer, though inexpensive, is strongly built and will operate successfully with all insect powders. Price, 45c each. Weight for shipping, 2 lbs.

MARSH HAY (For Winter Protection)

Perennial flowers and strawberries should be covered with marsh hay in late fall to protect them from alternate freezing and thawing, which causes winter injury. One bale will cover about 200 square feet of garden. For sale during October and November.

Per bale\$1.00



A scientifically prepared plant food for lawns, trees, flowers and gardens. See next page.

THE LAWN

The production of grass seed mixtures has through intense study, become highly specialized. Rose Hill Nursery offers lawn seed which is composed of a mixture, in correct proportions, of the grasses that have proven most satisfactory for this section. Only the highest quality seed of the various kinds is used; for the difference in cost between the very best seed and cheap seed is so little, and the difference in results from their use is so great.

Use 1 pound to 200 square feet of new lawn area to be seeded.



POSTAGE—Please include payment for postage if seed is desired by parcel post. See parcel post rates on page 33.

ROSE HILL LAWN SEED

The combination of seeds used in this mixture is the result of our many years of creating beautiful home grounds. Though the highest grade Kentucky Blue Grass forms the basis of this mixture, other grasses are used to hasten the lawn and act as a nurse crop to the blue grass seed, which is slow to germinate. No better lawn seed can be bought at any price and we highly recommend it to you as a mixture which will produce a beautiful, thrifty lawn.

1 lb.....40c 3 lbs.....\$1.15 5 lbs.....\$1.85 10 lbs.....\$3.60 20 lbs.....\$7.00

ROSE HILL SHADY PLACE SEED

This mixture has been especially developed to produce a lawn in fairly dense shade. Under evergreens and low branched trees, where no sun ever strikes, no grass can possibly survive, but where the shade is not too dense this mixture will prove satisfactory.

1 lb.....45c 3 lbs.....\$1.30 5 lbs.....\$2.10

ROSE HILL WHITE CLOVER

White clover foliage gives an appearance of richness to the lawn and the flowers find favor with many persons. May be seeded into established lawns to encourage a more luxuriant-appearing growth.

Half lb.....45c 1 lb.....90c 5 lbs.....\$4.25

ROSE HILL FERTILIZER

All vegetation is benefited by the intelligent application of a fertilizer because it supplies the soil with available plant food. Such application is followed by profit in the form of finer lawns, trees, shrubs, flowers and fruit.

Rose Hill Fertilizer is scientifically manufactured to be used in gardens, for feeding trees and on the lawn in the North Central states. It is odorless and pleasant to handle. Persons who are wise in fertilizer buying, judge the value of the fertilizer by the chemical analysis, which law requires be printed on every package of fertilizer. Rose Hill Fertilizer ranks among the very best in plant food value. The guaranteed analysis is Nitrogen 6%. Available Phosphoric Acid 10% and water soluble Potash 4%. Lawns especially require Nitrogen for luxurious growth. Being highly concentrated a small quantity of Rose Hill Fertilizer covers a large area.

Use 1 pound to each 35 square feet or 100 pounds to each 3500 square feet. See diagram on page 10 for proper amounts and method of use for feeding trees. Complete directions for applying accompany each bag of fertilizer.

100 lb. bag.....\$3.75 50 lb. bag.....\$1.95
25 lb. bag.....1.00 10 lb. bag......50

VIGORO

A Nationally-known Fertilizer
Use 100 lbs. of Vigoro to 2500 sq. ft.

100-lb. bag \$4.00 50-lb. bag \$2.50 25-lb. bag \$1.50

RICH PLANTING SOIL

Excellent planting soil delivered in the Twin Cities or suburbs at \$2.50 per single yard or \$2.00 per yard when two yards or more are purchased. Per sack, one bushel, \$0.50.

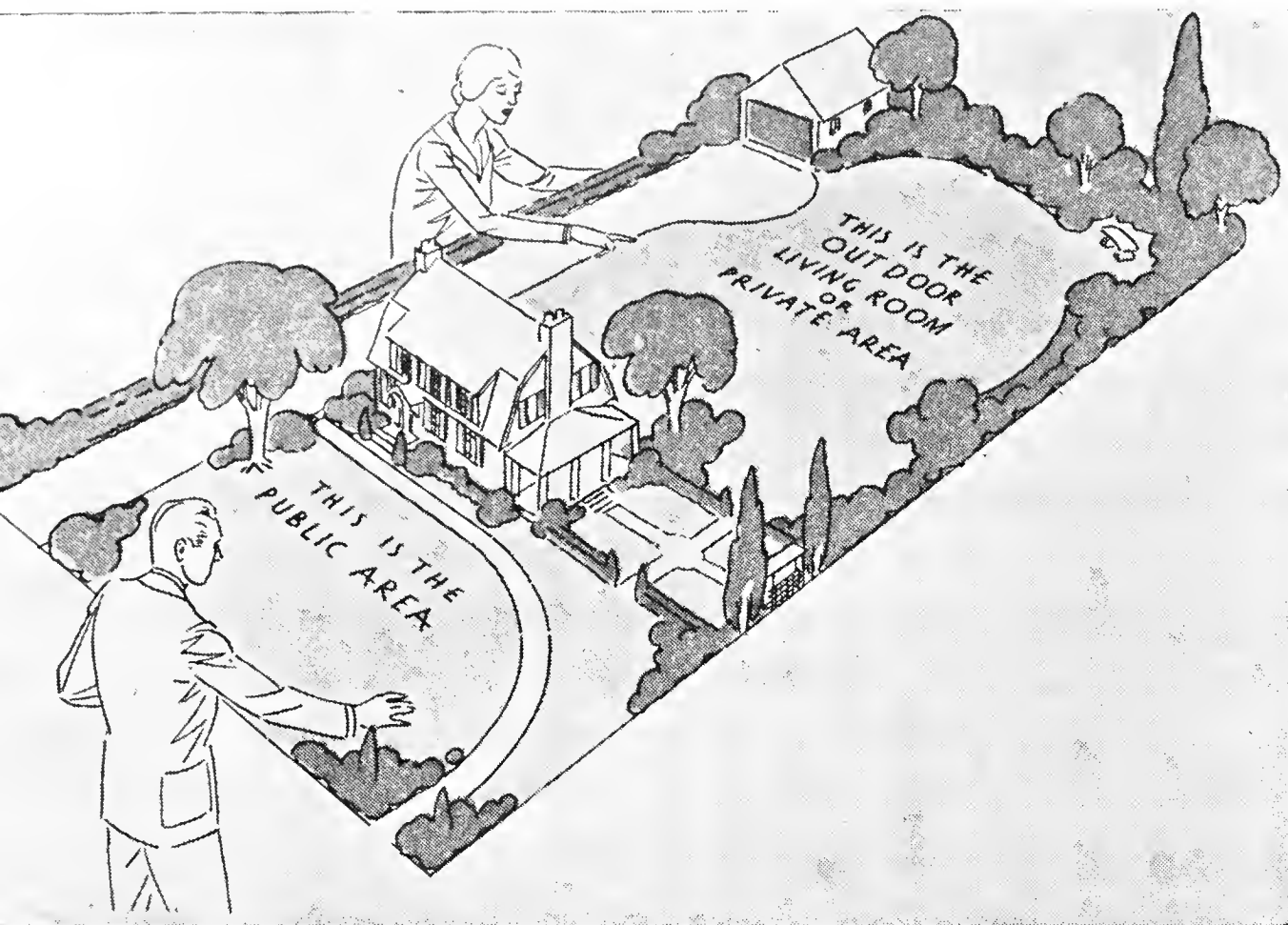
Lawn dressing soil \$2.75 per single yard, \$2.50 per yard for two yards or more.

PULVERIZED PEAT MOSS

A splendid material to spade into soils to make them in better condition for plant growth. Peat causes a clay soil to become more friable and holds moisture in sandy soils. Used as a mulch about plants or as a top dressing for lawns it helps greatly to conserve moisture. Odorless and pleasant to handle.

Per bushel.....60c 2 bushels.....\$1.00

YOUR HOME-A Place of Beauty



Experience the Joys of Gardening

Few activities in life yield such interesting pleasure and rich rewards as planting about the home grounds. No other hobby or pastime is so healthful, nor more interesting than working with flowers, plants and trees.

Planting offers the pleasure of anticipation, the benefit of outdoor fresh-air activity, a healthful degree of exercise, and continuous interest of changing beauty. The thrill of

achievement in overcoming obstacles, in winning rich reward as the result of careful effort and ability—is yours when you beautify your grounds.

Then comes the health building exercise of working among beautiful growing things. A season of this and there'll be color in your cheeks as well as in your garden.

And finally the reward—the delight of nature's beauty spread before you, the result of your small part in helping nature to create it. You'll know the pride that comes with a home beautified, the cheering company of color, the delicious taste of home grown fruits—and, by no means least, the increased value, of a property made attractive and desirable.

Visit Our Nursery

Here at Rose Hill Nursery you will find a hundred acres of the highest quality trees, shrubs, evergreens and hardy perennial flowers. These plants are grown for discriminating customers, who want the best of stock grown in the north to assure hardiness.

There are acres of evergreens you will enjoy seeing as well as shade trees, flowers and ornamental shrubs.

At tulip time, along the entrance drive, thousands of tulip blooms delight the eye and later peonies and other perennials are blooming in profusion.

Come and visit us—you are most welcome.

ENTRANCE TO OFFICE AND SALES GROUNDS



HOW TO REACH THE ROSE HILL NURSERY

From MINNEAPOLIS, by auto, drive out East Hennepin Ave. directly to the Nursery, which is located two blocks east of the city limits. New paving is now completed on East Hennepin Ave.

From Minneapolis, by streetcar, take Como-Harriet car going towards St. Paul, get off at Eustis Street and walk three blocks north.

From ST. PAUL, by auto, drive north on Snelling Ave. past Fair Grounds one-quarter mile to Larpenteur Ave. (also known as County Road A), turn west (left) one and one-half miles to our office.

From St. Paul, by streetcar, take Como-Harriet streetcar going west, get off at Eustis Street and walk three blocks north.

Use The Rose Hill Landscape Service

WE WILL PLAN FOR YOU

FURNISH THE BEST OF STOCK

AND DO THE PLANTING TOO

If you need help in the planning of your garden or grounds we will be happy to assist you.

Most folks have a love of flowers born in them. They know what trees and flowers they like and have some idea of how they would like their grounds to appear but they lack the knowledge or experience of the growing habits, needs and nature of various plants and their proper arrangement.

To plan well requires knowledge in the art of landscape design and familiarity with plant materials. The Rose Hill Nursery landscape department is maintained solely to serve those who desire help in the proper planning and planting of their grounds.



Beautiful grounds express refinement and good taste.

Rose Hill plans and Rose Hill plants are your guarantee of satisfaction.

OUR LANDSCAPE SERVICE TO RESIDENTS OF THE TWIN CITIES AND SUBURBS

To local residents, where personal consultation is possible, plans and estimates are furnished without charge.

Upon request, one of our landscape architects will call and consult with you. After securing such suggestions as you may have to offer regarding the landscape beautification, a plan and estimate is prepared and presented to you. This incurs no obligation. Or if you wish, you may bring a picture of your house or measurements of that part of your grounds you wish us to plan for and we will help you at the office. Besides doing the planning and furnishing the stock, our service is complete in that we do the planting, too, if you wish. Phone Nestor 7541 from either Minneapolis or St. Paul.

HOW WE SERVE OUT OF TOWN CUSTOMERS BY MAIL OR PERSONAL CALL

We offer a helpful mail advisory service to out of town customers. Upon request we will mail a chart, illustrating what information is required to enable our architects to intelligently help you. When you send us the necessary information we will suggest how best to make your property most attractive.

In the developing of larger residence properties, grounds about public buildings, parks or cemeteries, a personal call by one of our landscape architects is often advantageous. Our architects are available for such calls and we will gladly give full information regarding the cost of their services upon request.

Competent foremen are available to out of town residents who desire our supervision in the carrying out of a landscape development.

EARLY PLANNING SECURES THE MOST PROMPT SERVICE

We welcome the opportunity to plan for you at any time that meets with your convenience, but we can give the most prompt service before the rush brought by the warm days of spring. Snow on the ground is no hindrance to planning. February and March requests for planning help are especially welcome.

DECORATIVE SHRUBS

Fresh, Vigorous Plants—Sure to Grow

"IT'S NOT A HOME UNTIL IT'S PLANTED"



Flowering shrubs create natural beauty and loveliness and are indispensable to the landscape gardener.

Please note what an important part shrubs play in the landscape design to the left.

Against the house foundation the shrubs blend the house with the grounds and create a lovely softening effect. On both sides of the property and across the rear, shrubs contribute a delightful frame to the picture. They also give privacy and a beautiful background for annual and perennial flowers, besides their own beauty of flowers, berries and varying foliage colors.

Our large list of hardy varieties contains all the worth-while shrubs adapted to the rigorous climate of this section of the country. By thoughtful selection continuous interest may be obtained from early spring until late fall through successive blooming periods.

POSTAGE

If shipment is wanted by parcel post please add for postage and packing, figuring average weights for shrubs as follows: 12 to 18 in. shrub, 1 lb.; 18 to 24 in. shrub, 2 lbs.; 2 to 3 ft. shrubs, 3 lbs.; 3 to 4 ft. shrub, 4 lbs. See parcel post rates on page 33.

Now everyone can have an **OUTDOOR LIVING ROOM** . .

Heights of Shrubs following the name denote size at which the plants present their maximum beauty.

ALMOND, Flowering. (*Amygdalus*.) 4 to 5 ft. Small, pink or white double flowers along stems in May. Needs winter protection. Please specify color wanted.

2 to 3 ft. \$0.60 ea. 3 to 4 ft. \$0.75 ea.

ALMOND, Siberian. (*Amygdalus Siberica*.) 2 to 3 ft. This new variety of Almond is of dwarf growth, perfectly hardy without winter protection. The bush is completely covered with double, bright rose pink fragrant flowers early in the spring. The leaves turn to gold and red in the fall creating a beautiful appearance at that time also. Very desirable.

12 to 18 in. \$0.35 each 2 to 3 ft. \$0.75 each
18 to 24 in.60 each

ARALIA, Devil's Walking Stick. (*Aralia Spinosa*.) 8 to 10 ft. Attractive, tall-growing shrub with very prickly stems and large, deeply cut compound leaves 3 to 5 feet long. Tropical in appearance. Plant in protected locations. See cut page 5.

2 to 3 ft. \$0.75 ea. 3 to 4 ft. \$1.00 ea.

ARROWWOOD. (*Viburnum Dentatum*.) 7 to 8 ft. Flowers white, flat-topped, followed by blue berries in the fall. A large shrub with bright green foliage coloring prettily in the fall.

18 to 24 in. \$0.50 each 2 to 3 ft. \$0.60 each

BARBERRY, Japanese. (*Berberis Thunbergii*.) 2½ to 3 ft. A splendid dwarf shrub, conspicuous for its good foliage. The foliage is brilliantly colored in the fall and the attractive red berries cling well into the winter. A thrifty grower most anywhere. Good in front of taller-growing shrubs and as a hedge.

12 to 18 in. \$0.30 ea. 2 to 3 ft. \$0.60 ea.
18 to 24 in.40 ea.

(For Barberry hedge plants see page 14)

BARBERRY, Red-Leaved. 2½ to 3 ft. A recent introduction. Similar to the Japanese Barberry excepting in foliage which is a deep purplish red. A valuable shrub for color in the border.

12 to 18 in. \$0.50 ea. 2 to 3 ft. \$1.00 ea.
18 to 24 in.75 ea.

BUCKTHORN, Common. (*Rhamnus Catharticus*.) 6 to 7 ft. A very hardy shrub with dark green foliage. It will thrive in exposed locations where many other shrubs will not succeed. Valuable when planted as a shrub or when planted as a hedge. Stands shearing well.

2 to 3 ft. \$0.35 ea. 4 to 5 ft. \$0.75 ea.
3 to 4 ft.50 ea.

(For Buckthorn hedge plants see page 14)

BUCKTHORN, Glossy Leaved. (*Rhamnus Frangula*.) 6 to 7 ft. A handsome, tall shrub with shining dark green foliage. The attractive berries change from red to black. Distinctive in appearance.

2 to 3 ft. \$0.50 ea. 3 to 4 ft. \$0.75 ea.

BUTTERFLY BUSH. (*Buddleia*.) 4 to 5 ft. Also known as Summer Lilac, as it resembles the common lilac in general color and effect. It dies back with the frost in the fall and the dead wood should be cut back nearly to the ground; but the roots are usually uninjured and it quickly grows to a height of 3 to 5 feet or more, in the spring. It blooms continually from July to frost, bearing long, slender, arching spikes of light blue, lilac-like flowers, which are fragrant.

2 to 3 ft. \$0.50 ea.

CARAGANA or SIBERIAN PEA TREE. (*Caragana Arborescens*.) 8 to 10 ft. One of our hardiest shrubs. Covered in May with bright yellow flowers, followed by long, slender pods. Will thrive in exposed trying locations.

18 to 24 in. \$0.25 ea.
2 to 3 ft.40 ea.
3 to 4 ft.60 ea.
4 to 5 ft. 1.00 ea.

CHERRY, Choke. (*Prunus Virginiana*.) 10 to 12 ft. A large, handsome bush, or small tree, bearing strong scented white flowers in May. Dark red, pea sized fruit appears in July and August.

18 to 24 in. \$0.35 ea.
2 to 3 ft.50 ea.
3 to 4 ft.75 ea.
4 to 5 ft. 1.00 ea.
5 to 6 ft. 1.25 ea.

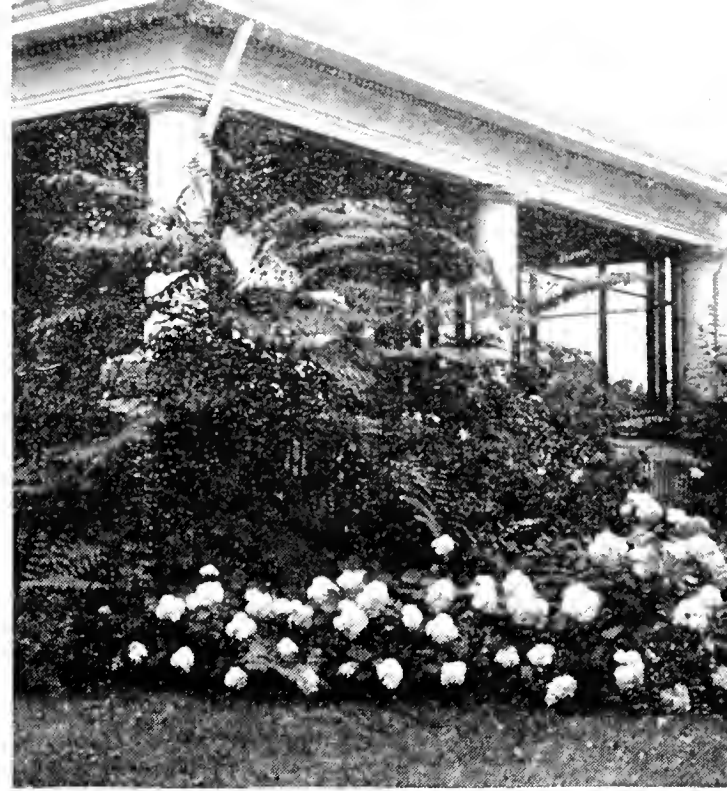
Barberry, Japanese



Elder, Cut-leaved



ROSE HILL NURSERY



Hydrangea, Hills of Snow, with white flowers. Aralia in background

CHERRY, European Bird or May Day Tree. (Prunus Padus.) 8 to 10 ft. One of earliest plants to leaf out in spring. The drooping racemes of white, very fragrant flowers literally cover the tree in early May, followed later by shining black berries which are attractive to birds.
2 to 3 ft.....\$0.50 ea. 3 to 4 ft.....\$0.75 ea.

CHERRY, Pin. (Prunus Pennsylvanica.) 8 to 9 ft. The slender, red-barked branches are covered with small white flowers which appear at the same time as the light green leaves. The light cherry-red fruit is about the size of a pea. This is an interesting ornamental tree.
2 to 3 ft.....\$0.50 ea. 6 to 8 ft.....\$2.00 ea.
3 to 4 ft......75 ea. 8 to 10 ft..... 2.50 ea.
4 to 5 ft..... 1.00 ea. 2 in. diam..... 4.00 ea.

CHERRY, Purple Leaf Sand or Cistena. (Prunus Pumila Purpurea.) 4 to 5 ft. A fine medium sized shrub for color effect having purple foliage throughout growing season. A most valuable and attractive shrub.
2 to 3 ft.....\$0.75 ea. 3 to 4 ft.....\$1.00 ea.

CHERRY, Sand. (Prunus Pumila.) 4 to 5 ft. Its small, numerous white blossoms in May and purplish black fruit later make it an attractive addition to the shrubbery border.
18 to 24 in.....\$0.35 ea. 3 to 4 ft.....\$0.75 ea.
2 to 3 ft......50 ea.

COTONEASTER or QUINCEBERRY. (Cotoneaster Acutifolia.) 5 to 6 ft. An attractive, dense-growing shrub with ornamental, shiny, dark green leaves. Fall coloration lovely. Very good in the border or for a hedge. This attractive shrub can be depended upon to grow and thrive where many other shrubs fail.

12 to 18 in.....\$0.25 ea. 2 to 3 ft.....\$0.50 ea.
18 to 24 in......35 ea. 3 to 4 ft......75 ea.
(For Cotoneaster hedge plants see page 14)

CRANBERRY, High Bush. (Viburnum Opulus.) 6 to 7 ft. Flowers white in flat clusters. Very decorative in fruit, which colors early, and holds its bright scarlet color until very late in the fall. The leaves turn to bright autumn colors in September or early October. Recommended where a fairly large attractive shrub is needed.

18 to 24 in.....\$0.35 ea. 3 to 4 ft.....\$0.75 ea.
2 to 3 ft......50 ea. 4 to 5 ft..... 1.00 ea.

CURRENT, Alpine or Mountain. (Ribes Alpinum.) 3 to 4 ft. A desirable, rather low-growing shrub of dense growth. Having foliage close to the ground it is a desirable plant for shrubbery borders. A dependable shrub for either shady or sunny locations.
12 to 18 in.....\$0.35 ea. 2 to 3 ft.....\$0.75 ea.
18 to 24 in......50 ea.
(For Alpine Currant hedging see page 14)

*Hydrangea Peegee
Flowers white changing to pink*



DOGWOOD, Golden Barked. (Cornus Aurea.) 5 to 6 ft. Attractive in winter with its golden yellow bark, especially in masses with red-barked varieties. Flowers white.

2 to 3 ft.....\$0.50 ea. 3 to 4 ft.....\$0.75 ea.

DOGWOOD, Red Twigged Siberian. (Cornus Siberica.) 5 to 6 ft. A superior variety of the Red Twigged Dogwoods. Its symmetrical growth and very bright red branches make it very desirable. White flowers.

18 to 24 in.....\$0.35 ea. 3 to 4 ft.....\$0.75 ea.
2 to 3 ft......50 ea. 4 to 5 ft..... 1.00 ea.

DOGWOOD, Siberian Variegated Leaved. (Cornus Siberica Variegata.) 4 to 5 ft. Its green leaves with white stripes make this plant very attractive. Its white flowers and red bark are also interesting.

18 to 24 in.....\$0.50 ea. 2 to 3 ft.....\$0.75 ea.

ELDER, Black-Berried. (Sambucus Canadensis.) 6 to 7 ft. A large rapid-growing shrub with flat clusters of white blossoms followed by large clusters of black berries. Stands shade. Fruit used for wine or in pies.

2 to 3 ft.....\$0.50 ea. 4 to 5 ft.....\$1.00 ea.
3 to 4 ft......75 ea.

ELDER, Cut-Leaved. (Sambucus Canadensis Laciniata.) 6 to 7 ft. The beautiful fern-like foliage and strong growth in either sunny or partially shaded locations make this plant very desirable. White flowers.

2 to 3 ft.....\$0.50 ea. 3 to 4 ft.....\$0.75 ea.

ELDER, Golden. (Sambucus Aurea.) 6 to 7 ft. White flowers. The golden colored leaves contrast beautifully with the greens of other shrubs. Leaves color best when planted in full sun.

2 to 3 ft.....\$0.50 ea.
3 to 4 ft......75 ea.

ELDER, Red-Berried. (Sambucus Racemosa.)

6 to 7 ft. Fragrant white blossoms in great profusion followed by bunches of red berries attractive to the birds. Of vigorous growth; stands partial shade.

2 to 3 ft.....\$0.50 ea.
3 to 4 ft......75 ea.
4 to 5 ft..... 1.00 ea.

Screen Out Objectionable Views With Shrubs and Trees



UNSIGHTLY VIEWS



SCREENED WITH PLANTING



Before and After Planting

From desolation, this little house was transformed to a home within a fairy garden by means of plants and flowers.

EUONYMUS, Burning Bush. (Euonymus Atropurpurea.) 6 to 7 ft. A tall shrub covered in fall with bright red fruit which opens and displays the seeds enclosed in their scarlet aril. One of the most attractive fall shrubs.

18 to 24 in.....\$0.40 ea. 4 to 5 ft.....\$1.00 ea.
 2 to 3 ft..... .60 ea. 5 to 6 ft..... 1.50 ea.
 3 to 4 ft..... .85 ea.

EUONYMUS, Winged Burning Bush. (Euonymus Alatus.) 6 to 7 ft. Yellow flowers in May and June. Triangular interesting cork bark. Red fruit that clings well into the winter. Leaves turn brilliant crimson in autumn. A very interesting and attractive shrub.

2 to 3 ft.....\$0.75 ea. 3 to 4 ft.....\$1.00 ea.

FORSYTHIA, Golden Bell. (Forsythia Suspensa Fortunei.) 5 to 6 ft. The arching branches are covered in very early spring with golden yellow flowers. Clean, handsome foliage. Half hardy.

2 to 3 ft.....\$0.50 ea. 3 to 4 ft.....\$0.75 ea.

HAWTHORN or THORNAPPLE. (Crataegus.) 10 to 12 ft. A profusion of white flowers followed by a rich display of red berries.

2 to 3 ft.....\$0.75 ea. 4 to 5 ft.....\$1.50 ea.
 3 to 4 ft..... 1.00 ea.

HONEYSUCKLE, Morrows. (Lonicera Morrowi.) 6 to 7 ft. Creamy white flowers produced in May followed by bright red berries. A thrifty grower with arching branches well suited for general yard use.

18 to 24 in.....\$0.30 ea. 3 to 4 ft.....\$0.50 ea.
 2 to 3 ft..... .40 ea.

HONEYSUCKLE, Tartarian. (Lonicera Tatarica.) 6 to 7 ft. Very hardy, large-growing, covered with attractive small flowers, in either red, pink or white colors. The whole bush is covered with beautiful red berries in the fall. A very good shrub. See picture below.

18 to 24 in.....\$0.30 ea. 3 to 4 ft.....\$0.50 ea.
 2 to 3 ft..... .40 ea. 4 to 5 ft..... .75 ea.
 (For Honeysuckle hedging see page 14)

Tartarian Honeysuckle



HYDRANGEA, Peegee. (Hydrangea Paniculata Grandiflora.) 3 to 4 ft. Medium sized with immense conical shaped white flowers which later change to pink. These are produced in August and September when few other shrubs are in bloom. Flowers may be cut before freezing for winter bouquets. See cut page 5.

12 to 18 in.....\$0.35 ea. 2 to 3 ft.....\$0.75 ea.
 18 to 24 in..... .50 ea. 3 to 4 ft..... 1.00 ea.

HYDRANGEA, Hills of Snow. (Hydrangea Arborescens Sterilis.) 3 to 4 ft. A valuable shrub with large snow-white blossoms. Commences to bloom in June and continues until early fall. Will grow in partial shade. See cut page 5.

12 to 18 in.....\$0.35 ea. 2 to 3 ft.....\$0.75 ea.
 18 to 24 in..... .50 ea. 3 to 4 ft..... 1.00 ea.

HYDRANGEA, Tree Form. 5 to 6 ft. This is a tree form of the Peegee Hydrangea, trained on a straight stem to produce a small tree for specimen planting.

3 to 4 ft.....\$1.25 ea. 4 to 5 ft.....\$1.75 ea.

JUNEBERRY. (Amelanchier Canadensis.) 5 to 6 ft. A beautiful May flowering shrub. Every branch a mass of delicate white bloom. Fruit resembles blueberries in appearance and taste. Very attractive to birds.

18 to 24 in.....\$0.35 ea. 2 to 3 ft.....\$0.50 ea.

LILAC, Common Purple. (Syringa Vulgaris.) 7 to 8 ft. The old-fashioned Lilac. Fragrant purple flowers in May. Hardy, tall-growing.

Each
 18 to 24 in..\$0.30
 2 to 3 ft.. .50
 3 to 4 ft.. .75
 4 to 5 ft.. 1.00
 5 to 6 ft.. 1.50
 5 to 6 ft. in clumps. 2.50
 (For Lilac hedging see page 14)

LILAC, Common White. (Syringa Vulgaris alba.) 7 to 8 ft. Similar in growth to the above. Flowers white.

Each
 18 to 24 in..\$0.30
 2 to 3 ft.. .50
 3 to 4 ft.. .75
 4 to 5 ft.. 1.00
 5 to 6 ft.. 1.50
 5 to 6 ft. in clumps. 2.50



The French Lilac, Ludwig Spaet is rich purple red in color

LILAC, Persian. (Syringa Persica.) 6 to 7 ft. A graceful Lilac. The branches are slender, leaves small size. The flowers are pale purple, fragrant and borne in large panicles.

18 to 24 in.....\$0.35 ea. 3 to 4 ft.....\$0.75 ea.
 2 to 3 ft..... .50 ea. 4 to 5 ft..... 1.00 ea.

LILAC, Rouen. (Syringa Rothomagensis.) 6 to 7 ft. An improvement in both color of flower and manner of growth on the common Persian Lilac. Flowers are larger and reddish purple in color, produced in profusion. A very graceful shrub.

18 to 24 in.....\$0.35 ea. 3 to 4 ft.....\$0.75 ea.
 2 to 3 ft..... .50 ea. 4 to 5 ft..... 1.00 ea.

LILAC, Villosa. (Syringa villosa.) Bushy shrub about eight feet high with stout branches. It has dark shining foliage which is very attractive. Flowers are silvery rose and produced after other lilacs are through blooming.

18 to 24 in.....\$0.35 ea. 3 to 4 ft.....\$0.75 ea.
 2 to 3 ft..... .50 ea. 4 to 5 ft..... 1.00 ea.

Lilac, French, Hybrid Varieties

THESE splendid Lilacs are far superior to the common varieties, blooming much more consistently, with a greater profusion of larger flowers. The plants seldom send out sprouts around the plants as the old purple and white kinds do. They generally bloom the first year after planting. Available in a wide choice of flower colors, they constitute a most valuable group of shrubs. No home yard should be without some of these Lilacs and they are equally valuable for park use. The following varieties are among the most hardy and very best Lilacs of this class.

18 to 24 in....\$0.50 ea.	4 to 5 ft.....\$1.25 ea.
2 to 3 ft.... .75 ea.	5 to 6 ft..... 1.75 ea.
3 to 4 ft.... 1.00 ea.	5 to 6 ft. clumps.. 2.50 ea.

ALFONSE LAVALLE. Double. Large flowers, clear lilac color. A general favorite.

CHAS. JOLY. The most choice of all double dark red lilacs. The bush is an upright grower of medium size, producing freely, large clusters of gorgeous flowers. We take pleasure in recommending this variety as being extra fine.

CHAS. X. Single. Flowers abundantly, deep reddish purple.

DOROTHY HAWKINS. Single. Deep reddish purple in large clusters. Excellent.

LUDWIG SPAETH. Single flowers. The red color a brilliant intense rich purple-red that holds up well in the sun and lasts a long time. Flower panicles are long and held erect well out from the foliage. It is a profuse bloomer commencing to bloom when only two feet high. A most wonderful lilac.

MADAME LEMOINE. Double. Profuse blooming, white flowers. The best double white.

MADAME PERIER. Double. Dwarf grower, flowers creamy white. A lovely lilac.

MARIE LEGRAYE. Single. Large panicles of white flowers. Begin to bloom when bush is only 18 to 24 inches high. The best single white variety.

PRESIDENT GREVY. The violet colored blossoms are immense in size and very double. The bush is the most vigorous of any of the French sorts.

PRINCESS ALEXANDRA. Single. Flowers very large, fine white.

MAPLE, Tatarian. (Acer Tataricum Ginnala.) 8 to 9 ft. A graceful shrub-like tree with handsome foliage which turns red in autumn. The brilliance of this coloring is unsurpassed.

2 to 3 ft. high....\$0.50	4 to 5 ft. high....\$1.00
3 to 4 ft. high.... .75	

OLIVE, Russian. (Elaeagnus Angustifolia.) 10 to 12 ft. A large-growing shrub with silvery white foliage. One of the best for planting in dry, exposed locations.

2 to 3 ft.....\$0.50 ea.	4 to 5 ft.....\$1.00 ea.
3 to 4 ft..... .75 ea.	

PLUM, Double Flowering. (Prunus Triloba.) 6 to 7 ft. A very choice shrub of medium height, bearing just before the leaves unfold, a profusion of delicate double pink colored rose-like flowers. Flowers resemble the flowering almond but the bush is hardier and more satisfactory. Many mistake this bush for the flowering almond. See cut below.

18 to 24 in.....\$0.35 ea.	3 to 4 ft.....\$0.75 ea.
2 to 3 ft..... .50 ea.	4 to 5 ft..... 1.00 ea.

PLUM, Purple-Leaved. (Newport.) 7 to 8 ft. Large-growing shrub or small tree with shining purple leaves which hold their color well during the summer, contrasting beautifully with the green tones of various other shrubs.

3 to 4 ft.....\$0.75 ea.	4 to 5 ft.....\$1.00 ea.
--------------------------	--------------------------

PRIVET, Lodense. 24 to 30 in. A new dwarf privet. Fine for window boxes and foundation planting.

12 to 18 in., bushy.....\$0.40 ea.

ROSE, Acacia. (Robinia Hispida.) 6 to 7 ft. Attractive shrub with pear-shaped, rose and lavender colored flowers. Covered with short bristles. Thrives in any soil.

2 to 3 ft.....\$0.75 ea.	3 to 4 ft.....\$1.00 ea.
--------------------------	--------------------------

The modern style in planting is to use plant materials to the fullest extent possible that they bring to your grounds the color, the beauty and the charm for which the modern place is noted.



HARDY HYBRID RUGOSA ROSES

THESE are especially valuable for growing in Minnesota on account of their hardiness. They need no winter protection. Rugosa Roses are erect growing, with spiny stems and have tough crinkled foliage of a healthy green. They bloom throughout the summer and fall. Particularly useful for planting in shrubbery or for hedges, along driveways, borders of properties and the like where the fragrant double flowers will be enjoyed by all. 3 to 4 ft. high.

PRICE, EXTRA LARGE, 18 to 24 inch, 75c EACH; 2 to 3 ft., \$1.00, EXCEPT WHERE NOTED. OFFERED IN THE FOLLOWING VARIETIES.

AGNES. The coppery yellow buds become amber gold upon opening. Produced freely, the blossoms are well shaped and sweetly fragrant. The only Rugosa which is truly yellow.

AMELIA GRAVEREAUX. The delightful flowers resemble the Tea Roses in their form and fragrance. They are double and rich, dark red in color. Blooms over a long period. Forms a nice vigorous bush.

BLANC DE COUBERT. With snow white blooms, double and fragrant, and arranged in large clusters. Blanc de Coubert is at its best during the summer and fall. Might be called a white Hansa, and like that variety is excellent for a hedge. Thrives in the coldest places and is the white "Eskimo Beauty." Especially pretty in half open bud.

CONRAD FERDINAND MEYER. An early flowering variety combining the ornamental quality of its Rugosa foliage with the blossom beauty and perfume of the Hybrid Perpetuals. Flowers large, cup-shaped and double; a delicate silvery-pink.

Hybrid Rugosa Roses—Continued Page 8

Double Flowering Plum
Pink flowers



ROSE HILL NURSERY

Hybrid Rugosa Roses—Continued

F. J. GROOTENDORST. The flowers are small, fringed, bright red. Produced freely throughout the growing season in large clusters. A strong-growing plant with strong, healthy foliage of splendid quality.

HANSA. This is the rose that attracts so much attention every summer. The best double red Rugosa Rose. The plant is a strong healthy grower with fine dark, rich green foliage. The flowers are of large size and are most attractive with their rich, deep red coloring, perfectly double and fragrant. See picture on next page.

18 to 24 in.....\$0.60 ea. 2 to 3 ft.....\$0.75 ea.
(For Hansa Rose hedging see page 14)

SIR THOMAS LIPTON. The snowy white flowers are double and produced freely through the summer and fall by this very strong plant.

MRS. ANTHONY WATERER. A new, large flowering double red Hybrid Rugosa. Blooms exceedingly fine almost continuously through the season. We offer 2 year old plants only.

ROSE RUGOSA, Single Red. One of the most ornamental single flowered roses. The flowers are large with golden center, color varying from a deep pink to bright red followed by attractive red fruit in the fall.

Hardy Bush Roses

IN addition to the Hardy Hybrid Rugosa Roses the following are dependable and hardy without covering. They are quite varied in their form and have a wide appeal to those interested in roses. They are useful for planting with shrubbery and for naturalizing on banks. The flowers are delightful and the bright red fruit is very attractive during the fall and early winter.

BLANDA. 3 to 4 ft. The canes are almost thornless and grow from three to five feet high. The soft, pink flowers measure two inches across and are borne in clusters. The bright red seed hips are attractive in winter. Desirable for covering banks and will grow in sandy or poor soil. Hardy everywhere.

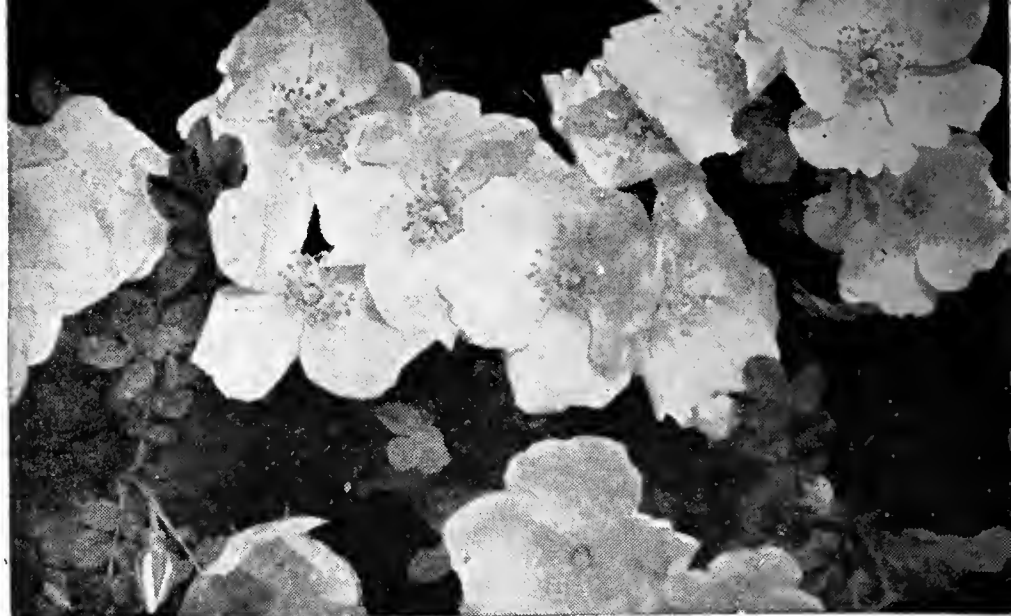
Strong plants, 12 to 18 in.....\$0.25 ea.
Strong plants, 18 to 24 in..... .35 ea.
Strong plants, 2 to 3 ft..... .50 ea.
Strong plants, 3 to 4 ft..... .75 ea.
Special prices per 100 quoted upon request.

HARRISON'S YELLOW. 4 to 5 ft. The soft yellow, semi-double fragrant flowers are borne during early June in great profusion and the foliage keeps bright and healthy-looking until late in the fall. The best semi-double yellow rose for this section.
Strong plants, 2 to 3 ft.....\$0.75 ea.

*Spirea, Ash-Leaved
Creamy white*



*Spirea, Billardi Rosea
Rose pink*



Rose, Hugonis, Clear Yellow Flowers

HUGONIS. 4 to 5 ft. A yellow rose producing single flowers in great profusion early in the spring. The bush develops into a beautiful plant and retains its foliage throughout the late fall. The refined foliage is beautiful the entire growing season and the graceful growth of the bush makes it one of the most desirable plants for shrub plantings. It is very hardy and is destined to become one of the most popular of the bush roses. See picture top of page.

18 to 24 in.....\$0.40 ea.
2 to 3 ft..... .60 ea.
3 to 4 ft..... .85 ea.

LUCIDA. 4 to 5 ft. This dense-growing handsome shrub has healthy bright green foliage. The single flowers are pink followed by shining red fruit which is attractive. Desirable for covering banks or in the shrub border.

12 to 18 in.....\$0.25 ea.
18 to 24 in..... .35 ea.
2 to 3 ft..... .50 ea.

RED-LEAVED ROSE. (Rubrifolia.) 4 to 5 ft. The intensely pink single flowers are borne in abundance upon upright stems with crimson foliage. The foliage remains red throughout the entire summer giving the bush a very attractive appearance from early spring when the first red leaves appear until late winter when the red fruit disappears. A fine bush to plant with other shrubs.

12 to 18 in. plants.....\$0.25 ea.
18 to 24 in. plants..... .40 ea.
2 to 3 ft. plants..... .60 ea.
3 to 4 ft. plants..... .75 ea.

SWEETBRIER ROSE. (Rubiginosa.) 4 to 5 ft. A desirable rose of vigorous habit. Fine for covering banks or massing in the shrubbery border. The aromatic scent exhaled from the bright green foliage is delightful. Flowers are single pink.

18 to 24 in.....\$0.40 ea.
2 to 3 ft..... .50 ea.
3 to 4 ft..... .75 ea.

SNOWBALL. (Viburnum Opulus Sterilis.) 7 to 8 ft. A well known shrub attaining a height of 8 to 10 feet. Flowers pure white in round clusters about the first of June. An old favorite. See picture.

18 to 24 in.....\$0.35 ea.
2 to 3 ft..... .50 ea.
3 to 4 ft..... .75 ea.

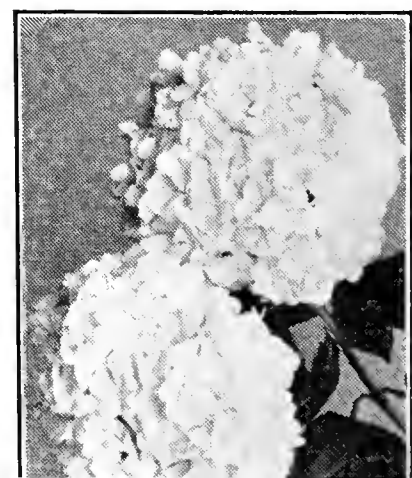
SNOWBERRY, Red or Indian Currant. (Symphoricarpus Vulgaris.) 3 to 4 ft. Of low-growing, graceful habit. Numerous small pink flowers followed by interesting coral colored berries.

18 to 24 in.....\$0.35 ea.
2 to 3 ft..... .50 ea.

*White Snowberry
Pure white berries*



*Snowball
White flowers*



MINNEAPOLIS AND SAINT PAUL



Hansa Rugosa Rose
Rich deep red flowers

SNOWBERRY, White. (*Symphoricarpus Racemosus.*) 3 to 4 ft. A rather low-growing shrub with small pink flowers followed by a mass of very attractive white berries which cling late in the fall. Will grow well in sun or partial shade. See picture, page 8.

18 to 24 in.....\$0.35 ea.
2 to 3 ft..... .50 ea.

SPIREA, Anthony Waterer. 2 to 2½ ft. Flowers a bright crimson commencing to bloom in June and continuing throughout the summer. A valuable low-growing shrub producing an abundance of showy flowers. See picture below.

12 to 18 in.....\$0.35 ea.
18 to 24 in..... .50 ea.



Syringa, Virginal
Double, creamy white flowers

STYLES CHANGE IN PLANTING TOO



THE OLD WAY



THE NEW WAY

SPIREA, Arguta. 3 to 4 ft. A very graceful early flowering shrub blooming with white flowers before the Bridal Wreath. Slender arching branches clothed with feathery green leaves. See picture below.

18 to 24 in.....\$0.35 ea.
2 to 3 ft..... .50 ea.

SPIREA, Snow Garland. 3 to 4 ft. Flowers resemble the Arguta and bloom about the same time. Snow Garland is more graceful and more bushy. Combines nicely with Bridal Wreath to prolong blooming season.

18 to 24 in.....\$0.35 ea.
2 to 3 ft..... .50 ea.
3 to 4 ft..... .75 ea.

SPIREA, Ash Leaved. (*Sorbaria Sorbifolia.*) 4 to 5 ft. Has long, feathery panicles of white flowers in July. Leaves resemble those of the Mountain Ash. Starts growth very early in spring. A thrifty grower, suitable for either sunny or shady locations. See picture on page 8.

18 to 24 in.....\$0.35 ea.
2 to 3 ft..... .50 ea.
3 to 4 ft..... .75 ea.

SPIREA, Billardi Rosea. 4 to 5 ft. Flowers spike shaped, rose pink in color. Starts blooming in late June and continues through August. See picture on page 8.

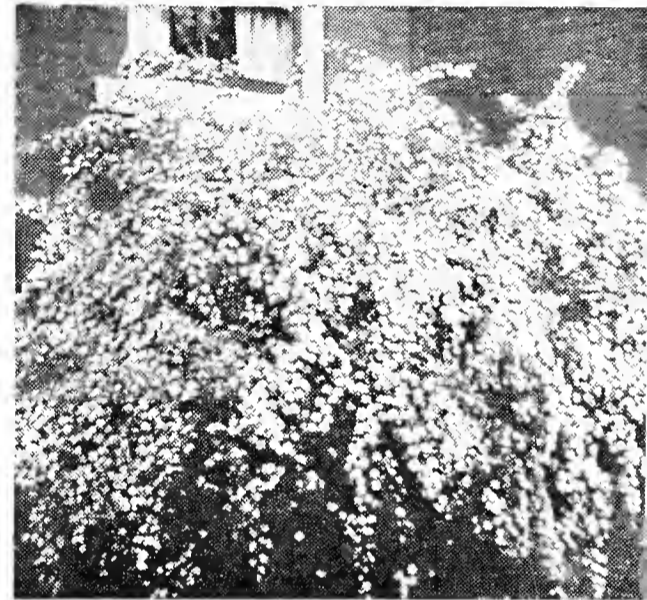
18 to 24 in.....\$0.35 ea.
2 to 3 ft..... .50 ea.
3 to 4 ft..... .75 ea.

SPIREA, Bridal Wreath. (*Spiraea Van Houttei.*) 5 to 6 ft. A great favorite. White flowers produced so freely along the gracefully drooping stems that the foliage can hardly be seen. Very hardy, will grow in partial shade.

2 to 3 ft.....\$0.25 ea.
3 to 4 ft..... .35 ea.
4 to 5 ft..... .60 ea.

SPIREA, Froebeli. 2 to 3 ft. Flowers bright rosy-red in flat clusters, produced during July and August. Foliage purple red in early spring and again in the fall. A desirable low-growing shrub.

12 to 18 in.....\$0.35 ea.
18 to 24 in..... .50 ea.



Spirea, Bridal Wreath
Graceful racemes of white flowers

Spirea, Anthony Waterer
Bright crimson



Spirea, Arguta
Its white flowers are in bloom before the Bridal Wreath





Tamarix Amurensis
Flowers, pink in airy racemes

SUMACH, Smooth. (Rhus glabra.) 5 to 6 ft. A large-growing native shrub well adapted for covering unsightly banks. The attractive foliage turns a bright, fiery red in autumn.

2 to 3 ft.....\$0.40 ea. 3 to 4 ft.....\$0.60 ea.

SYRINGA, Dwarf Golden-Leaved. (Philadelphus aureus.) 3 to 4 ft. A compact dwarf shrub with bright yellow leaves and white flowers. Very effective as a foliage plant.

12 to 18 in..... \$0.60 ea. 18 to 24 in.....\$0.85 ea.

SYRINGA, Large Flowered. (Philadelphus grandiflorus.) 8 to 9 ft. A large and vigorous growing shrub, producing a great wealth of creamy white blossoms of unusual size.

18 to 24 in.....\$0.35 ea. 3 to 4 ft.....\$0.75 ea.
2 to 3 ft..... .50 ea. 4 to 5 ft..... 1.00 ea.

SYRINGA, Lemoine. (Philadelphus Lemoinei.) 4 to 5 ft. A splendid free-flowering variety with slender upright branches. Flowers creamy white and very fragrant.

18 to 24 in.....\$0.40 ea. 3 to 4 ft.....\$0.85 ea.
2 to 3 ft..... .60 ea.

SYRINGA, Sweet-Scented Mock Orange. (Philadelphus coronarius.) 7 to 8 ft. A vigorous growing shrub with sweet-scented white flowers in the greatest profusion about the middle of June.

18 to 24 in.....\$0.35 ea. 3 to 4 ft.....\$0.75 ea.
2 to 3 ft..... .50 ea.

SYRINGA, Virginal. (Philadelphus virginalis.) 7 to 8 ft. A magnificent new variety, growing moderately tall with good foliage and compact habit. The sweetly fragrant, large, double, creamy white flowers are magnificent. See picture on page 9.

18 to 24 in.....\$0.50 ea. 3 to 4 ft.....\$0.85 ea.
2 to 3 ft..... .60 ea.

TAMARIX. (Tamarix amurensis.) 5 to 6 ft. A very unusual appearing shrub. Foliage feathery blue-green in color, flowers pink in long, airy, graceful racemes. Very attractive. See picture.

18 to 24 in.....\$0.35 ea. 3 to 4 ft.....\$0.75 ea.
2 to 3 ft..... .50 ea.

WAYFARING TREE. (Viburnum lantana.) 6 to 7 ft. Large, attractive, robust shrub, with soft heavy leaves and clusters of white flowers. The red fruit is attractive to birds.

2 to 3 ft.....\$0.60 ea. 3 to 4 ft.....\$0.85 ea.

WEIGELA, Eva Rathke. 3 to 4 ft. A remarkably free bloomer, flowering continuously throughout the summer. Flowers a rich ruby carmine color. Needs winter protection.

2 to 3 ft.....\$0.75 ea.

WEIGELA, Rosea. 3 to 4 ft. Rose colored trumpet shaped flowers in late June are produced very freely. Needs winter protection.

2 to 3 ft.....\$0.75 ea.

SPIREA, Gold-Leaved. (Spiraea Opulifolia Aurea.)

7 to 8 ft. The golden green colored leaves are most attractive when used with other shrubs. White flowers in clusters about the middle of June. Large growing.

2 to 3 ft.....\$0.50 ea. 3 to 4 ft.....\$0.75 ea.

SPIREA, Ninebark or Snowball-Leaved. (Spiraea Opulifolia.) 7 to 8 ft. Vigorous growing. Large white flowers, seed pods turning bright red in summer. Makes a good screen.

2 to 3 ft.....\$0.50 ea. 3 to 4 ft. \$0.75 ea.

SPIREA, Dwarf Ninebark. (Spiraea Opulifolia Nana.)

3 to 4 ft. A compact semi-dwarf shrub with very attractive foliage. The white flowers of June are followed by numerous small red pods.

18 to 24 in.....\$0.50 ea. 2 to 3 ft.....\$0.75 ea.

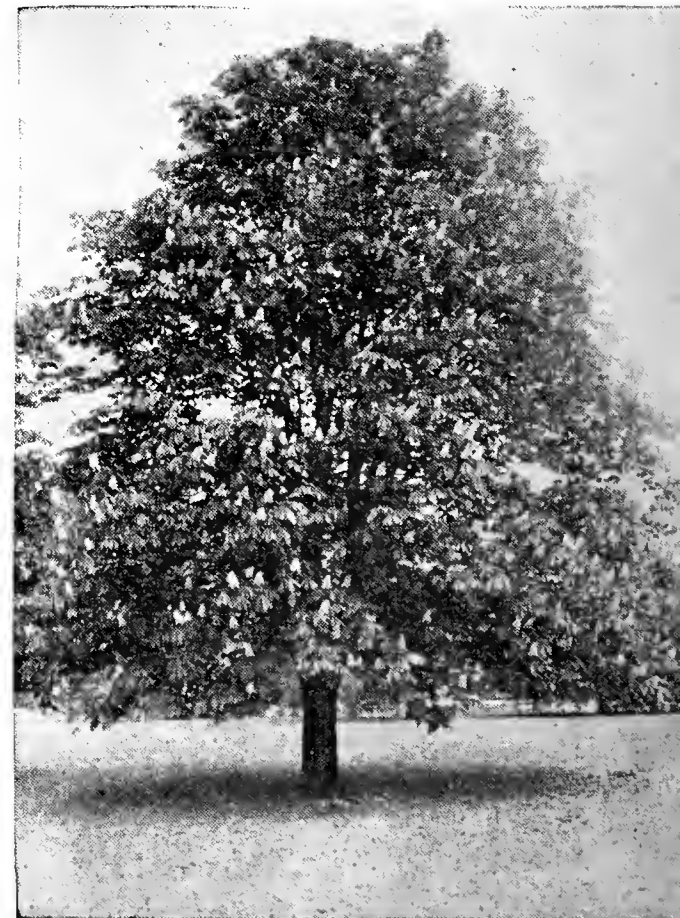
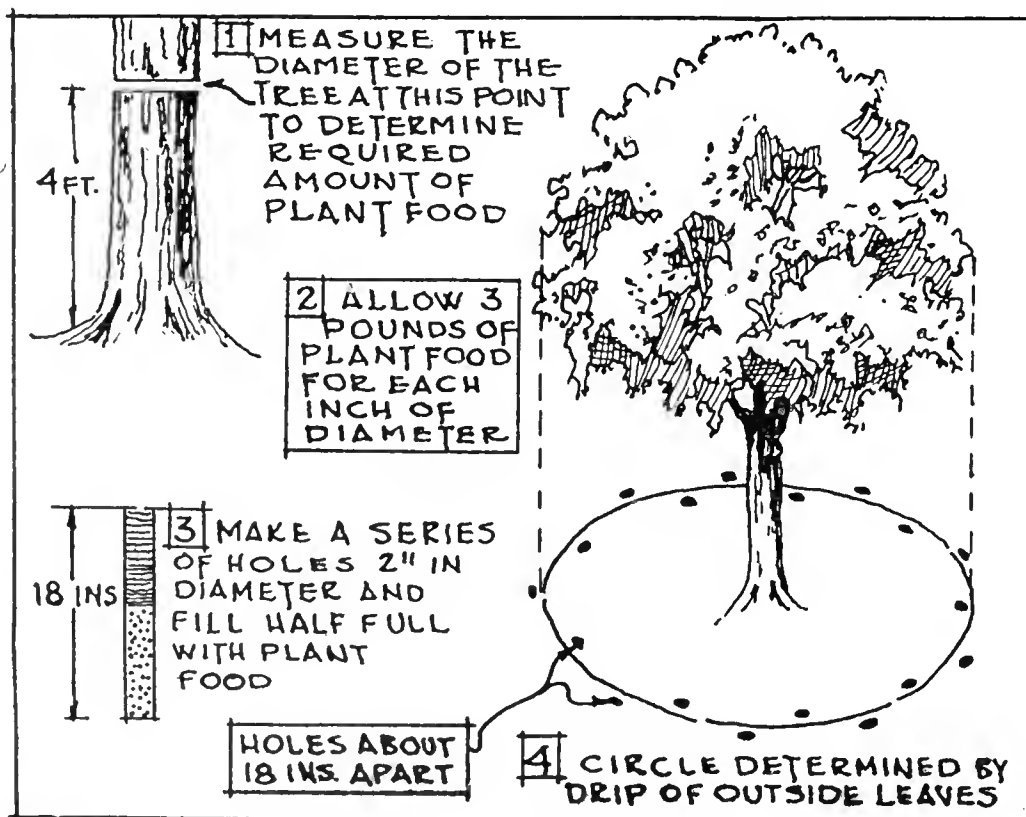
SUMACH, Cut-Leaved. (Rhus typhina laciniata.) 5 to 6 ft. The lace-like graceful leaves of a pleasing green are very attractive, but especially so when they turn in autumn to varied hues of crimson and gold.

2 to 3 ft.....\$0.50 ea. 3 to 4 ft. \$0.75 ea.

FEED YOUR TREES TO KEEP THEM HEALTHY

Follow the directions in the diagram below, using Rose Hill Fertilizer and your trees will respond remarkably to this feeding.

Please see page one for prices on Rose Hill Fertilizer.



Horse Chestnut—Ohio Buckeye

TREES

FOR SHADE AND BEAUTY

At Small Expense You Can Plant a Tree That Will Grow Into Priceless Value

NOTE—Shade and ornamental trees are usually too large for parcel post and can be shipped freight or express to better advantage.

ASH, White. (Fraxinus Americana.) A tall-growing native tree. Comparatively free from insect pests and a clean tree. It is very desirable for use as a lawn specimen or for the boulevard. See picture below.

4 to 5 ft. high.....	\$0.50	1½ in. diameter.....	\$2.50
5 to 6 ft. high.....	.75	2 in. diameter.....	3.00
6 to 8 ft. high.....	1.00	2½ in. diameter.....	3.50
8 to 10 ft. high.....	1.50	3 in. diameter.....	5.00

BASSWOOD or AMERICAN LINDEN. (Tilia Americana.) A state-native tree with large, heart-shaped leaves and fragrant white blossoms. Splendid for lawn or boulevard planting.

5 to 6 ft. high.....	\$0.75	1½ in. diameter.....	\$2.50
6 to 8 ft. high.....	1.00	2 in. diameter.....	3.00
8 to 10 ft. high.....	1.50	2½ in. diameter.....	4.00
		3 in. diameter.....	5.50

BIRCH, Canoe, White or Paper. (Betula Papyrifera.)

A desirable graceful tree with slender branches and silvery white bark. Especially effective when planted among or near evergreens.

4 to 5 ft. high....	\$1.00	1½ in. diameter....	\$3.50
5 to 6 ft. high....	1.25	Clumps, having 2 or	
6 to 8 ft. high....	1.75	more stems, 7 to	
8 to 10 ft. high....	2.50	8 ft.....	3.00

BIRCH, Cut Leaf Weeping. (Betula Alba Laciniata Pendula.)

Silvery white bark, a graceful drooping habit of growth. Leaves very fine and deeply cut. An excellent ornamental tree. See picture bottom of page. Please note that the smaller sizes in Cut Leaf Birch are offered without being balled and burlapped. The larger sizes cannot be transplanted safely without balling. We are therefore offering these sizes dug with a ball of earth.

Not Balled		Balled and Burlapped Very choice trees	
5 to 6 ft. high....	\$2.50	1½ in. diameter..	\$7.50
6 to 8 ft. high....	3.25	2 in. diameter..	9.00
8 to 10 ft. high....	4.25		

BUTTERNUT. (Juglans cinerea.) A native tree of medium size. Foliage green, bark gray. Edible nuts.

4 to 5 ft. high....	\$1.00	2½ in. diameter....	\$6.00
5 to 6 ft. high....	1.50	3 in. diameter....	8.00
2 in. diameter....	4.50		

CATALPA, Hardy. (Catalpa Speciosa.) Showy fragrant flowers in large panicles. Very large heart-shaped leaves. A decorative lawn tree.

6 to 8 ft. high....	\$1.25	8 to 10 ft. high....	\$2.00
---------------------	--------	----------------------	--------

CHERRY, Choke. (Prunus Virginiana.) 10 to 12 ft. A large, handsome bush, or small tree, bearing

strong scented white flowers in May. Dark red, pea sized fruit appears in July and August.

18 to 24 in.....	\$0.35 ea.	4 to 5 ft.....	\$1.00 ea.
2 to 3 ft.....	.50 ea.	5 to 6 ft.....	1.25 ea.
3 to 4 ft.....	.75 ea.		

CHERRY, European Bird or May Day Tree. (Prunus Padus.) 8 to 10 ft. One of earliest plants to leaf out in spring. The drooping racemes of white, very fragrant flowers literally cover the tree in early May. followed later by shining black berries which are attractive to birds.

2 to 3 ft.....	\$0.50 ea.	3 to 4 ft.....	\$0.75 ea.
----------------	------------	----------------	------------

CHERRY, Pin. (Prunus Pennsylvanica.) 8 to 9 ft. The slender, red-barked branches are covered with small white flowers which appear at the same time as the light green leaves. The light cherry-red fruit is about the size of a pea. This is an interesting ornamental tree.

2 to 3 ft.....	\$0.50 ea.	6 to 8 ft.....	\$2.00 ea.
3 to 4 ft.....	.75 ea.	8 to 10 ft.....	2.50 ea.
5 to 6 ft.....	1.50 ea.		

CRAB, Bechtel's Double Flowering. (Malus Ioensis.) A small tree with very lovely, double, fragrant, rose-like pink flowers. Splendid small tree for the lawn or when planted in the shrub border.

2 to 3 ft. high....	\$0.75	4 to 5 ft. high....	\$2.00
3 to 4 ft. high....	1.25		

CRAB, Dolgo. A highly ornamental tree. The tree not only serves as a handsome lawn specimen but produces beautiful bright red fruit of fine quality which makes a red colored jelly of excellent flavor. Prices on specimen trees as follows:

4 to 5 ft. high....	\$1.25	6 to 7 ft. high....	\$2.50
5 to 6 ft. high....	1.75		



American Elm

Birch, Cut Leaf Weeping

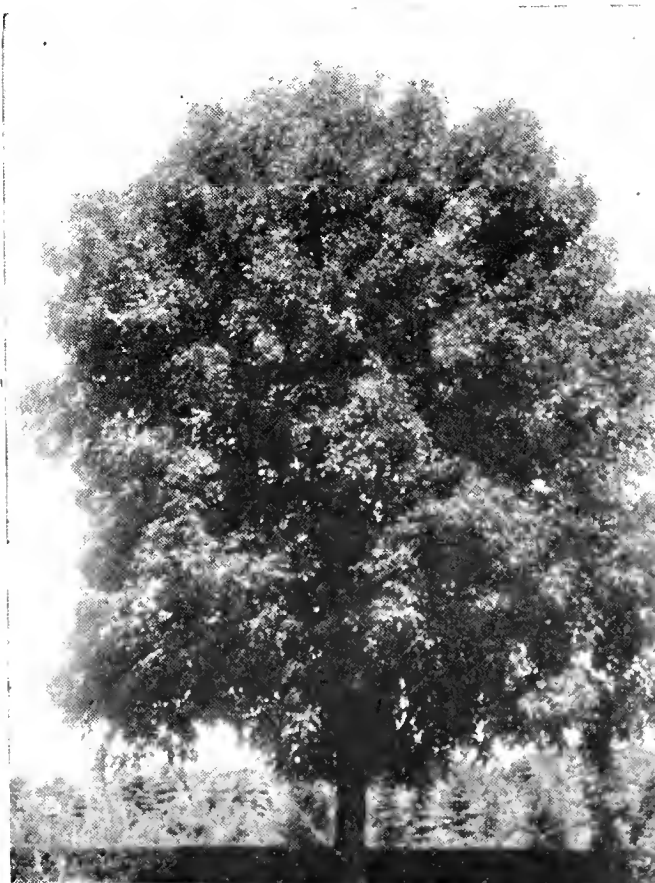


LARGE TREES FOR IMMEDIATE SHADE AND ORNAMENT

At the prices quoted below we offer to supply and plant locally, native Hard Maple, American Elm and Ash trees dug with a large ball of soil. The size given in inches indicates the diameter of the trunk of the tree one foot above the ground.

5 in. diameter.....	\$ 35.00
6 in. diameter.....	50.00
7 in. diameter.....	60.00
8 in. diameter.....	70.00
9 in. diameter.....	86.00
10 in. diameter.....	95.00
11 in. diameter.....	115.00
12 in. diameter.....	125.00

White Ash





Chinese Elm

ELM, American. (Ulmus Americana.) This majestic tree is noted for its graceful beauty. It is perfectly hardy and of comparatively rapid growth. It is one of the most largely used trees for street planting and as a shade tree for lawns and parks. A very fine tree in every respect.

3 to 4 ft. high.....	\$0.25	1½ in. diameter.....	\$2.00
4 to 5 ft. high.....	.35	2 in. diameter.....	2.50
5 to 6 ft. high.....	.50	2½ in. diameter.....	3.50
6 to 8 ft. high.....	.75	3 in. diameter.....	5.00
8 to 10 ft. high.....	1.00	3½ in. diameter.....	8.00
		4 in. diameter.....	12.00

For Windbreak or Woodlot

6 to 8 ft. high.....	\$10.00 per 25	Per 100.....	\$30.00
8 to 10 ft. high.....	15.00 per 25	Per 100.....	45.00

ELM, Chinese. (Ulmus Parvifolia.) A fast-growing, graceful, small-leaved tree with a bushy head. This recent introduction is very hardy, thriving under dry conditions. It will thrive in sandy or poor soil where most other trees fail. For a windbreak on the prairie or where a dense screen is desired this tree has no equal. A very desirable tree for the lawn. See picture.

3 to 4 ft. high.....	\$0.25	1½ in. diameter.....	\$2.00
4 to 5 ft. high.....	.35	2 in. diameter.....	2.50
5 to 6 ft. high.....	.50	2½ in. diameter.....	3.50
6 to 8 ft. high.....	.75	3 in. diameter.....	5.00
8 to 10 ft. high.....	1.00	3½ to 4 in. diameter.....	7.00

For Windbreak or Woodlot

12 in. to 18 in. Seedlings	\$0.25	Per 10	Per 100
18 in. to 24 in. Seedlings40		2.50
2 ft. to 3 ft. Seedlings75		5.00

ELM, Lake City. The outstanding characteristic of the Lake City Elm is its upright manner of growth, which develops a conical shaped tree. The foliage is a dark glossy green and of large size. The branches are strong and the tree makes unusually fast growth. The extreme variations of the American Elm is avoided when the Lake City Elm is used.

1½ in. diam.....	\$2.50	2½ in. diam.....	\$5.00
2 in. diam.....	3.50		

ELM, Moline. A valuable new type of tree propagated by budding. Of compact but fast-growing habit, with very large leaves of distinct dark blue-green shade.

6 to 8 ft. high....	\$1.00	1½ in. diam.....	\$2.00
8 to 10 ft. high....	1.25		

HACKBERRY. (Celtis Occidentalis.) A hardy, native tree. The leaves resemble the Elm and the bark is very thick and rough. A handsome broad spreading tree. Brownish black berries in the fall.

5 to 6 ft. high...\$0.75	1½ in. diam.....	\$2.50
6 to 8 ft. high... 1.00	2 in. diam.....	3.00
8 to 10 ft. high... 1.50	2½ in. diam.....	4.00
	3 in. diam.....	5.50

HORSECHESTNUT, Ohio Buckeye. (Aesculus Glabra.) In May it is covered with erect spikes of white flowers and later bears large mahogany-colored nuts. A desirable tree for an ornamental lawn specimen. See picture page 10.

3 to 4 ft. high....\$1.50	1½ in. diam.....	\$8.00
4 to 5 ft. high.... 2.00	2 in. diam.....	10.00
5 to 6 ft. high.... 3.00	2½ in. diam.....	15.00
6 to 8 ft. high.... 5.00	3 in. diam.....	18.00

LOCUST, Common or Black Locust. (Robinia Pseudacacia.) Fragrant white flowers in drooping racemes. Pods brown with many seeds. Valuable for ornamental plantings.

6 to 8 ft. high.....	\$1.50	8 to 10 ft. high.....	\$2.00
----------------------	--------	-----------------------	--------

MAPLE, Norway. (Acer Plantanoides.) A large, handsome tree with round spreading head. The broad leaves of dark green color cast a dense shade and turn pale yellow in the autumn. Fine ornamental shade tree.

6 to 8 ft. high.....	\$2.00	1½ inch diameter.....	\$4.00
8 to 10 ft. high.....	3.00	2 inch diameter.....	5.00

MAPLE, Schwedler's. (Acer Platanoides Schwedleri.) One of our most ornamental shade trees. The foliage, dark red in the spring, gradually turns to green later in the season. The leaf coloring of this tree makes it one of the most desirable of our shade trees.

5 to 6 ft. high.....	\$2.50 ea.	1½ to 2 in. diam.....	\$5.00
6 to 8 ft. high.....	3.00	2 in. diam.....	7.00
8 to 10 ft. high.....	4.00	2½ in. diam.....	8.50

MAPLE, Silver or Soft. (Acer Dasycarpum.) A rapid-growing hardy tree. The foliage and branches of the tree are clean-looking and attractive. A very good tree where fast growth is essential.

5 to 6 ft. high.....	\$0.75	1½ in. diam.....	\$2.00
6 to 8 ft. high.....	1.00	2 in. diam.....	2.50
8 to 10 ft. high.....	1.25	2½ in. diam.....	3.50
		3 in. diam.....	5.00

MAPLE, Sugar or Hard. (Acer Saccharum.) A large tree of stately beauty. The ascending branches attain a symmetrical oval head. Bark light brown-gray. Leaves smooth, varying from a bright light green to deep green above, coloring beautifully in the fall.

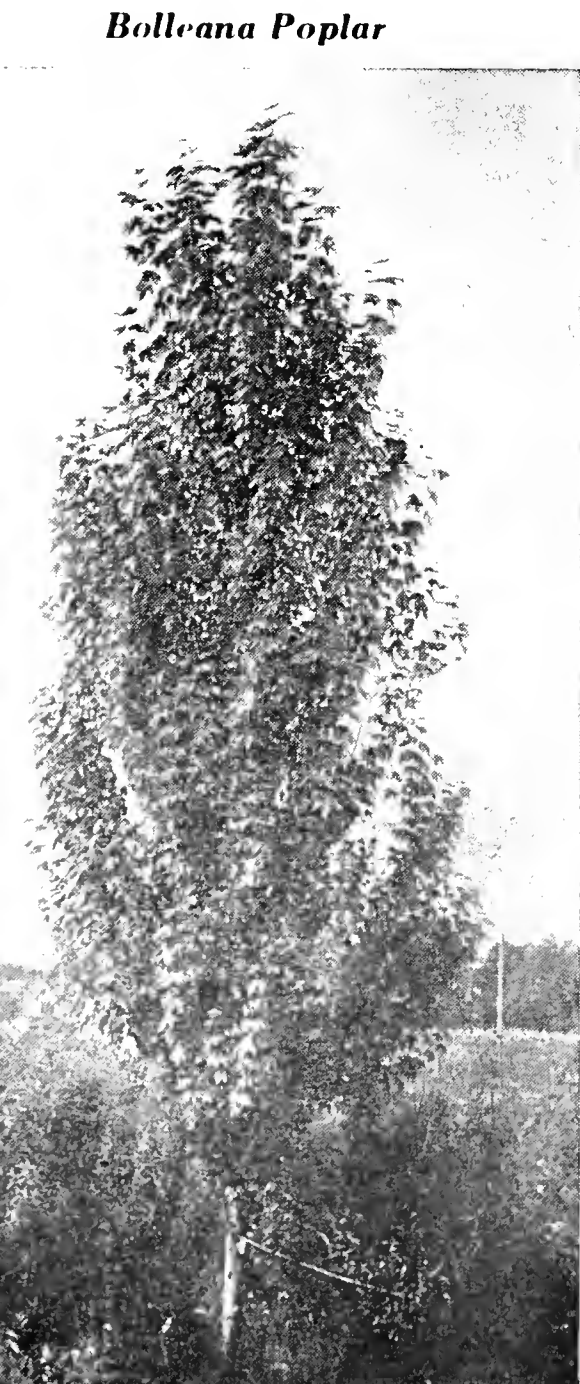
6 to 8 ft. high.....	\$2.00 ea.	2 in. diam.	\$5.00
8 to 10 ft. high.....	3.00	2¼ in. to 2½ in. diam.....	6.00
1½ in. diam.....	4.00		

MAPLE, Tatarian. (Acer Tataricum Ginnala.) A graceful shrub-like tree with handsome foliage which turns to bright red in autumn. The brilliance of this coloring is unsurpassed.

2 to 3 ft. high.....	\$0.40	4 to 5 ft. high.....	\$1.00
3 to 4 ft. high.....	.75		

MAPLE, Wier's Cut-Leaved. (Acer Dasycarpum Wierii.) A weeping form of the maple. The branches are slender and drooping, presenting a most interesting, attractive and graceful appearance.

6 to 8 ft. high.....	\$1.75	8 to 10 ft. high.....	\$2.50
----------------------	--------	-----------------------	--------



Bolleana Poplar

MINNEAPOLIS AND SAINT PAUL

MOUNTAIN ASH, European. (Sorbus Aucuparia.) This tree thrives well in our cold climate. In form it is round headed. White flowers in May. The fruit which clings for a long time is orange-red in color, and is attractive to birds.

4 to 5 ft. high.....	\$1.00	1½ in. diam.....	\$3.00
5 to 6 ft. high.....	1.50	2 in. diam.....	3.50
6 to 8 ft. high.....	2.00	2½ in. diam.....	4.50
8 to 10 ft. high.....	2.50	Clumps, 2 to 4 stems, 6 to 8 ft.....	3.00

MOUNTAIN ASH, Oak-Leaved. (Sorbus Quercifolia.) The upright branches of this tree form a pyramidal head. The leaves are shaped similar to those of the Oak. White flowers are followed by orange-crimson berries. A splendid variety for lawn plantings.

1½ to 1¾ in. diam.....	\$3.00	2 in. diam.....	\$5.00
------------------------	--------	-----------------	--------

MOUNTAIN ASH, Weeping. (Sorbus Aucuparia Pendula.) The best tree of the extremely pendulous type for the north. The fruit and flowers are identical with the European Mountain Ash.

6 to 7 ft., 2 years' head.....	\$3.00
--------------------------------	--------

MULBERRY, Russian. (Morus Alba Tatarica.) A low-growing, very bushy topped small tree. Leaves small and many-lobed. The edible fruit is sweet and resembles a black-berry. Attractive to the birds.

5 to 6 ft. high.....	\$1.50	6 to 8 ft. high.....	\$2.00
----------------------	--------	----------------------	--------

PLUM, Purple-Leaved. (Newport.) Highly decorative small tree. See page 7.

POPLAR, Bolleana. (Populus Bolleana.) Of erect, columnar form. The leaves are dark green on the upper surface and white beneath. The bark is silvery gray. Very showy in appearance. See picture on page 12.

4 to 5 ft. high.....	\$0.75	1½ in. diam.....	\$2.50
5 to 6 ft. high.....	1.00	2 in. diam.....	3.50
6 to 8 ft. high.....	1.25	2½ in. diam.....	5.00
8 to 10 ft. high.....	1.85		

POPLAR, Carolina. (Populus Eugene.) Of extremely rapid growth. The branches form an upright, somewhat pyramidal head. The foliage is large, thickly borne, bright and glossy. Will grow in almost any soil.

5 to 6 ft. high....	\$0.50	1½ in. diam.....	\$2.00
6 to 8 ft. high....	.75	2 in. diam.....	2.50
8 to 10 ft. high....	1.00	2½ in. diam.....	3.00

POPLAR, Lombardy. (Populus Fastigiata.) Unique and conspicuous on account of its erect, columnar form. A rapid-growing tree of clean habit. Striking and picturesque when grouped with other trees. Fine for a tall screen. See picture, top of page.

5 to 6 ft. high....	\$0.50	1½ in. diam.....	\$2.00
6 to 8 ft. high....	.75	2 in. diam.....	2.50
8 to 10 ft. high....	1.25		

POPLAR, Norway. A hardy rapid-growing tree. Resembles the Carolina Poplar.

5 to 6 ft. high....	\$0.50	2 in. diam.....	\$2.50
6 to 8 ft. high....	.75	2½ in. diam.....	3.00
8 to 10 ft. high....	1.00	3 in. diam.....	4.00
1½ in. diam.....	2.00		

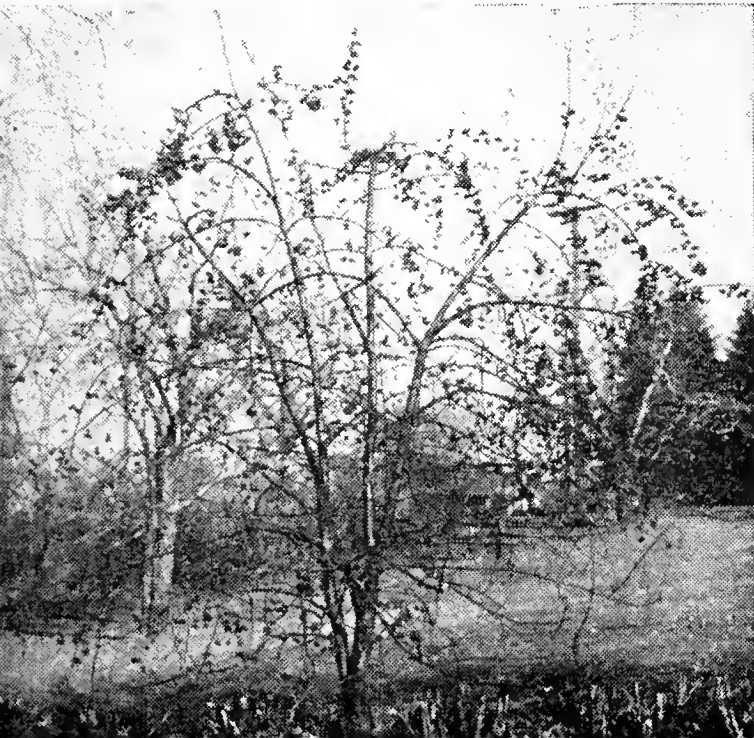
POPLAR, Simon. (Populus Simonii.) This is an upright tree with a narrow straight top. Leaves thick and firm. It is a desirable tree for occasional plantings. A very rapid grower and useful where a quick-growing screen is wanted.

2 in. diameter.....	\$2.50
---------------------	--------

WALNUT, Black. (Juglans Nigra.) A majestic native tree. Leaves are bright yellow green turning yellow in autumn. The nut is almost round, the meat of which is sweet, richly flavored and oily.

4 to 5 ft. high....	\$1.00	8 to 10 ft. high....	\$3.00
5 to 6 ft. high....	1.25	2 in. diam.....	5.00
6 to 8 ft. high....	2.00		

Flame Crab
The brilliant red fruit clings until midwinter. Photo taken Jan. 18th



WILLOW, Wisconsin Weeping. (Salix Dolorosa.) The best suited Weeping Willow for this section on account of its hardiness. Quick-growing and of clean habit. It is a desirable tree.

4 to 5 ft. high	\$0.50
5 to 6 ft. high	.75
6 to 8 ft. high	1.50
8 to 10 ft. high	2.00
1½ in. diam...	2.50
2 in. diam...	3.00

WILLOW, Golden. (Salix Vitellina Aurea.) A rapid-growing large tree. The bright golden-yellow bark offers a pleasing contrast wherever used, and is very ornamental.

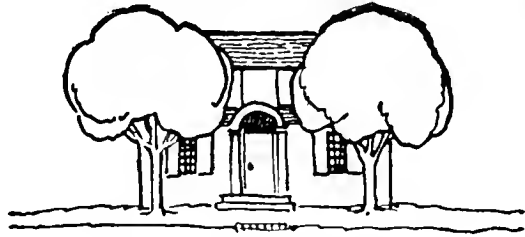
6 to 8 ft. high.	\$1.50
8 to 10 ft. high.	2.00

WILLOW, Niobe. (Salix Vitellina.) (Niobe.) A beautiful weeping tree with golden bark. The graceful drooping branches are ornamental both summer and winter.

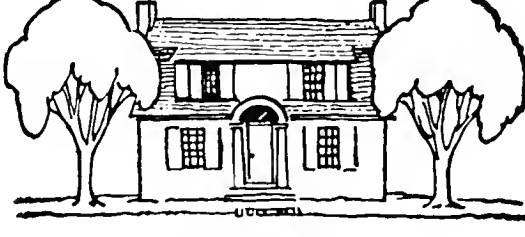
4 to 5 ft. high	\$0.50
5 to 6 ft. high	.75
6 to 8 ft. high	1.50
8 to 10 ft. high	2.00
1½ in. diam...	2.50
2 in. diam...	3.00



Lombardy Poplar



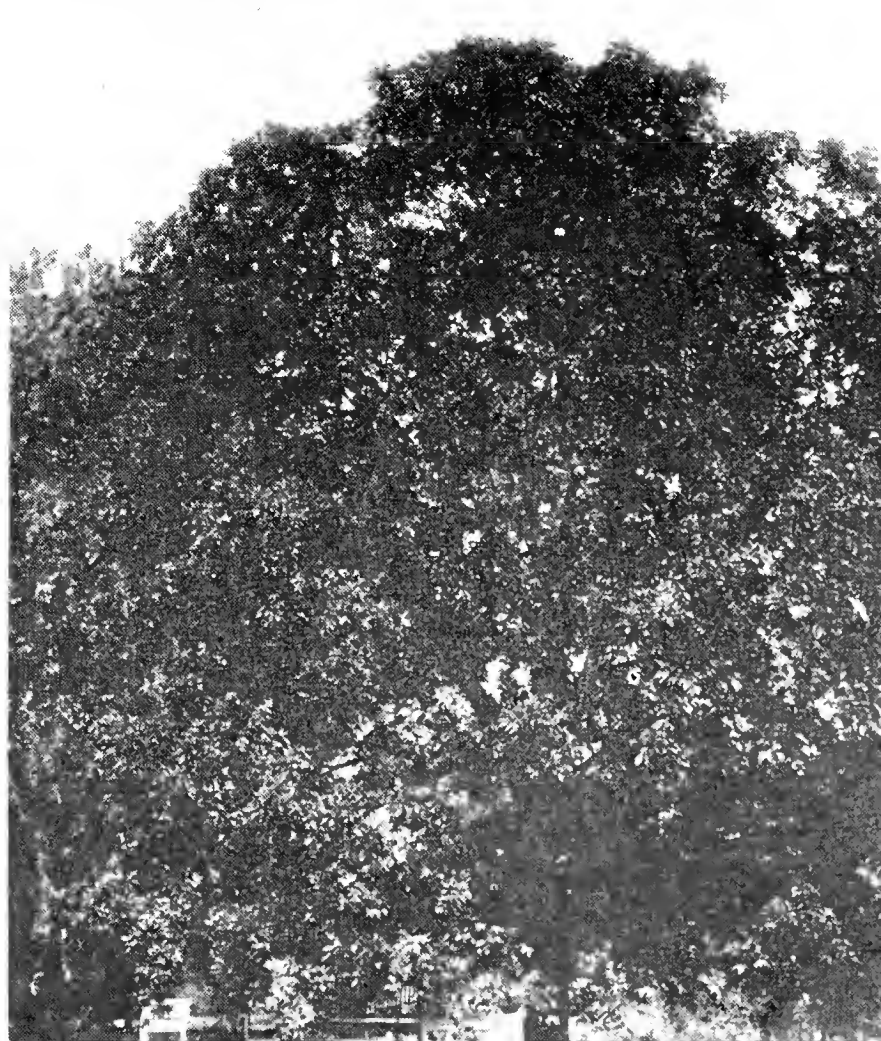
WRONG



RIGHT

Plant trees to frame the view of your house (right) and not to screen it out (wrong). It will look better.

A Horsechestnut (Ohio Buckeye) near Rose Hill Nursery Office



HEDGES

Beautiful Borders of Living Green



Cotoneaster Hedge—The clean-appearing, glossy leaves and robust growth make this hedge a favorite.

THE cheapest wall or fence and the best is the living hedge. It does not need to be painted as it gives itself a new coat every year. A hedge will effectively screen out undesirable views or shut out trespassers. Plant a hedge where you need a fence. Listed below you will find hedge plants suited for all purposes and locations. Our plants are grown in the open nursery rows where they have been given ample room for both root and top development.

PLANTING THE HEDGE

We recommend planting Buckthorn, Cotoneaster and Caragana in two rows, each row 8 inches apart and the plants placed 12 inches apart in each row, staggered.

For a narrow hedge, the plants may be planted eight inches apart in a single row.

The remainder of the plants listed on this page should be planted one foot apart in a single row.

Do not fail to trim every plant immediately after planting to at least one-half its original size. Leaving only the lower one-fourth would be still better. The secret of securing a dense hedge is to cause the plants to branch out near the ground by trimming as advised above.

POSTAGE

If shipment is wanted by parcel post please add for postage and packing. Figure average weight for 100 hedge plants as follows: 12 to 18 in. sizes, 22 lbs.; 18 to 24 in., 30 lbs.; 2 to 3 ft., 50 lbs.; 3 to 4 ft., 70 lbs.

See parcel post rates on page 33.

HEDGE PLANTING CHARGES

A planting charge of fifteen cents per foot is charged for planting all varieties and sizes of hedge plants.

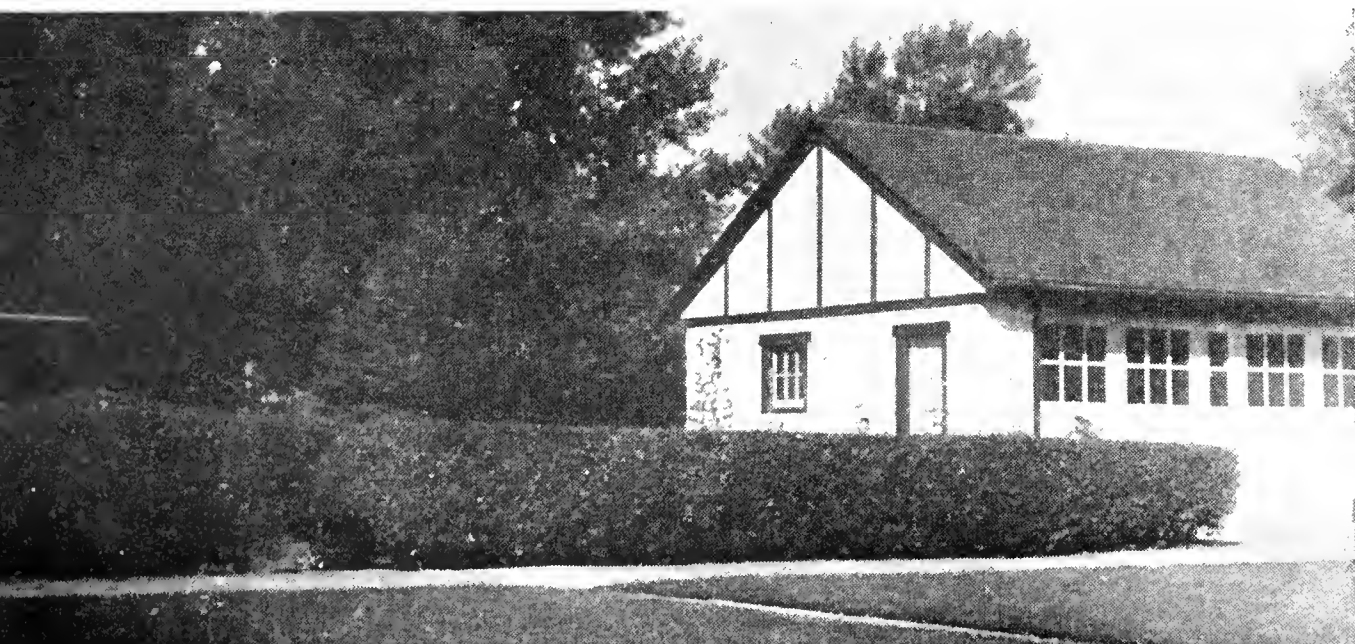
PLEASE NOTE—25 or more plants are sold at the 100 rate.

BARBERRY, Japanese or Thunberg's. (*Berberis Thunbergi*.) Of low spreading growth, forming a dense hedge. The twiggy branches are set with small sharp thorns and bright, clean foliage which in the fall turns to gold and scarlet. The brilliant, red berries are attractive in the fall and winter. A fine plant for a low hedge whether trimmed or allowed to grow naturally.

10 to 12 in., bushy.....\$17.50 per 100
12 to 18 in., \$20.00 per 100 18 to 24 in., \$25.00 per 100

BUCKTHORN. (*Rhamnus Catharticus*.) A very satisfactory plant to use when a medium high to tall hedge is wanted. It stands trimming so well that it can be kept for a long period at practically any

Buckthorn Hedge—A strong, thrifty grower, it presents a fine appearance and gives real protection to the grounds.



height desired. The foliage is of a rich, healthy green and remains clean-looking throughout the summer. It is hardy and one of our most satisfactory hedge plants. The Buckthorn we offer have been transplanted and twice cut back, making the plants well branched right from the bottom. Many nurseries offer plants which are seedlings and do not have the root system or the low, well branched tops.

18 to 24 in..\$10.00 per 100 3 to 4 ft..\$20.00 per 100
2 to 3 ft.. 15.00 per 100

CARAGANA or SIBERIAN PEA TREE. (*Caragana Arborescens*.) Thrives in any well-drained soil and is hardy in the most exposed locations. Is suitable for use where a medium or tall-growing hedge is desired. Sometimes the foliage does not remain in good condition during the latter part of the summer.

12 to 18 in...\$ 7.50 per 100 2 to 3 ft...\$15.00 per 100
18 to 24 in... 10.00 per 100 3 to 4 ft... 20.00 per 100

COTONEASTER or QUINCEBERRY. (*Cotoneaster Acutifolia*.) The fresh-looking, glossy green foliage of this plant and its thrifty, dense growth, combined with its hardiness, makes it ideal as a hedge plant for use in Minnesota. Even during periods of extremely dry hot weather the foliage retains its healthy glossy green color, having the appearance of being varnished. It stands trimming well. The foliage turns to lovely shades of yellow and red in the fall. We especially recommend this hedge. See cut top of page.

18 to 24 in.....\$22.50 per 100
2 to 3 ft..... 27.50 per 100
3 to 4 ft..... 40.00 per 100

FALL

The crop of Cotoneaster for the fall of 1939 is far below the usual amount, therefore we can not guarantee the above prices beyond the spring of 1939.

CURRENT, Alpine. (*Ribes Alpinum*.) Choice plant for use where a hedge of rather low growth is wanted. It is perfectly hardy and has dense foliage of a pleasing green. Will stand partial shade. We recommend this plant highly where a low hedge is wanted.

12 to 18 in...\$30.00 per 100 18 to 24 in...\$40.00 per 100

HONEYSUCKLE, Tatarian. (*Lonicera Tatarica*.) For use as a large hedge this plant is very satisfactory. It is perfectly hardy and a strong grower. It has myriads of small attractive flowers followed by red berries.

18 to 24 in...\$22.50 per 100 3 to 4 ft...\$35.00 per 100
2 to 3 ft... 27.50 per 100

LILAC, Common Purple or White. (*Syringa Vulgaris*.) Though this plant yields readily to trimming, it is best suited for use as a hedge where it may be left untrimmed. The lovely flowers, one of its chief attractions, would not be produced if trimming was done. Should be planted only where the plants will have room to grow quite large. Please specify color wanted.

18 to 24 in...\$17.50 per 100 3 to 4 ft...\$30.00 per 100
2 to 3 ft... 22.00 per 100

HANSA ROSE. (*Hybrid Rugosa*.) This plant makes a fine untrimmed hedge. The healthy, attractive, heavy, crinkled foliage withstands drouth and extremely hot weather without injury. The large double red flowers are fragrant, very ornamental and are produced in great abundance during June and early July. Scattered flowers are also produced during the balance of the summer and fall. Plants should be cut back to within a foot of the ground early each spring to produce strong flowering shoots.

12 to 18 in.....\$25.00 per 100
18 to 24 in..... 35.00 per 100

SPIREA, Bridal Wreath. (*Spiraea Van Houttei*.) The splendid, graceful foliage and lovely white flowers of this plant make it very desirable for use where an unsharped hedge is desired. It is perfectly hardy and thrifty growing. Should be trimmed only if required to remove very old branches and dead wood.

18 to 24 in.....\$15.00 per 100
2 to 3 ft..... 20.00 per 100
3 to 4 ft..... 30.00 per 100

EVER-GREENS

PRICES INCLUDE BALLING AND BURLAPPING OF ALL EVERGREENS

THIS means that the tree is dug from the soil with the earth remaining undisturbed about the roots of the tree. The ball of earth is securely fastened with burlap. This method practically insures safe transplanting.

In some varieties we have larger sizes than listed, upon which we will be glad to quote prices.

Rose Hill Evergreens Are Famous for Their Beauty

PLEASE NOTE—Excepting the small sizes which may be shipped by express, balled evergreens are best shipped by freight.

ARBORVITAE, American. (Thuja Occidentalis.) A native evergreen. Usually grows bushy at the bottom, tapering toward the top. Color a rich dark green. Very decorative singly or in groups. Will grow in partial shade. During very dry years this variety is often severely injured by drought.

18 to 24 in.....	\$1.50	3 to 4 ft.....	\$4.00
2 to 3 ft.....	2.50		

ARBORVITAE, Pyramidal. (Thuja Occidentalis Pyramidalis.) A popular evergreen, being of compact, shapely, pyramidal habit. Bright green in color. For tall narrow effects at the entrance, about the foundation or elsewhere, it is very desirable under favorable growing conditions.

24 to 30 in.....	\$2.25	5 to 6 ft.....	\$ 8.00
30 to 36 in.....	2.75	6 to 7 ft.....	10.00
3 to 4 ft.....	4.00	7 to 8 ft.....	12.50
4 to 5 ft.....	5.50	8 to 9 ft.....	15.00

ARBORVITAE, Siberian. (Thuja Occidentalis Wareana.) A long-lived, compact, symmetrical grower of neat habit. Conical in form. The deep green foliage holds its color well during winter. A desirable evergreen.

18 to 24 in.....	\$3.00	30 to 36 in.....	\$5.50
24 to 30 in.....	4.25		

FIR, DOUGLAS. (Pseudotsuga Douglasi.) The form of this tree is a broad, sharp-pointed pyramid. A rapid grower and thrives in about any location. It is a desirable variety as a lawn specimen where a large tree is wanted.

3 to 4 ft.....	\$3.50	5 to 6 ft.....	\$8.00
4 to 5 ft.....	5.00		



Evergreens are attractive the whole year through.

JUNIPER, Globe Silver Cedar. (Juniperus Scopolorum Silver Globe). A compact globe form of Silver Cedar that is perfectly hardy. The silvery blue color is retained throughout the winter. A good substitute for Globe Arborvitae.

18 to 24 in. diam...	\$4.50	30 to 36 in. diam...	\$7.50
24 to 30 in. diam...	6.00		

JUNIPER, Pfitzer. (Juniperus Pfitzeriana.) A low, spreading tree with bluish-green foliage. Will grow under almost any condition of soil or exposure. Stands considerable shade. Very desirable. See picture.

12 to 18 in. spread..	\$2.25	30 to 36 in. spread..	\$5.00
18 to 24 in. spread..	3.00	3 to 4 ft. spread..	6.00
24 to 30 in. spread..	4.00		



Juniper, Pfitzer's

JUNIPER, Pfitzer, Upright Form. Usually the Juniper Pfitzer is allowed to form a low, broad, irregular dwarf tree. By staking when young the tree will assume a more upright habit and serves a very useful purpose in landscape plantings, where a not too tall tree is wanted.

Specimen Staked Trees 18 to 24 in. wide and 18 to 24 in. high	\$4.50
Specimen Staked Trees 24 to 30 in. wide and 24 to 30 in. high	\$6.00
Specimen Staked Trees 30 to 36 in. wide and 30 to 36 in. high	\$7.50
Specimen Staked Trees 36 to 42 in. wide and 36 to 42 in. high	\$9.00

JUNIPER, Red Cedar. (Juniperus Virginiana.) Of pyramidal form, densely branched. Bright green in early spring, gradually darkening during the summer. Pinkish tinge to foliage in late fall. Is very hardy and can be trimmed.

2 to 2 1/2 ft.....	\$2.50	5 to 6 ft.....	\$ 9.00
2 1/2 to 3 ft.....	3.50	6 to 7 ft.....	10.00
3 to 4 ft.....	5.00	7 to 8 ft.....	12.50
4 to 5 ft.....	7.50	8 to 9 ft.....	15.00

JUNIPER, Savin. (Juniperus Sabina.) A low, many-branched type, usually not over two to three feet high. Its branches are spreading, dense, heavily clothed with dark green foliage. A hardy, desirable dwarf evergreen. A general favorite. See picture on page 16.

12 to 18 in. spread..	\$2.00	30 to 36 in. spread..	\$4.00
18 to 24 in. spread..	2.75	36 to 48 in. spread..	5.00
24 to 30 in. spread..	3.50		

How to Plant Evergreens

(1) Dig hole a foot larger and deeper than ball of earth. Provide good, loamy top soil to fill around ball.



JUNIPER, Canadian or Prostrate. (Juniperus Communis Depressa.) Vigorous - growing, spreading bushy evergreen, rarely over three feet high. The sharp-pointed leaves are gray-green above, silvery white beneath. Some trees are very low in form, others more upright.

- 18 to 24 in. spread.....\$2.50
- 24 to 30 in. spread..... 2.75

JUNIPER, Silver Cedar. (Juniperus Scopulorum.) This attractive evergreen is a bright silver blue in color which is most pronounced during hot, dry weather. It is a fine substitute for the Pyramidal Arborvitae where that tree does not thrive, being narrow, symmetrical and compact. Having but one central stem it is not subject to breakage from heavy snows. The selected type we offer insures an even silvery blue color and uniform growth. This evergreen does not turn brown during the winter and is truly beautiful the year around. During the recent extremely dry years when all varieties of Arborvitae as well as most other evergreens have suffered serious losses, the Silver Cedar has stood both the dry and cold weather without injury. There is no better tree to plant as a substitute for Pyramidal Arborvitae, for it is hardy, does not discolor in winter, is compact in growth and dependable. See picture bottom of page.

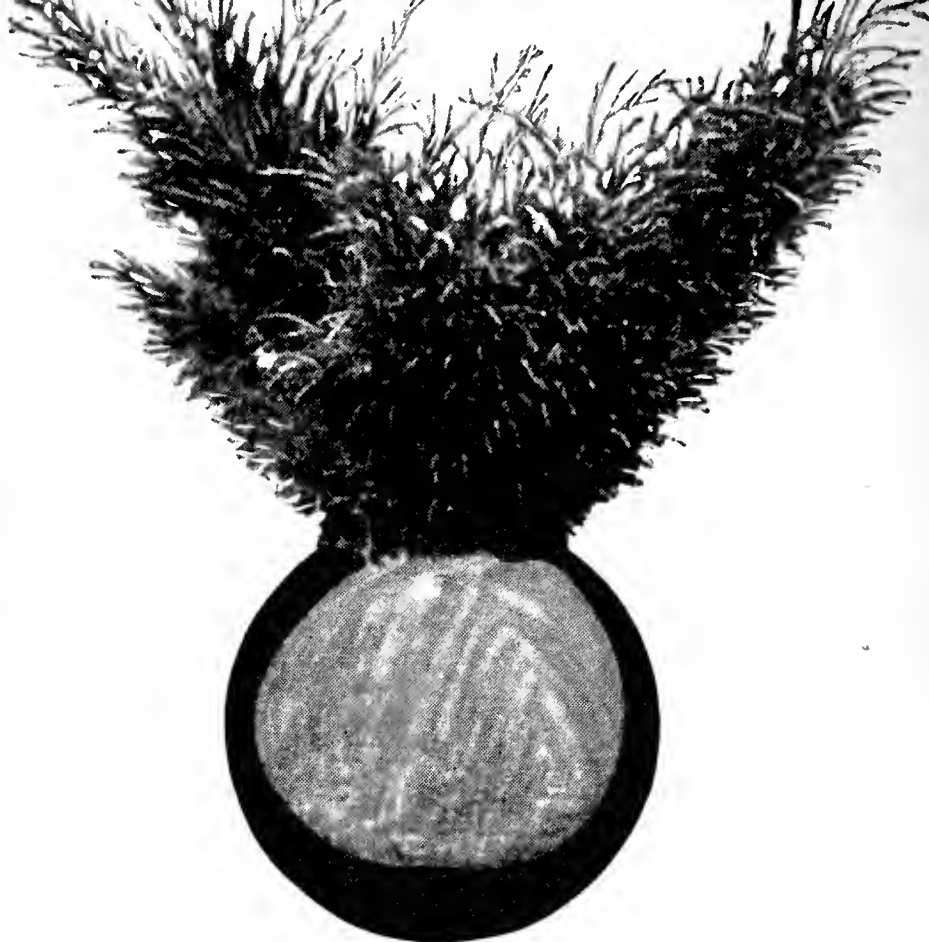
- | | |
|-----------------------|-----------------------|
| 2 to 2½ ft.....\$5.00 | 5 to 6 ft.....\$12.00 |
| 2½ to 3 ft..... 6.00 | 6 to 7 ft..... 14.00 |
| 3 to 3½ ft..... 7.00 | 7 to 8 ft..... 16.00 |
| 3½ to 4 ft..... 8.00 | 8 to 9 ft..... 18.00 |
| 4 to 5 ft..... 9.00 | |

JUNIPER, Horizontal. (Juniperus Sabina Horizontalis.) Resting close to the ground, it is a true creeper. Beautiful bluish green in color. Adapted to use in rockeries or small hillside areas. Unusually hardy.

- 24 to 30 in. spread.....\$4.00
- 30 to 36 in. spread..... 5.00

PINE, Austrian. (Pinus Nigra.) A rich, deep green color, compact, with long needles and bushy branches.

- | | |
|-----------------------|-----------------------|
| 2 to 2½ ft.....\$2.50 | 4 to 5 ft.....\$ 6.00 |
| 2½ to 3 ft..... 3.00 | 5 to 6 ft..... 8.00 |
| 3 to 4 ft..... 4.00 | 6 to 7 ft..... 10.00 |



*Juniper, Savin
Showing burlapped ball of earth*

PINE, Montana. (Pinus Montana.) This tree, though quite similar, is a taller-growing type than the Mugho Pine. The darker foliage lends a splendid contrast with other trees. One of the very best evergreens for planting in foundation groups.

- 12 to 18 in. spread.....\$2.00
- 18 to 24 in. spread..... 2.75
- 24 to 30 in. spread..... 3.50
- 30 to 36 in. spread..... 4.50
- 36 to 42 in. spread..... 5.00
- 42 to 48 in. spread..... 6.00

PINE, Mugho. (Pinus Mughus.) Perfectly hardy, dwarf, bushy evergreen. Branches densely clothed with bright green foliage. Holds color well during winter. A very beautiful low evergreen. By shearing it can be kept as small as desired though this is seldom required. The best of all dwarf evergreens. See picture page 17.

- 12 to 18 in. spread.....\$2.00
- 18 to 24 in. spread..... 2.75
- 24 to 30 in. spread..... 3.50
- 30 to 36 in. spread..... 4.50
- 36 to 42 in. spread..... 5.00
- 42 to 48 in. spread..... 6.00

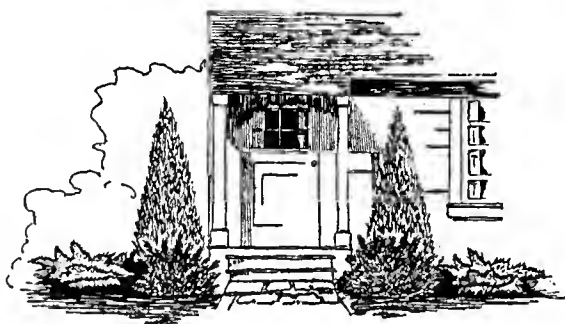
PINE, Ponderosa. (Pinus Ponderosa.) The leaves are dark green with stout spreading branches. Branchlets reddish brown, fragrant when broken. Leaves five to eleven inches long. Cones in clusters. When planted alone or in a group this tree makes a beautiful specimen. It is perfectly hardy and a good tree for screen purposes.

- | | |
|-----------------------|-----------------------|
| 2 to 2½ ft.....\$2.50 | 4 to 5 ft.....\$ 6.00 |
| 2½ to 3 ft..... 3.00 | 5 to 6 ft..... 8.00 |
| 3 to 4 ft..... 4.00 | 6 to 7 ft..... 10.00 |

Juniper, Silver Cedar

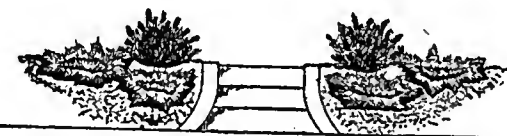


**NOTE—ALL
EVERGREENS IN
THIS SECTION ARE
BALLED AND
BURLAPPED.**



A FRONT ENTRANCE PLANTING

At the front entrance the tall Silver Cedars or the Red Cedars are most appropriate. The low Mugho Pines next to the steps contrast nicely in color and form, as do also the Juniper Savin which complete the groups.



A FRONT SIDEWALK PLANTING

A Mugho Pine at each side at top of steps with two Savin Junipers below gives a very pleasing effect. On narrow lots the Mugho Pines may be used alone.

EVERGREEN PLANTING

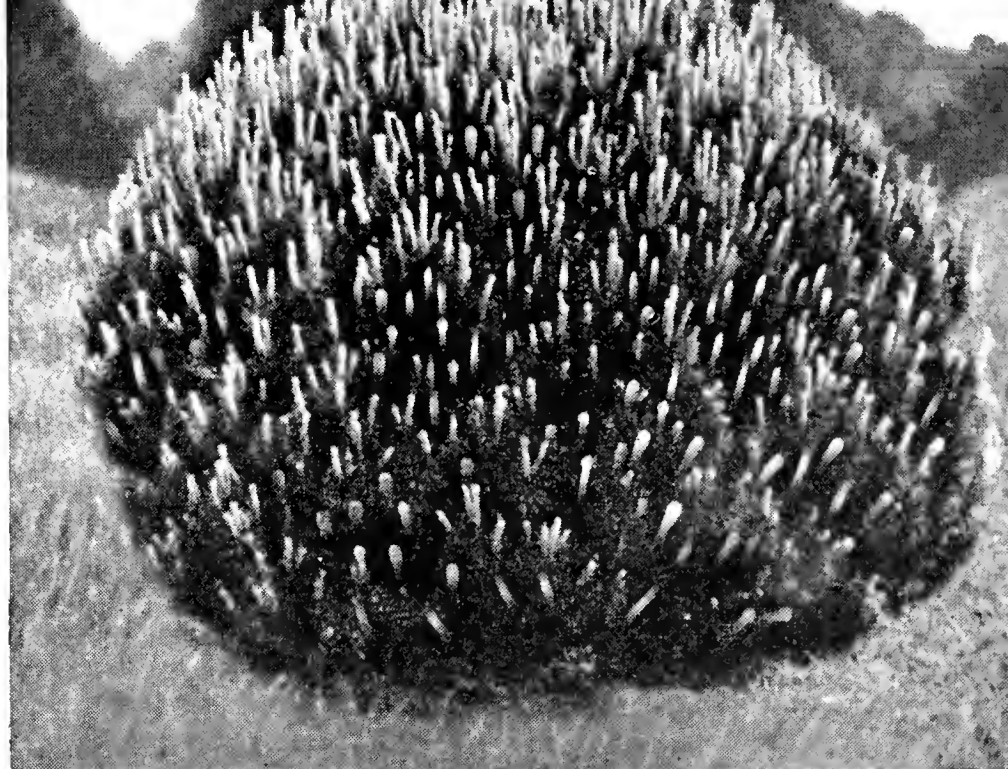
MINNEAPOLIS AND SAINT PAUL

PINE, Scotch. (Pinus Sylestrus.) A large, rapid-growing tree with spreading branches. Leaves bluish green about three inches long. Cones reddish brown. Very hardy and especially desirable as a rapid-growing evergreen and a good background to shrubbery.

3 to 4 ft.....\$3.00	6 to 7 ft.....\$10.00
4 to 5 ft..... 5.00	7 to 8 ft..... 12.50
5 to 6 ft..... 8.00	

SPRUCE, Black Hills. (Picea Canadensis Albertiana.) Foliage varies from green to bluish tint, and is at all times bright and fresh looking. The tree is symmetrical, compact and bushy, and one of the hardiest of all spruces. Planted as a lawn specimen or in the border it is eminently satisfactory.

18 to 24 in.....\$2.00	4 to 5 ft.....\$ 7.00
24 to 30 in..... 2.50	5 to 6 ft..... 9.00
30 to 36 in..... 3.00	6 to 7 ft..... 12.50
3 to 4 ft..... 4.50	7 to 8 ft..... 15.00
	8 to 10 ft..... 20.00



Mugho Pine

SPRUCE, Colorado Blue. (Picea Pungens Glauca.) A beautiful tree, well known and admired by all. The blue color is brightest in early summer and gradually changes during the summer to a dull blue color. The tree is perfectly hardy and constitutes one of the most beautiful specimen evergreens available. See picture.

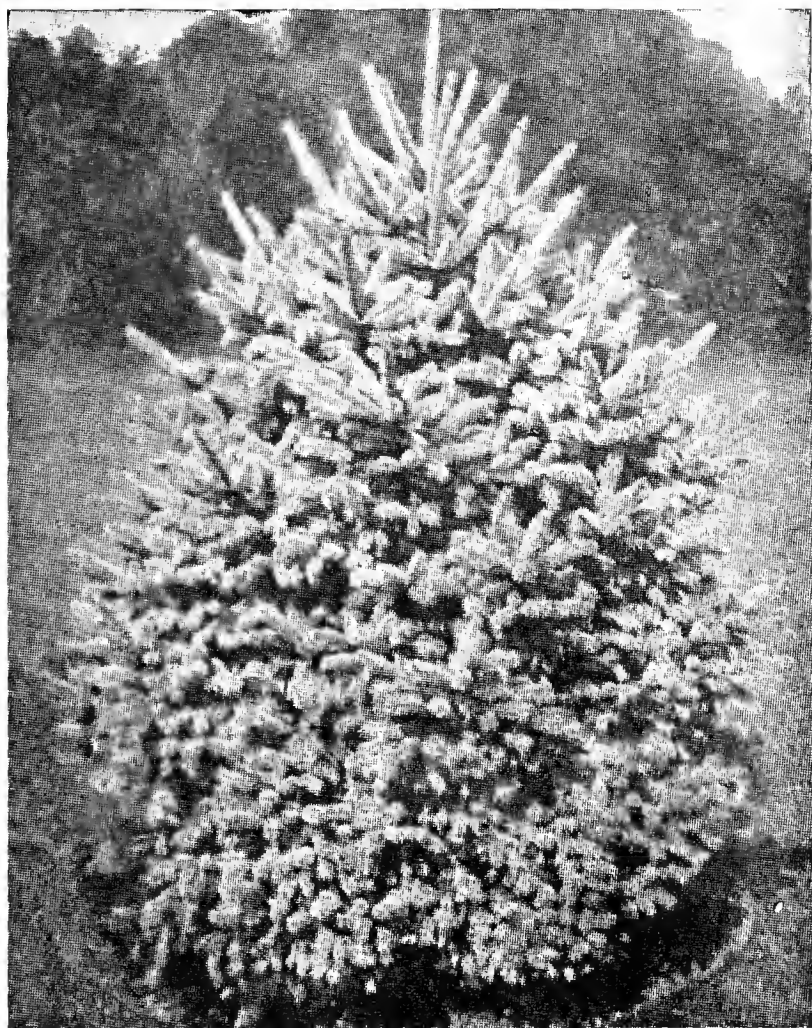
12 to 18 in.....\$2.50	4 to 4½ ft.....\$10.00
18 to 24 in..... 3.00	4½ to 5 ft..... 12.50
24 to 30 in..... 4.00	5 to 6 ft..... 15.00
30 to 36 in..... 5.00	6 to 7 ft..... 22.50
3 to 3½ ft..... 6.50	7 to 8 ft..... 30.00
3½ to 4 ft..... 8.00	8 to 10 ft..... 40.00

SPRUCE, Colorado Green. Vigorous and hardy, resembling the Colorado Blue Spruce except the foliage is green.

18 to 24 in.....\$2.00	4½ to 5 ft.....\$10.00
24 to 30 in..... 3.00	5 to 6 ft..... 12.50
30 to 36 in..... 4.00	6 to 7 ft..... 17.50
3 to 3½ ft..... 5.00	7 to 8 ft..... 22.50
3½ to 4 ft..... 6.00	8 to 10 ft..... 30.00
4 to 4½ ft..... 8.00	

SPRUCE, White. (Picea Canadensis.) The needles are short, sharp-pointed and of a bluish green color. It grows fast, thriving in extremely cold climates. Especially suitable for tall backgrounds and wind-breaks.

18 to 24 in.....\$1.50	3 to 4 ft.....\$ 4.00
24 to 30 in..... 2.50	4 to 5 ft..... 7.00
30 to 36 in..... 3.00	5 to 6 ft..... 9.00

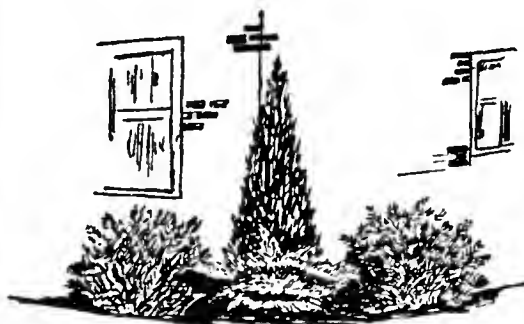


Black Hills Spruce



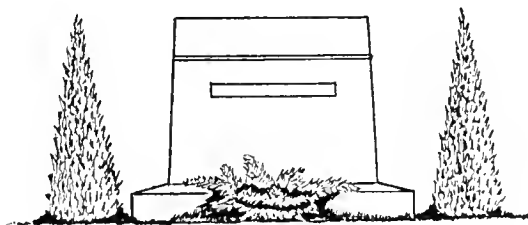
Colorado Blue Spruce

SUGGESTIONS



FOR CORNER OF HOUSE

Here either the Silver Cedar or the Red Cedar provides the needed height. With a Montana Pine at each side, and either a Pfitzer or a Savin Juniper between these two, the effect is harmonious.



A REFINED MONUMENT PLANTING

A Silver Cedar at each end of the monument with a Juniper Savin in front and in back presents a dignified and refined appearance.

Low Mugho Pines may be used instead of the Savin Junipers, if preferred.

COLORFUL HARDY PERENNIALS

FLOWERS WHICH LIVE YEAR AFTER YEAR
IN THE GARDEN

THE plants we offer are strong field-grown perennials which in most varieties will bloom freely the first season and should not be confused with seedling plants so often offered for sale.

*Dozen Rate—Six plants of one kind are sold at the dozen rate.
Note—Plants suitable for rock gardens are marked thus*.*

POSTAGE—If shipment is wanted by parcel post, please add to cover postage and packing figuring the average weight of 1 pound to each perennial plant. See parcel post rates on page 33.



Anemone Hupehensis
Mauve rose in color

ACHILLEA EUPATORIUM. Fern-Leaved Yarrow. Brilliant yellow flowers in flat heads. Foliage finely cut. Very hardy. May be dried for winter bouquets. Three to four feet, 25c each. Dozen \$2.70.

ACHILLEA MILLEFOLIUM. Rosy Milfoil. Dense heads of rosy pink flowers on eighteen-inch stems. Feathery foliage. Strong growing. Blooms July to October. 25c each. Dozen \$2.70.

ACHILLEA PTARMICA. Perry's White. The pure white double flowers bloom from June to September. Excellent for cutting. 1 to 2 feet. See picture bottom of page. 25c each. Dozen \$2.70.

ACONITUM FISCHERI. Monkshood. The helmet-shaped dark blue flowers are produced in September and October. A low-growing variety being 2 to 3 feet high. Very hardy and attractive. Will grow in partial shade. 35c each. Dozen \$3.85.

ACONITUM, Spark's Variety. Tall branched spikes 4 to 5 feet high. Blooms in July and August with deep blue flowers. Foliage an attractive glossy green. 35c each. Dozen \$3.85.

ANCHUSA ITALICA. Dropmore. Stately plants of easy culture growing 4 to 5 feet high and producing masses of rich gentian blue flowers in June and July. 25c each. Dozen \$2.70.

ANCHUSA MYOSOTIDIFLORA.* Forget-me-not Anchusa. Clusters of dainty blue flowers resembling forget-me-nots on a dwarf plant 12 inches high. Flowers May and June. 35c each. Dozen \$3.85.

ANEMONE HUPEHENSIS. Delightful mauve rose flowers 1½ inches in diameter are borne in profusion from August until frost. Grows about 18 inches high. See picture above. 35c each. Dozen \$3.85.

ANEMONE PULSATILLA.* Pasque Flower. Interesting violet flowers borne in profusion in the spring. Plants about a foot high. Fine for rockery or foreground of flower border. 25c each. Dozen \$2.70.

AQUILEGIA CANADENSIS.* American Columbine. The native bright red and yellow variety. Blooms June to August, 2 feet high. See picture page 19. 25c each. Dozen \$2.70.

AQUILEGIA. Crimson Star.* Its flowers are very large with crimson sepals and spurs, and white petals; an entirely new color in Aquilegias. The plant has a sturdy free-flowering habit. 35c each. Dozen \$3.85.

AQUILEGIA CRYSANTHA.* Golden Columbine. The beautiful golden yellow flowers are in bloom for two months. 2 feet. 25c each. Dozen \$2.70.

AQUILEGIA CAERULEA.* Colorado Columbine. Lovely blue flowers with long spurs. June and July. 2 feet. 25c each. Dozen \$2.70.

AQUILEGIA. Mrs. Scott Elliot's Strain.* Large size, long spurred flowers in all shades. 25c each. Dozen \$2.70.

AQUILEGIA. Rose Queen.* A lovely, long-spurred, pink flower. A splendid addition to the Aquilegias. 25c each. Dozen \$2.70.

ARABIS ALPINA.* Alpine Rockcress. Dense masses of pure white flowers. 10 to 12 inches, blooms May to August. Fine for border and rockery. 25c each. Dozen \$2.70.

ARTEMISIA.* Silver King. A striking plant with silvery gray leaves. A brilliant contrast plant in the garden and lovely when cut for winter bouquets. 3 feet. 25c each. Dozen \$2.70.

ARTEMESIA. Lactiflora. A tall growing plant of fine foliage and heads of small, white flowers in August and September, which fill the garden with fragrance. A splendid and graceful cut flower. 25c each. Dozen \$2.70.

HARDY ASTER OR MICHAELMAS DAISY

THIS group of lovely autumn flowering perennials is of splendid value for use as a show flower in the garden or as cut flowers. The flowers are produced in great profusion on long stems that hold the blooms strongly upright and make cutting easy. Average height 3 to 4 ft. The following named varieties give a wide range of colors to choose from.

ALDERMAN VOLKES. A lovely new Aster; bright rosy red flowers are borne profusely in clusters. About 24 inches tall. 35c each. Dozen \$3.85.

BLUE GEM. Double flowers of rich blue. The finest blue. 25c each. Dozen \$2.70.

LADY LLOYD. The clear rose pink flowers are very fine and long lasting. 25c each. Dozen \$2.70.

PEGGY BALLARD. Large sprays of double rosy mauve flowers produced in great abundance. 25c each. Dozen \$2.70.

QUEEN MARY. The gracefully arranged flowers of a pleasing bluish lavender measure 2½ inches across. 3½ feet tall. 35c each. Dozen \$3.85.

SUNSET. A delightful new Aster with flowers of sunset pink. Very free flowering. Grows about 36 inches high. 35c each. Dozen \$3.85.

WHITE LADY. The clear white semi-double flowers are produced freely on a plant 3 to 4 feet tall. 35c each. Dozen \$3.85.

Achillea—Perry's White



MINNEAPOLIS AND SAINT PAUL

ASTER ALPINUS GOLIATH.* Showy bluish purple flowers in May and June. 6 to 10 inches. Fine for rockery or edge of borders. Plant in full sun. 25c each. Dozen \$2.70.

ASTILBE. Pink Plume. Feathery plume-like pink colored flowers in June and July. Handsome foliage. Very attractive in flower border. About 2 feet tall. 40c each. Dozen \$4.40.

BAPTISIA AUSTRALIS. False Indigo. Pea-shaped flowers of dark blue which resemble Lupines. Blooms in June, produced on 2-foot spikes. 25c each. Dozen \$2.70.

BOLTONIA LATISQUAMA. Profusely covered with thousands of starlike lavender-pink flowers on plant 4 to 6 feet tall. Excellent cut flowers for large gardens. August and September. 25c each. Dozen \$2.70.

CAMPANULA MEDIUM. Canterbury Bells. Large, bell-shaped flowers in blue, pink or white. A biennial 3 feet tall. Blooms late June and July. 25c each. Dozen \$2.70

CAMPANULA CALYCANTHEMA. Cup and Saucer, Canterbury Bell. A tall, erect-growing biennial. Flowers large, cup and saucer shaped during late May and June. Colors, blue and white. 25c each. Dozen \$2.70.

CAMPANULA CARPATICA.* Carpathian Harebell. A dwarf, compact plant 8 to 10 inches high. Flowers clear blue, bell-shaped, in July and August. A good border plant. 25c each. Dozen \$2.70.

CAMPANULA ROTUNDIFOLIA. Blue Bells of Scotland. Slender, arching stems about one foot tall carry delightful drooping blue bells. Little round leaves clustered at the base. Fine for crevices in the rock garden and easy to grow in the border. Stands partial shade. Blooms June to August. 25c each. Dozen \$2.70.

CARNATION. Grenadin. The most hardy variety of double carnations for the border. The brilliantly colored flowers are a riot of color in the June border. Their spicy fragrance and the perfect form of flower make them valuable cut flowers.

King of Blacks. A rich velvety maroon. **White Gem.** Pure, glistening white.

Bright Scarlet. A glowing, vivid scarlet. **White Gold.** New. A delicate pastel yellow. **Rose Queen.** A lovely clear deep rose. 25c each. Dozen \$2.70.

CENTAUREA MONTANA. Perennial Cornflower.

Attractive violet-blue flowers, thistle-like in form. Blooms July to September. 2 feet. 25c each. Dozen \$2.70.

CENTAUREA DEALBATA. Large attractive rose-pink flowers, thistle-like in form. July and August. 2 feet. 25c each. Dozen \$2.70.

CERASTIUM TOMENTOSUM.* Snow in Summer. Snow white flowers produced in abundance during June through August. Silvery white foliage. 10 to 12 inches tall. Fine for borders or rock gardens. 25c each. Dozen \$2.70.

CHELONE LYONI. Turtle Head. Hardy perennial closely allied to the Pentstemon, and of easy culture. The heads of showy purplish red flowers, resembling a turtle head, are borne on 2 to 3 foot stems. 25c each. Dozen \$2.70.

CHRYSANTHEMUM. Amelia, Pink Cushion. Amelia is a dwarf, compact, cushion-like plant, which makes one think of the old-fashioned Azalea. In autumn it is completely smothered by its pink flowers and it is not at all unusual to count upward of 500 or 600 blooms on a single plant. A most interesting and worthwhile 'mum. Strong plants. 35c each. Dozen \$3.85.

COREOPSIS. An abundance of golden yellow daisy-like flowers from June until October. Makes a fine showing in the garden and splendid for cutting as the stems are wiry and graceful. See picture below. 2 feet. 25c each. Dozen \$2.70.



Aquilegia (Columbine)
Pink, blue, yellow, crimson
or red and yellow
All Aquilegias will grow in
semi-shade.



Campanula Medium
Canterbury Bells
Blue, pink or white

DAHLIAS

A splendid late summer and autumn flowering plant and fully deserving of widespread popularity. The wide color range offers a most attractive selection. The roots must be dug up after the first frost and stored in cellar over winter.

AVALON. What a beautiful large and bold flower carried on a fine strong heavy stem. The color of the showy, well-shaped blooms is a pure clear yellow. 25c each. Dozen \$2.70.

JACK ROSE. The best crimson for garden or cutting. 25c each. Dozen \$2.70.

JERSEY BEACON. Chinese scarlet flowers of large size on strong stems. Very attractive. 35c each. Dozen \$3.85.

JERSEY BEAUTY. Considered the very best all around Dahlia for every purpose. It surely is the finest true pink variety in commerce today. 35c each. Dozen \$3.85.

MADONNA. White suffused a soft lavender pink; very fine. 25c each. Dozen \$2.70.

MRS. I. de VER WARNER. Of vigorous growth, free flowering, and with beautiful long stemmed blooms of a charming orchid-lavender color. 35c each. Dozen \$3.85.

SYLVIA. Deep pink tinting to flesh pink at center; large perfect form on long stiff stems. One of the best for cutting or garden. 25c each. Dozen \$2.70.

WHITE KING. A general favorite with the commercial grower. Pure white, large with fine long stems. 35c each. Dozen \$3.85.

Coreopsis—Golden Yellow



LARKSPURS

DELPHINIUM BELLADONNA. One of the most continuous bloomers of all Larkspurs, with delicate clear turquoise blue flowers. 4 to 5 feet. 25c each. Dozen \$2.70.

DELPHINIUM. Blackmore and Langdon Strain. Selected as one of the best of the English strains. Extra large flowers, excellently placed on strong, sturdy stems. Many of them measure over 6 feet in height. A blending of rich blues. 35c each. Dozen \$3.85.

DELPHINIUM CHINENSE. Handsome feathery foliage and deep gentian blue flowers. June through September. 1 to 2 feet. 25c each. Dozen \$2.70.

DELPHINIUM CHINENSE ALBUM. A pure white form of the above. 25c each. Dozen \$2.70.

DELPHINIUM GOLD MEDAL HYBRIDS. This is an extra fine strain of strong vigorous habit with large spikes of flowers from two to three feet long; in fine shades of light blue to deep indigo blue and royal purple with pastel tones of mauve, pink and lavender blendings. Some forms are double, some single. See picture. 5 to 6 feet. 25c each. Dozen \$2.70.

DELPHINIUM BELLAMOSA. A very rich dark blue shade. Flowers on spikes 15 to 18 inches long, excellent for cutting. Blooms for a long period if kept cut. 25c each. Dozen \$2.70.



Dicentra (Bleeding Heart)
Pink flowers

foliage. Splendid for rock garden or for edging. Blooms continuously if flowers are cut. 10 to 12 inches. 25c each. Dozen \$2.70.

DICENTRA EXIMA.* Plumy Bleeding Heart. Beautiful finely cut foliage and pink heart-shaped flowers. Grows 12 to 18 inches high and blooms throughout the season. One of the choicest border plants. 40c each.

DICENTRA SPECTABILIS. Bleeding Heart. The heart-shaped pink flowers have long been a favorite. Grows 2 to 3 feet tall and blooms during late April and May. See picture. 35c each. Dozen \$3.85.

DICTAMNUS FRAXINELLA. Gas Plant. The quaintly formed flowers are white or pink in color. Leaves are ash-like, clean looking and attractive. Both foliage and flowers are fragrant. June and July. 2½ feet. See picture. 40c each.

DIGITALIS GLOXINIAEFLORE. Foxglove. This stately plant is a biennial, bearing spikes of long tubular flowers in rose, purple and white. 3 to 4 feet. Late June and July. See picture. 25c each. Dozen \$2.70.

ERIGERON SPECIOSUS. Large, handsome aster-like blue flowers, violet tinted with golden yellow centers, during June and July; fine for cutting; grows 2 to 3 feet high. 25c each. Dozen \$2.70.

EUPHORBIA POLYCHROMA. This plant grows into a very pretty, formal rounded clump about a foot high. Very attractive foliage. Covered in May and June with yellow flowers. 35c each. Dozen \$3.85.

FERNS, Hardy.* Their beautiful foliage should be in every yard. Very fine for shaded locations where other plants will not thrive. We offer assorted hardy native varieties. 25c each. Dozen \$2.70.

FILIPENDULA. Meadow Sweet. White flowers borne in graceful feathery plumes. Handsome divided leaves. June and July. 18 to 24 inches. 50c each. Dozen \$5.50.

FORGET-ME-NOTS.* See Myosotis, page 23.

FUNKIA CAERULEA. Blue Plantain Lily. Handsome dark green foliage with blue lily-like flowers, borne on drooping spikes. Stands partial shade. Blooms July and August. 18 to 24 inches. 25c each. Dozen \$2.70.

FUNKIA SUBCORDATA GRANDIFLORA. White Plantain Lily. Bears large, pure white, lily-shaped flowers. Very attractive broad glossy dark green leaves. Stands shade. 24 inches. 50c each. Six for \$2.70.

FUNKIA VARIEGATA. Most attractive with its wide leaves of glossy green variegated with white. Blue flowers. Will grow in partial shade. Blooms July and August. 18 to 24 inches. 35c each. Dozen \$3.85.

GAILLARDIA GRANDIFLORA. Blanket Flower. A very showy flower in the garden and splendid for cutting. The center is dark red while the petals are crimson and yellow. A profusion of bloom from June to frost. 18 to 24 inches tall. See picture. 25c each. Dozen \$2.70.

GLOBULARIA.* Globe Daisy. A dwarf, tufted little plant with beautiful lavender flower heads. June to September. Does well in front of a well-drained border and is a brilliant picture in the rock garden. 25c each. Dozen \$2.70.

Beautiful GLADIOLUS Grand for Cutting

FOR beautiful flowers available from July until late fall, there are none more dependable or magnificent than the Gladioli. Planted in clumps they are attractive in the garden and as a cut flower they have no peer. By planting at intervals, about one week apart, starting the first part of May and continuing to the middle of June, a succession of bloom may be had from July until late fall. Plant the bulbs in cultivated, well-drained soil about 5 inches deep. They do best in full sun. When cutting 3 or 4 leaves should be left to the plant which will allow the bulb to properly mature. After the first killing frost, take the bulbs up carefully and cut off the stalk about 1 inch from the bulb and allow it to dry about one week. Then pack in shallow boxes and place for the winter in a cool dry cellar where the temperature will not go below freezing. The following varieties are among the most lovely and dependable:

POSTAGE—If wanted by parcel post please add for postage and packing figuring at the average weight of 2 lbs. to a dozen gladioli. Please see postage rates on page 32.

ROSE HILL BLUE RIBBON GLADIOLI COLLECTION.

This assortment of bulbs consists of a wide range of colors and is sure to give you perfect satisfaction. 35c per dozen.

BARON HULOT. Rich deep indigo blue. A fine medium sized flower. 10c each. Dozen 75c.

BETTY NUTHALL. Large, magnificent coral pink flower with light orange throat. 15c each. \$1.00 per dozen.

CRIMSON GLOW. Extra large flowers. Tall spike of a brilliant crimson. 10c each. 75c per dozen.

DR. F. E. BENNETT. A very desirable variety with large, brilliant, fiery red flowers. 10c each. 75c per dozen.

GIANT NYMPH. Giant LaFrance pink, with creamy yellow throat powdered scarlet. 15c each. \$1.00 doz.

GLORIANA. A strong grower. Flowers rich salmon with creamy blotch. Choice. 10c each. 75c dozen.

GOLDEN DREAM. A very fine, deep golden yellow. A strong, tall grower. A truly beautiful flower. 15c each. \$1.00 per dozen.

MARY PICKFORD. Creamy white, throat a soft sulphur yellow. A lovely flower. 10c each. 75c per dozen.

MINUET. A delightful large orchid flower. The finest of this color. 15c each. \$1.00 per dozen.

MRS. LEON DOUGLAS. One of the tallest, strongest-growing of all Gladioli. The immense blooms of luminous coral rose are marked with vivid splashes of rich ruby. No variety is more showy, or arrests

DIANTHUS ALPINUS ALLWOODI.* Glossy leaves and large flowers in various shades of rose and pink. July and August. 6-inch. Splendid for rock gardens. 25c each. Dozen \$2.70.

DIANTHUS BARBATUS. Sweet William. The old-fashioned garden favorite. Flowers in color combinations of red, white and pink. 1½ to 2 feet. See picture. Blooms late May to July 25c each. Doz. \$2.70

DIANTHUS PLUMARIUS.* Clove Pink. Fragrant flowers in rose-pink and white. Handsome blue-green foliage. Splendid for rock garden or for edging. Blooms continuously if flowers are cut. 10 to 12 inches. 25c each. Dozen \$2.70.

cut. 10 to 12 inches. 25c each. Dozen \$2.70.

cut. 10 to 12 inches. 25c each. Dozen \$2.70.

cut. 10 to 12 inches. 25c each. Dozen \$2.70.

cut. 10 to 12 inches. 25c each. Dozen \$2.70.

cut. 10 to 12 inches. 25c each. Dozen \$2.70.

cut. 10 to 12 inches. 25c each. Dozen \$2.70.

cut. 10 to 12 inches. 25c each. Dozen \$2.70.

cut. 10 to 12 inches. 25c each. Dozen \$2.70.

cut. 10 to 12 inches. 25c each. Dozen \$2.70.

cut. 10 to 12 inches. 25c each. Dozen \$2.70.

cut. 10 to 12 inches. 25c each. Dozen \$2.70.

cut. 10 to 12 inches. 25c each. Dozen \$2.70.

cut. 10 to 12 inches. 25c each. Dozen \$2.70.

cut. 10 to 12 inches. 25c each. Dozen \$2.70.

cut. 10 to 12 inches. 25c each. Dozen \$2.70.

cut. 10 to 12 inches. 25c each. Dozen \$2.70.

cut. 10 to 12 inches. 25c each. Dozen \$2.70.

cut. 10 to 12 inches. 25c each. Dozen \$2.70.

cut. 10 to 12 inches. 25c each. Dozen \$2.70.

cut. 10 to 12 inches. 25c each. Dozen \$2.70.

cut. 10 to 12 inches. 25c each. Dozen \$2.70.

cut. 10 to 12 inches. 25c each. Dozen \$2.70.

cut. 10 to 12 inches. 25c each. Dozen \$2.70.

cut. 10 to 12 inches. 25c each. Dozen \$2.70.

cut. 10 to 12 inches. 25c each. Dozen \$2.70.

cut. 10 to 12 inches. 25c each. Dozen \$2.70.

cut. 10 to 12 inches. 25c each. Dozen \$2.70.

cut. 10 to 12 inches. 25c each. Dozen \$2.70.

cut. 10 to 12 inches. 25c each. Dozen \$2.70.

cut. 10 to 12 inches. 25c each. Dozen \$2.70.

MINNEAPOLIS AND SAINT PAUL

GYPSOPHILA PANICULATA. Baby's Breath. Remarkably numerous starry, single white flowers, borne on thread-like stalks. Very fine for bouquets. 2 to 3 feet. July and August. 25c each. Dozen \$2.70.

GYPSOPHILA, BRISTOL FAIRY. A recently introduced double, ever-blooming Baby's Breath. Has larger, whiter flowers than the old Baby's Breath. Blooms from June to October. For winter bouquets it dries perfectly and does not discolor. Combines lovely in bouquets of fresh flowers too. 60c each.

HELENIUM AUTUMNALE. Golden yellow flowers in August and September. 4 to 5 feet tall; very good for cutting or garden show. 25c each. Dozen \$2.70.

HELENIUM RIVERTON GEM. The flowers, borne in clusters are colored old gold suffused with bright terra cotta and red. Blooms August to October. 3 to 4 feet. Showy in the garden, fine for cutting. 25c each. Dozen \$2.70.

HELIOPSIS SCABRA ZINNIAFLORA. The showy flowers are double, golden yellow in color, and produced during July and August. They closely resemble the Zinnia in form. A desirable cut flower. About 24 inches high. 25c each. Dozen \$2.70.

HEMEROCALLIS DR. REGAL. Very handsome, rich orange yellow flowers. Very fragrant and fine for cutting. 25c each. Dozen \$2.70.

HEMEROCALLIS FLAVA. Lemon Day Lily. Grows 2 to 3 feet high with long, narrow leaves and produces deep lemon-yellow fragrant flowers from early June until well into July. 25c each. Dozen \$2.70.

HEMEROCALLIS FLORHAM. Large trumpet-shaped flowers of a rich golden yellow color with deeper yellow markings. Grows 3 feet high. Blooms June and July. 25c each. Dozen \$2.70.

HEMEROCALLIS FULVA. Tawny Day Lily or Golden Lily. The flowers are coppery orange, trumpet-shaped and produced on plants about 3 feet tall. Blooms June and July. 25c each. Dozen \$2.70.

HEMEROCALLIS KWANSO. A double-flowered variety with large, rich, golden bronze flowers in July and August. 25c each. Dozen \$2.70.

HEMEROCALLIS MIDDENDORFFI. Rich orange yellow flowers, very fragrant. Fine for cutting. 25c each. Dozen \$2.70.

HEUCHERA BRIZOIDES.* Has more robust foliage and better habit than *Heuchera sanguinea*; the flowers are light pink and produced profusely in June. Flowers resemble lily of the valley in form. Fine for cutting. 35c each. Dozen \$3.85.

HEUCHERA SANGUINEA.* Coral Bells. Graceful spikes of coral-red flowers on plants growing 1½ to 2 feet tall. A compact foliage. Excellent for cutting and fine in the rock garden. June to September. 35c each. Dozen \$3.85.

HIBISCUS, MEEHAN'S MALLOW MARVELS. A magnificent strain of hardy Mallows, which for size and profusion of bloom and richness of coloring are among the most striking and beautiful perennials that grow. Flowers 8 to 10 inches in diameter ranging in color through various shades of red, pink and white. See cut. 25c each. Dozen \$2.70.

HOLLYHOCKS, ALTHAEA. Single, mixed colors. Beautiful large fringed flowers. 5 to 7 ft. July and August. 25c each. Dozen \$2.70.

HOLLYHOCKS. Double-flowering. We offer these beautiful flowers in red, pink, yellow, white, maroon, rose and salmon-pink. They grow 5 to 7 feet tall. Blooms July and August. See picture on page 22. 25c each. Dozen \$2.70. Extra large 40c each. Dozen \$4.40.



Dianthus (Sweet William)
White, red and pink flowers
in variations



Hemerocallis Flava
Lemon Yellow



Gaillardia
Petals of yellow and crimson,
center deep red

Dictamnus (Gas Plant)
Pink or white
flowers



Hibiscus
Various shades of red, pink and white



Delightful IRIS

RICH IN COLOR

THE Iris is a magnificent hardy perennial and a general favorite. They have been referred to as the Orchid of the hardy garden. The Iris offers innumerable color combinations of unsurpassed beauty, and the lovely structure of the flower is difficult to describe. It is one of our easiest perennials to grow, requiring a minimum of care and thriving under conditions of soil and weather in which other perennials would fail. In the following carefully selected list a splendid selection is offered.



Oenothera Fraseri
Satin yellow flowers



Siberian Iris
blue or white

GERMAN IRIS

- ALABASTER.** A very fine white flower of good form and texture. 35c each. Dozen \$3.85.
- AMBASSADEUR.** Standards smoky purple, falls velvety purple maroon. A magnificent Iris. 25c each. Dozen \$2.70.
- BLUE BIRD.** Flowers of the brightest blue. The intense blue coloring makes this an unusual type and a very attractive one. 25c each. Dozen \$2.70.
- CANARY BIRD.** The standards are a bright yellow and the falls a very deep yellow. On account of its intense coloring, this Iris is most attractive. 25c each. Dozen \$2.70.
- CINNIBAR.** A splendid large flower, a blending of violet and purple in color. Falls are extremely velvety. Tall growing. 35c each. Dozen \$3.85.
- GEO. J. TRIBOLET.** A magnificent flower, whose red purple coloring has a blackish velvety sheen. 25c each. Dozen \$2.70.
- GERTRUDE.** A very fine violet blue Iris of large size. 25c each. Dozen \$2.70.
- LENT A. WILLIAMSON.** Standards a blue violet, falls a rich purple. Of perfect form. A very fine Iris. 35c each. Dozen \$3.85.
- LORD OF JUNE.** A very handsome Iris of large size. Standards light blue, falls lavender violet. 35c each. Dozen \$3.85.
- MADAM CHEREAU.** Standards pure white, edged blue. Falls white with blue penciling. Very popular. 25c each. Dozen \$2.70.
- MOTHER OF PEARL.** Standards and falls both bluish lavender with a faint creamy undertone. Flowers large and perfectly formed. 40c each. Dozen \$4.40.
- MRS. ALAN GRAY.** A delicate lavender-pink and very early bloomer. Gives one the impression of pink, compared with other Iris. 25c each. Dozen \$2.70.
- NEGLECTA.** The standards are a light blue and the falls a darker blue in a pleasing combination. 25c each. Dozen \$2.70.
- NIEBELUNGEN.** Standards are fawn and yellow, falls violet-purple and bronze. Strong grower, blooms freely. 25c each. Dozen \$2.70.
- PENELOPE.** Standards white, falls white veined red. A delightful flower. 25c each. Dozen \$2.70.
- PALLIDA DALMATICA.** Standards and falls are a lavender-blue, shading to silvery blue. Fine for massing. 25c each. Dozen \$2.70.
- R. W. WALLACE.** A beautiful velvety deep purple Iris. Tall growing, strong and vigorous; sweet fragrance. 25c each. Dozen \$2.70.



German Iris—Assorted
Come in a wide variety of colors

SHEKINAH. A very handsome, clear, soft yellow with a little deeper color at the throat. Exquisitely fragrant. 25c each. Dozen \$2.70.

SWEET LAVENDER. The pale lavender coloring of this variety is delightful. 25c each. Dozen \$2.70.

WEDGEWOOD. The richest "Wedgewood China" blue throughout with striking white beard. 25c each. Dozen \$2.70.

DWARF IRIS

IRIS PUMILA.* Dwarf Bearded Iris. Purple flowers. Grows about ten inches high, coming into bloom early in April. Suitable for border effect or in front of taller-growing varieties. 25c each. Dozen \$2.70.

SIBERIAN IRIS

SIBERIAN BLUE. Flowers are clear blue borne on long stems. A strong grower and very hardy. Valuable for cutting, blooms later than the German Iris. See cut. 25c each. Dozen \$2.70.

SIBERIAN WHITE. Same as above but white in color. 25c each. Dozen \$2.70.

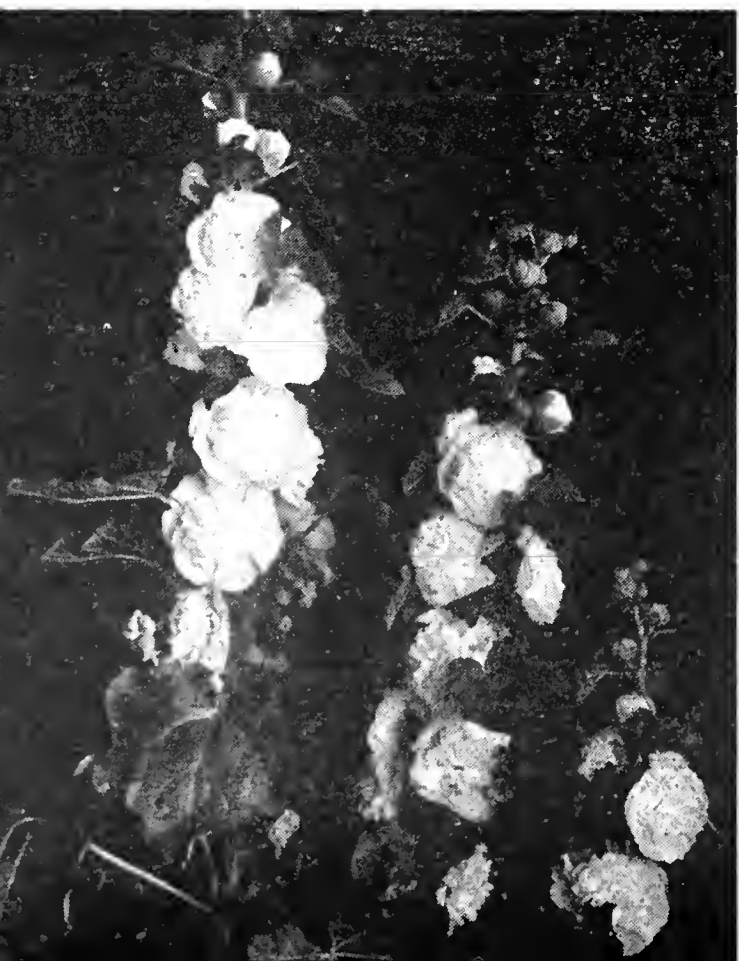
LATHYRUS LATIFOLIUS, Hardy Sweet Pea. A rampant grower, resembling the annual Sweet Pea. Mixed colors, red, pink and white. Train on arches, pergola, fences, etc. 35c each. Dozen \$3.85.

LIATRIS PYCNOSTACHYA, Kansas Gay Feather. Long, narrow spikes of rich purple flowers. 4 feet high. Striking in the rear of the border. See picture. 35c each. Dozen \$3.85.

Liatris, Kansas
Gay Feather
Rich purple



Double Hollyhocks
Available in a wide variety of colors



MINNEAPOLIS AND SAINT PAUL

LILIUM AURATUM. Gold Banded Lily. The flowers are large and graceful, composed of six petals of a delicate ivory-white, thickly studded with chocolate crimson spots and striped through the center a golden yellow. 40c each. Dozen \$4.40.

LILIUM BELAMCANDA CHINENSIS. Blackberry Lily. A very unusual lily with unique star shaped red flowers about two inches across. The shiny black berries in clusters are most attractive and can be used in winter bouquets gilded or natural. Very hardy. Grows about 2½ feet tall. Blooms in June and July. 25c each. Dozen \$2.70.

LILIUM ELEGANS. A variety growing 18 inches tall with orange-red flowers in profusion. Blooms June and July. Very hardy. 25c each. Doz. \$2.70.

LILIUM REGALE. The Regal Lily. The flowers are white slightly suffused with pink. A beautiful shade of canary yellow at the center and extending part way up the trumpet. Delightfully fragrant. A single stalk will often have ten to fifteen large blossoms. The finest lily for Minnesota gardens. 3 feet. Blooms in July. See picture. 5 to 6 inch circumference blooming size. 25c each. Dozen \$2.70. Extra large, 8 to 9 inch, 40c each. Dozen \$4.40.

LILIUM SPECIOSUM RUBRUM. Rubrum Lily. The base color is blush-pink which is heavily spotted with crimson. A delightful lily. 2 feet. August and September. See picture bottom of page. 40c each. Dozen \$4.40.

LILIUM TENUIFOLIUM. Coral Lily. Bright scarlet flowers with recurved petals on a slender, dainty plant about 18 inches tall. Very fine. 25c each. Dozen \$2.70.

LILIUM TIGRINUM. Single Tiger Lily. A popular garden Lily with large, bright orange blossoms marked with dark spots. A robust growing lily of easy culture. 3 feet. 25c each. Dozen \$2.70.

LILIUM TIGRINUM FL. PL. Double Tiger Lily. This magnificent Lily is borne in immense clusters on tall stems. The flowers are very large and very double. Color is orange-red spotted with black. Hardy and strong growing. 3 feet. 25c each. Dozen \$2.70.

LILY OF THE VALLEY.* (Convallaria Majalis.) The lovely, fragrant, white bell-shaped flowers are produced on plants about 10 inches tall. Does well in semi-shade. Blooms May and June. 25c each. Dozen \$2.70.

LINUM PERENNE.* Flax. Dainty, feathery foliage, and sparkling blue single flowers all summer. 18 to 24 inches. A very attractive and showy flower. 25c each. Dozen \$2.70.

LOBELIA CARDINALIS. Cardinal Flower. Grows 2 to 4 feet high, producing vivid crimson flowers on long spikes in August and September. 25c each. Dozen \$2.70.

LOBELIA SIPHILITICA. Great Blue Lobelia. The flowers which are blue streaked with white are grown on long spikes. Blooms June and July and often in September. Plant is about 2 feet tall. 25c each. Dozen \$2.70.

LUPINUS, Lupine. We offer a wonderful new strain that may be classed among the most beautiful of all hardy flowers. Colors are both rich and delicate shades of blue, mauve, pink, etc., and are borne on long spikes that for size and beauty rival giant Snapdragons. The added novelty of being sweet scented makes these one of the best garden plants we have ever distributed. 3 to 4 feet high. We offer the following colors: Blue, red, yellow, pink and white. 25c each. Dozen \$2.70.

LYCHNIS CHALCEDONIA. Campion. Brilliant vermilion-scarlet flowers in June and July 2 to 3 feet high. A striking color in the garden. See cut. 25c each. Dozen \$2.70.

LYSIMACHI NUMMULARIA.* Moneywort. This is an excellent carpeting plant to grow in semi-shaded or moist places. Crawls delightfully over rocks in the rockery and quickly covers bare, unsightly spots. Forms a dense carpet and bears bright, small yellow flowers. 25c each. Dozen \$2.70.

LYTHRUM ROSEUM. Loosestrife. The rose-colored spikes about two and one-half feet tall are very showy. Blooms July and August. 25c each. Dozen \$2.70.

MONARDA DIDYMA. Oswego Tea. An attractive plant for the perennial border. Brilliant crimson-scarlet flowers in close heads on plants 2 to 3 feet high. June through August. 25c each. Dozen \$2.70.

MYOSOTIS.* Forget-me-not. The charming little blue flowers, produced freely, have long been a favorite. Will thrive best in a moist, semi-shaded location. Blooms off and on all summer. 25c each. Dozen \$2.70.

NEPETA MUSSINI.* The silvery-grey foliage is aromatic. The hundreds of small flowers are lavender-blue. An excellent plant for edging or in the rock garden. 12 to 18 inches. May to August. 25c each. Dozen \$2.70.

OENOTHERA FRASERI. Evening Primrose or Sundrops. The satiny Poppy shaped yellow flowers are borne on 12 inch stems. Shiny, clean looking leaves. Blooms June to September. 25c each. Dozen \$2.70. See picture page 22.

PAPAVER NUDICAULE.* Iceland Poppy. Charming cup-shaped flowers on stems one foot high. Orange-yellow or white in color. A plant of neat habit with fern-like foliage. Blooms June through September. 25c each. Dozen \$2.70.

PAPAVER ORIENTALE. Oriental Poppy. The flowers of brilliant crimson are about six inches across and produced on plants about 2½ feet tall. Blooms in June. 25c each. Dozen \$2.70.

PAPAVER ORIENTALE. Mrs. Perry. Orange-apricot in color. A very fine variety. 35c each. Dozen \$3.85.

PENTSTEMON BARBATUS TORREYI. Beard Tongue. Bright scarlet flowers in spikes about two feet long from June to August. A graceful decorative plant growing about 3 feet tall. See cut. 25c each. Dozen \$2.70.

PENSTEMON. Blue Gem. A very dark blue flowered penstemon. Grows 18 inches tall. Very free blooming and good for cutting. 25c each. Dozen \$2.70.



*Pentstemon
Bright scarlet*



*Regal Lily
White suffused with pink*

*Lilium Rubrum
Blush pink spotted with crimson*



*Lychnis Chalcedonia
Brilliant vermilion scarlet*



PEONIES

Rival of the Rose

Care should be taken in planting the Peony, to set the roots with the eyes about 2 inches below the surface of the soil. Planting too deep will prevent blooming though the plant may otherwise seem healthy. Peonies do best in fairly heavy soil. If, therefore, your ground be very light and sandy it is advisable to incorporate considerable clay with it. Peonies are gross feeders. Thoroughly decomposed cow manure or commercial fertilizer should be used but care must be taken not to have the fertilizer come into direct contact with the roots.

We offer strong 3 to 5 eye roots at prices quoted. Also 6 to 8 eye, blooming size roots at double the price quoted after each variety.

COURONNE D'OR. Pure white with a circle of gold stamens. A very fragrant semi-rose type. Late mid-season bloom. The cut flowers keep very well. 50c each.

DUKE OF WELLINGTON. Outer petals snow white; center of flower sulphur white. A vigorous tall growing; mid-season bloomer. Fragrant flowers of large size. 50c each.

FELIX CROUSSE. The bomb-shaped flower is a rich, brilliant ruby red. The flower is large and comes into bloom in late mid-season. 75c each.

FESTIVA MAXIMA. Early white with inner petals slightly tipped carmine. Free-blooming and fragrant. 50c each.

GROVER CLEVELAND. Dark Crimson. A late rose-type, strong, vigorous grower with large, full flowers. \$1.00 each.

JAMES VICK. A very lovely bright red peony. Blooms late mid-season. A round flower on strong stems. 50c each.

KARL ROSENFELD. Flower crimson, large, compact semi-rose type. Mid-season. Very strong, tall and free-blooming. Slightly fragrant. \$1.00 each.

LE CYGNE. The finest white peony. Large, perfectly formed flowers, cream white with a touch of green at the heart. A strong growing plant. \$2.00 each.

L'ESPERANCE or EDULIS SUPERBA. Bright pink with slight violet shadings at base of petals. Large crown type. Early. Fragrant. Strong and upright in habit. A very free bloomer. 50c each.

LIVINGSTONE. Color lilac-rose with silver-tipped petals. Carmine flecks in center. A late, dependable variety. It is erect in growth and a free bloomer. 75c each.

LOUIS VAN HOUTTE. Fine violet-red bloom of dazzling effect. Very fine, shapely bloom. Medium to large flower. Mid-season. 75c each.

MADAME DE VERNVILLE. Guard petals sulphur-white, center petals rose-white with carmine touches. An early bomb type. A profuse bloomer with rose fragrance. See cut. 75c each.

MONS. JULES ELIE. Color a beautiful pure pink. This is one of the finest peonies. Blooms early mid-season. \$1.00 each.

PRESIDENT ROOSEVELT. A deep, rich, glowing red of very unusual shade. A strong-growing, truly grand peony. 75c each.

PRINCE OF DARKNESS. A splendid dark red variety. It is free-blooming with flowers borne on long stems. Fine for cutting. 50c each.

SARAH BERNHART. It is one of the strongest growers. Flowers are exceptionally large, apple blossom pink with each petal silver tipped. This flower

COLOR						VARIETY	NAME	HEIGHT	SEASON							
YELLOW	WHITE	PINK	RED	BLUE	PURPLE	CHART for Color Season		IN FEET								
								1	2	3	4	MAY	JUNE	JULY	AUGUST	SEPT
						Achillea	—	Ball of Snow								
						Achillea	—	The Pearl								
						Aconitum	—	Monkshood								
						Aquilegia	—	Columbine								
						Aster	—	New England Aster								
						Boltonia	—	asteroides								
						Campanula	—	in variety								
						Clematis	—	Shrubby Clematis								
						Coreopsis	—	Tickseed								
						Dahlia	—	in variety								
						Delphinium	—	Larkspur								
						Dianthus	—	Hardy Pinks								
						Funkia	—	Plantain Lily								
						Gaillardia	—	Blanket Flower								
						Gypsophila	—	Baby's breath								
						Heuchera	—	Coral-bell								
						Hibiscus	—	Mallow								
						Hollyhocks	—	in variety								
						Heliopsis	—	Orange Sunflower								
						Heimerocallis	—	Lemon Lily								
						Iris	—	in variety								
						Lillium var	—	Regal Lily								
						Lychnis	—	Campion								
						Phlox	—	in variety								
						Peony	—	in variety								
						Papaver	—	Oriental Poppy								
						Papaver	—	Iceland Poppy								
						Pentstemon	—	Bearded Tongue								
						Platycodon	—	Balloon-flower								
						Pyrethrum	—	Persian Daisy								
						Pyrethrum	—	Ox-eye Daisy								
						Pyrethrum	—	Giant Daisy								
						Shasta Daisy	—	or Alaska								
						Statice	—	Sea Lavender								
						Viola	—	Tufted Pansy								

must be seen to be fully appreciated. Fragrant. \$1.00 each.

THERESE. One of the three highest rated peonies. The delicately fragrant flowers are a rich satiny pink rose type and of very large size. \$1.50 each.

VILLE DE NANCY. A very showy purplish-red, large globular rose type flower. Blooms late. 50 each.

SINGLE PEONY

ALBIFLORA. The Bride. A delightful, large, single white flower with long yellow stamens. Very early and free blooming. \$1.00 each.

SINGLE—DARK RED. Dark red. Blooming very early with prominent golden stamens. An attractive variety, very fine for cutting. \$0.75 each.

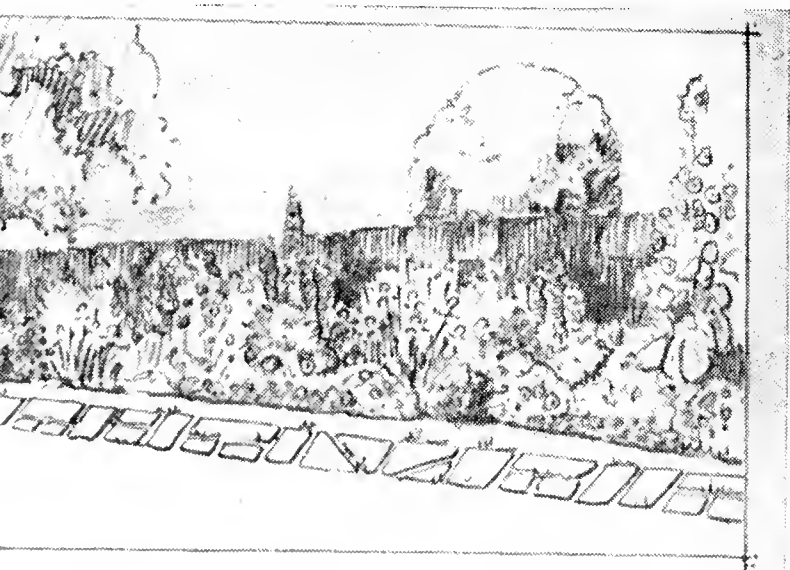
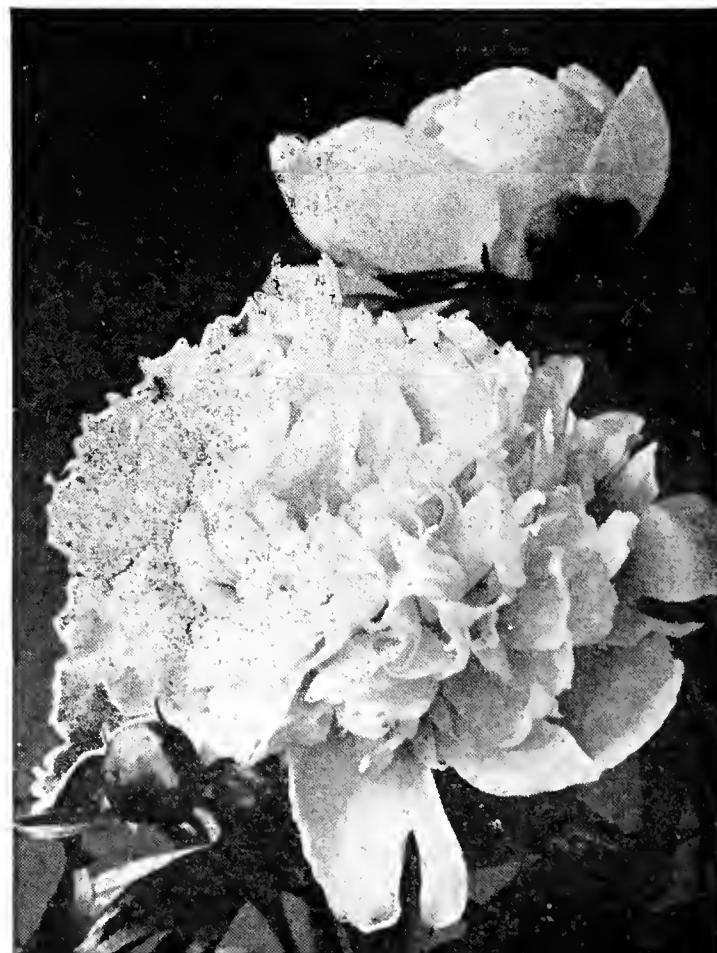
JAPANESE PEONY

MIKADO. Shaped like a gigantic poppy. The flowers are velvety crimson with a gold center. The plant blooms freely and is a distinct favorite. \$1.00 each.

LIST OF PLANTS FOR PLAN TO LEFT

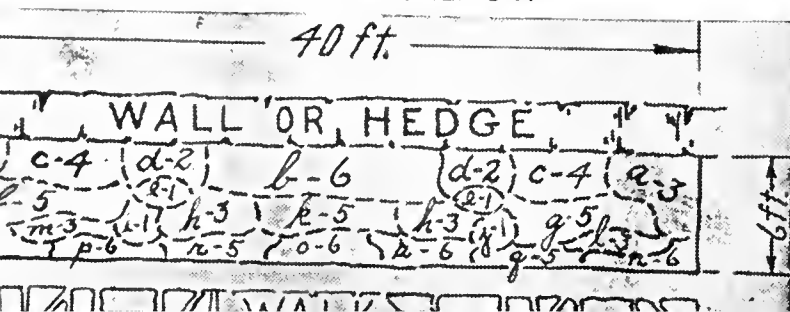
Key	Variety	Quan.
a	Peonies, asst. colors	6
b	Delphinium, Gold Medal Hybrids	6
c	Hollyhocks, asst. colors	8
d	Fall Asters, asst. colors	4
e	Pyrethrum, Giant Daisy	2
f	Phlox, B'Comte	5
g	Phlox, Prof. Schleman	5
h	Coreopsis	6
i	Bristol Fairy Baby Breath	1
j	Statice, Sea Lavender	1
k	Phlox, Mrs. Jenkins	5
l	Gaillardia	3
m	Shasta Daisy, Alaska	3
n	Iris German, asst. colors	12
o	Pyrethrum, Persian Daisies	6
p	Viola Jersey Gem	6
q	Viola Scotch Border	5
r	Heuchera, Coral Bells	5
s	Dianthus, Pink Beauty	6

Peony, Madame de Vernville sulphur white with carmine touches



PERENNIAL BORDER

SEE PLAN BELOW





Platycodon (Balloon Flower)
Flowers deep blue

The Tall Plant Is Beacon Phlox
A brilliant cherry red

Pyrethrum (Persian Daisy)
Shades of deep red thru the
pinks to white

HARDY PHLOX

GLORY OF THE GARDEN IN MIDSUMMER

These beautiful hardy plants are the most colorful and attractive of all during late summer and early fall. Blooming most profusely, their brilliant colors admired by all, they make a wonderful display in the flower border. The following varieties have been selected for their strong growth, clear colors and profusion of bloom.

The Phlox we offer are all strong field-grown, two-year-old plants, sure to bloom the first summer.

AFRICA. A dazzling new deep scarlet variety. Well shaped, large flowers produced on strong stems. One of the best deep red varieties which apparently does not mildew. A gem for the flower border. 35c each. Dozen \$3.85.

B'COMTE. Large panicles of rich, satiny purple flowers. Exceedingly brilliant, Tall growing. Blooms mid-season to late. 25c each. Dozen \$2.70.

BEACON. Brilliant cherry-red of arresting beauty, grows 3 feet high. One of the best in this color. 35c each. Dozen \$3.85.

BRIDESMAID. A lovely white with crimson eye. A tall-growing variety. Blooms mid-season. 25c each. Dozen \$2.70.

COLUMBIA. A new strong growing patented plant. The flowers a soft pink with an eye of light blue, last well in water when cut. 40c each.

COMMANDER. The color is a brilliant deep crimson-red with slightly darker eye. Grows about 24 to 30 inches high and produces a great many spikes creating a wonderful display of color. This variety is comparatively new but already a great favorite. 35c each. Dozen \$3.85.

DAILY SKETCH. A very fine, distinctive, new phlox, salmon pink with a vivid crimson eye. The flowers are unusually large and the plant vigorous and tall growing. A charming English novelty. We consider this the finest new variety we have tested. 50c each. Six for \$2.70.

DIVARICATA. Large fragrant lavender flowers produced in May on stems 10 to 12 inches high. 25c each. Dozen \$2.70.

ENCHANTRESS. Bright salmon pink with dark eye, resembling Elizabeth Campbell in color but far superior as it is a stronger grower with rich, glossy foliage. See cut. 25c each. Dozen \$2.70.

FIREBRAND. A new bright orange-scarlet, almost vermilion. A very profuse bloomer throughout the entire season. Medium height. 35c each. Dozen \$3.85.

FRAULEIN VON LASSBURG. A splendid pure white, tall, mid-season variety. Very free-flowering. 25c each. Dozen \$2.70.

LOTHAIR. A charming phlox, salmon pink deepening in color toward the center. Blooms mid-season. 25c each. Dozen \$2.70.

MISS LINGARD. A very lovely early white, coming into bloom a month ahead of most phlox, large, loose clusters of flowers on strong stems with shiny green foliage. 25c each. Dozen \$2.70. The best early white.

MRS. CHARLES DOOR. A lovely rose-lavender. Tall growing. The finest of all lavender-phlox. 35c each. Dozen \$3.85.

MRS. JENKINS. A very fine, free flowering mid-season white, of medium height. 25c each. Dozen \$2.70.

PROFESSOR SCHLEMAN. A large flowered, lovely pink variety of compelling beauty. Blooms early mid-season. 25c each. Dozen \$2.70.

R. P. STRUTHERS. A blending of rosy carmine with claret red eye. Tall growing, vigorous and slightly fragrant. A fine mid-season variety. 25c each. Dozen \$2.70.

RYNSTROM. A good, strong grower producing an abundance of stems, each one topped with heavy trusses of flowers of a lively rose-pink. 35c each. Dozen \$3.85.

SIR EDWIN LANDSEER. Very bright crimson. Large trusses and vigorous, healthy growth. 25c each. Dozen \$2.70.

DWARF PHLOX

AMOENA.* Fine for carpeting the ground in the rockery or as a border. Forms a sheet 4 inches high of bright pink flowers in the spring. 25c each. Dozen \$2.70.

SUBULATA.* Moss Pink. Masses of pink bloom in early spring. Pretty moss-like evergreen foliage. A fine plant for edging the border and for use in the rockery. Plant in full sun. 25c each. Dozen \$2.70.

SUBULATA. Vivid.* Bright pink with dark pink eye. We consider this the choicest of the dwarf varieties of Phlox. 25c each. Dozen \$2.70.

PHYSALIS. Chinese Lantern Plant. Valued for the bright orange-scarlet lantern-like fruits which when cut and dried may be used for floral decorations during the winter. 2 feet high. 25c each. Dozen \$2.70.

PHYSOSTEGIA VIRGINICA. False Dragonhead. Long spikes of delicate pink flowers in July and August. Plant grows about three feet. 25c each. Dozen \$2.70.

PHYSOSTEGIA. Vivid. A new dwarf variety about 20 inches tall. Flowers are a deep pink and bloom in September. Very good cut flower. 25c each. Dozen \$2.70.

PLATYCODON GRANDIFLORUM. Balloon Flower. Large bell-shaped flowers of a deep shade of blue. Blooms July until late September. 2 to 3 feet high. See cut. 25c each. Dozen \$2.70.

POLEMONIUM COERULEUM. Jacob's Ladder. Erect stems of sky-blue flowers. Graceful pinnate leaves, the flowers borne in loose heads. 1½ feet. June and July. Suitable for rockery. 25c each. Dozen \$2.70.

PYRETHRUM HYBRIDUM. Persian Daisy. The daisy-like flowers are both single and double in shades of white, pink and red to deep crimson. The blossoms are produced on long, graceful stems, making it a very desirable cut flower. 24 inches tall. See picture. 25c each. Dozen \$2.70.

PYRETHRUM. Kelway's Dark Red. This is an improved form of the above described Pyrethrum. The flowers are dark red with a distinctive yellow center. 35c each. Dozen \$3.85.

PYRETHRUM ULIGINOSUM. Giant Daisy. Clusters of large daisy-like white flowers with yellow centers, blooms in late summer and fall. 4 feet tall. See picture. 25c each. Dozen \$2.70.

RANUNCULUS REPENS. Buttercup. A pretty double-flowering, bright yellow buttercup. Masses of blossoms during May and June. 1 foot high. The luxurious foliage makes a fine ground cover. Does well both in sunny and shady locations. 25c each. Dozen \$2.70.

Giant Daisy, white with yellow center



Phlox Enchantress
Bright salmon pink with dark eye

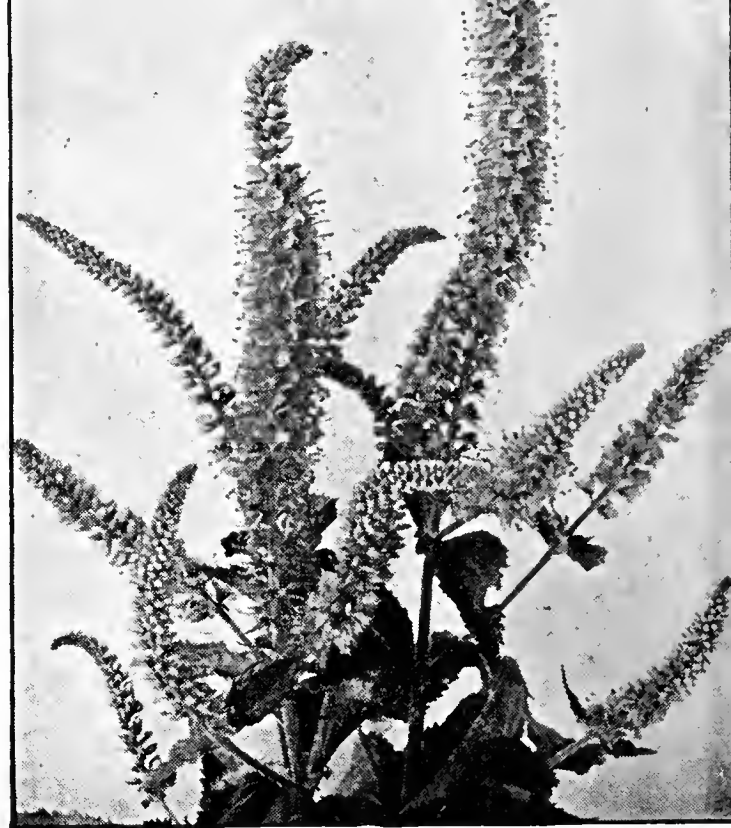




Rudbeckia, Cone Flower
Petals reddish purple, cone of brown



Shasta Daisy, Alaska
White with yellow center



Veronica (Speedwell)
Spikes of violet blue

RIBBON GRASS.* Phalaris Arundinacea Variegata. very ornamental, green leaves striped lengthwise with creamy white. **25c each. Dozen \$2.70.**

RUDBECKIA LACINIATA. Golden Glow. Produces masses of dahlia-like golden yellow flowers from July to September. Strong grower, 5 to 6 feet. **25c each. Dozen \$2.70.**

RUDBECKIA PURPUREA. Purple Cone Flower. Blossoms about four inches across of a peculiar reddish-purple, with a remarkably large cone-shaped center of brown. July and August. 3 feet high. See cut. **25c each. Dozen \$2.70.**

SEDUM ALBUM.* White flowers on a dwarf spreading plant with thick, waxy, round foliage. Fine for rockery. **25c each. Dozen \$2.70.**

SEDUM ACRE.* Golden Moss. A dwarf plant with a profusion of bright yellow flowers from June to July. 3 to 4 inches. Fine for edging the border or for rock gardens. **25c each. Dozen \$2.70.**

SEDUM BRILLIANT.* Stonecrop. Plant growing about eighteen inches high with light green glaucous foliage, large heads of showy bright rose colored flowers in late autumn. **25c each. Dozen \$2.70.**

SEDUM GLAUCUM.* A prostrate plant with blue green foliage. Small white flowers. Very good rock plant. **25c each. Dozen \$2.70.**

SEDUM LYDICUM.* The gray green foliage turns red in winter. White flowers. Plant prostrate. Excellent for rock garden. **25c each. Dozen \$2.70.**

SEDUM STOLONIFERA.* Running Stonecrop. This variety is of creeping habit. Dull rose colored flowers. The leaves turn a beautiful crimson in the fall. 4 to 5 inches. **25c each. Dozen \$2.70.**

SEMPERVIVUM. Hardy Hen and Chickens. Most interesting plants of rosette-like form. Leaves smooth, thick and of a rubbery texture. Fine for rock or wall gardens. **25c each. Dozen \$2.70.**

SHASTA DAISY, ALASKA. Large white flowers with yellow center produced profusely nearly all summer. 12 to 18 inches. Excellent for cutting. A general favorite. See cut top of page. **25c each. Dozen \$2.70.**

STATICE LATIFOLIA. Sea Lavender or Lavender Baby's Breath. Myriads of lavender colored tiny flowers resembling the general form of the Baby's Breath. Leathery, dark green leaves close to ground. Showy in the garden and splendid as a cut flower. May be dried for winter use. **35c each. Dozen \$3.85.**

THALICTRUM DIPTEROCARPUM. Meadow Rue. The charming flowers are lilac mauve brightened by lemon yellow stamens and anthers. They are borne in graceful sprays on a plant about 4 feet tall. Blooms August and September. **35c each. 6 for \$1.90.**

THERMOPSIS. Caroliniana. A lovely plant whose general appearance is that of a yellow lupine. Grows about 2 feet high. Blooms in June and July with 6 to 12 inch racemes of yellow, pea like flowers. Rich green foliage. **50c each. 6 for \$2.70.**

THYMUS SERPYLLUM COCCINEUM.* A dwarf growing creeping plant with fragrant foliage. Covered with brilliant scarlet colored flowers during June and July. 4 to 6 inches. **25c each. Dozen \$2.70.**

TROLLIUS. Gold Quelle. A glorified Buttercup, leaves and flowers resemble the Buttercup. Large, orange-yellow blossoms. 18 to 24 inches. May to August. Grows well in a moist, semi-shaded position. **40c each. Dozen \$4.40.**

TUNICA SAXIFRAGA.* Coat Flower. Small pink flowers in the greatest profusion. 6 inches high. Fine for rockery. **25c each. Dozen \$2.70.**

VALERIANA OFFICINALIS. Hardy Garden Heliotrope. Showy heads of rose-tinted white flowers with heliotrope fragrance. 3 to 4 feet. June and July. Loves moisture. **25c each. Dozen \$2.70.**

VERONICA RUPESTRIS.* A fine rock plant growing 3 to 4 inches high; thickly matted, deep green foliage, hidden in early June under a cloud of bright blue flowers. Does well in light shade and is also a good ground cover for shrub borders. **25c each. Dozen \$2.70.**

VERONICA SPICATA.* Speedwell. Spikes of violet-blue flowers in June and July. Gives splendid color to the border. See cut. 18 inches. **25c each. Dozen \$2.70.**

VINCA MINOR.* Trailing Myrtle. A trailing plant, splendid for covering ground under trees and shrubs. Delightfully softens the effects of the rocks in the rockery. Flowers are blue resembling a small violet. **25c each. Dozen \$2.70.**

VIOLA CORNUTA—TUFTED PANSIES

The flowers resemble the common Pansy in form, though not quite so large. Of very free flowering habit, they bloom from April until October and constitute a most colorful addition to the garden. The following varieties are among the very best:

APRICOT.* Beautiful rich apricot shade, tinged orange toward the center. **25c each. Dozen \$2.70.**

ARKWRIGHT RUBY. Wonderful large rounded flowers of ruby crimson with terra cotta and darker markings. Fragrant. **25c each. Dozen \$2.70.**

JERSEY GEM.* Pure, rich bluish-purple, slightly perfumed flowers. A most attractive variety. **25c each. Dozen \$2.70.**

LUTEA.* The flowers are a bright golden yellow, contrasting beautifully with the darker shades of other varieties. **25c each. Dozen \$2.70.**

PERFECTION. Light blue flowers in abundance all summer, very lovely planted with the yellow sort. **25c each. Dozen \$2.70.**

SCOTCH BORDER.* The flowers are a perfect riot of color, combining practically every shade. **25c each. Dozen \$2.70.**

YUCCA FILAMENTOSA. Adam's Needle. The creamy white flowers are bell-shaped and drooping. Produced on tall stems up to 4 or 5 feet. The foliage is sword-like and woody. July. See cut. **25c each. Dozen \$2.70.**

YUCCA GLAUCA. The leaves are sword-like, rather narrow; grayish-green in color. Flowers are bell-like, drooping white, borne on stems about 3 feet tall. An exceedingly hardy drought resistant variety. **25c each. Dozen \$2.70.**

Yucca, Adam's Needle
Milky white



CLIMBING VINES

VINES create a graceful softening effect. The flowering beauty of many varieties has splended merit and as shade givers they are very fine. Used to embellish an otherwise drab wall or ugly bank, they are indispensable.

POSTAGE—If shipment is wanted by parcel post please add for postage and packing figuring at the average weight of 1½ pounds to each vine. See parcel post rates on page 33.

BITTERSWEET. (Celastrus Scandens.) A hardy, strong-growing vine with glossy leaves. The yellow flowers are followed by conspicuous reddish-orange fruits.

2 year.....\$0.50 3 year.....\$0.75

CLEMATIS, Duchess of Edinburg. The lovely, large, double white variety blooming over a long period.

2 year.....\$1.00 3 year.....\$1.25

CLEMATIS JACKMANI. The gorgeous display of bloom presented by this plant is unequalled among climbing vines. The striking purple flowers often measure six inches across. Being of refined habit it may be grown against the house and in other situations where a coarse-growing vine is not wanted. This Clematis is the most popular vine of all. See cut.

2 year.....\$1.00 3 year.....\$1.25

CLEMATIS, MADAME EDWARD ANDRE. Flowers are about the same size as the Jackmani, crimson red in color. Has a long season of bloom.

2 year.....\$1.00 3 year.....\$1.25

CLEMATIS PANICULATA. The flowers are white, small and star-shaped, very fragrant and so abundant as to almost hide the foliage. It blooms late in the summer when most other vines are through blooming.

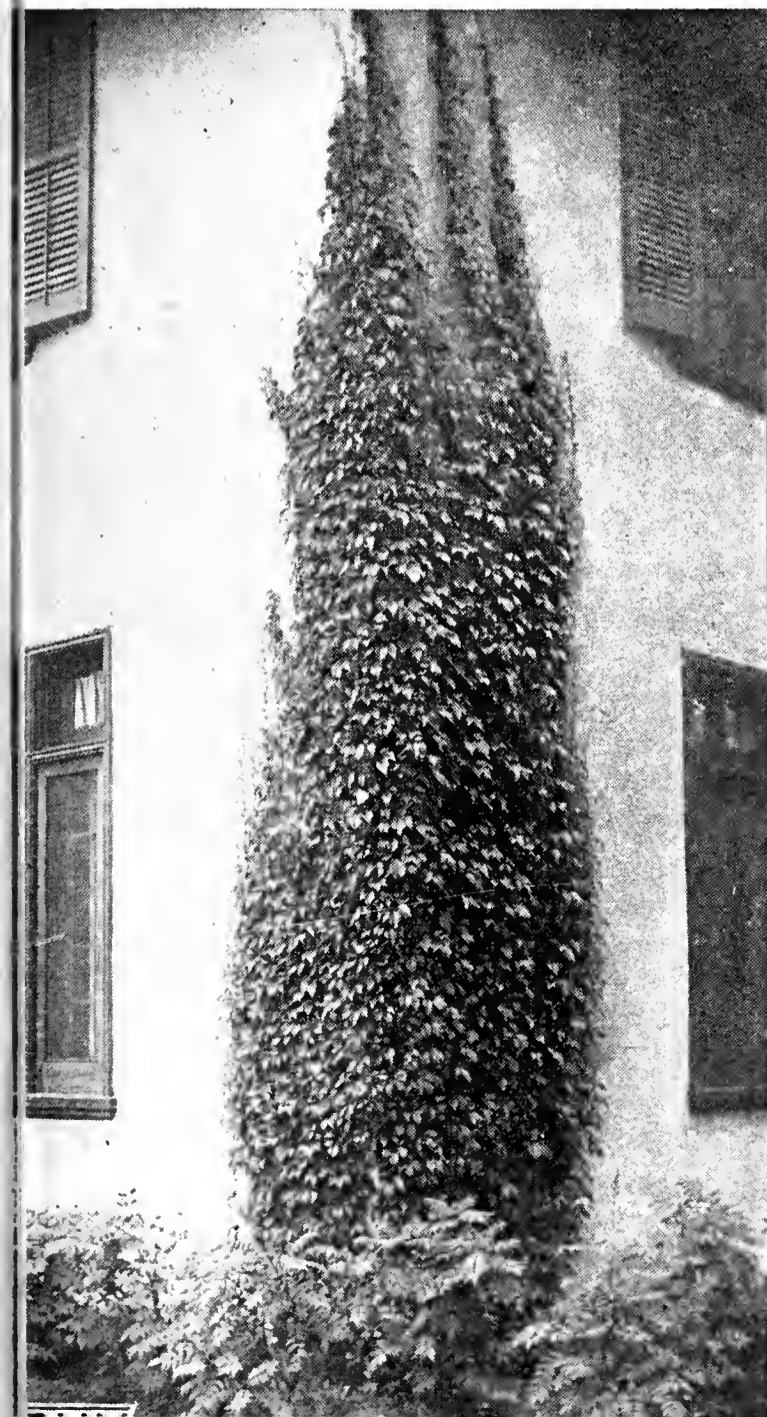
2 year.....\$0.75 3 year.....\$1.00



Clematis, Jackmani
Striking purple flowers

DUTCHMAN'S PIPE. (Aristolochia Sipho.) A vigorous, rapid-growing climber with pipe-shaped flowers. The light green leaves are of very large size, and overlapping they cast a dense shade. **\$1.00** each.

Engelman's Ivy
Clings to stucco or brick



CLEMATIS CULTURE

Plant in well drained rich soil. The hole should be deep enough to accommodate the roots without spreading too much. If the roots are very long and numerous they may be cut back to 6 or 8 inches and some of the weaker roots thinned out. The roots should be separated enough so that soil comes firmly into contact with all the roots. Water thoroughly once a week only, if rain has not already done the watering. As it is essential to keep Clematis roots cool and moist a mulch of peat moss may be used to advantage.

GRAPE, Beta. This grape makes one of the best vines for covering porches and arbors. It is perfectly hardy without winter protection and produces an abundance of fruit of medium size.

2 year extra large.....\$0.35 3 year extra large.....\$0.50

HONEYSUCKLE, Scarlet Trumpet. (Lonicera Sempervirens.) An old favorite; bearing scarlet, trumpet-shaped blossoms over a long period.

2 year.....\$0.50 3 year.....\$0.75

IVY, Boston. (Ampelopsis Vetchi.) A very lovely vine, refined in habit. Clings firmly to such surfaces as presented by brick, coarse plaster, etc. The foliage is fresh deep green in summer, changing to the brightest shades of crimson and yellow in the fall. Tops will often winter kill somewhat during the winter, but the plant comes on very nicely with new growth each spring.

2 year.....\$0.60 3 year.....\$0.85

IVY, Engelman's. (Ampelopsis Engelmani.) The hardiest climbing Ivy for this climate. Splendid to cover brick or stone walls or any other rough surface, as it requires no trellis to grow on. It is a rapid grower. The young growth has a purplish tinge, maturing dull green and turning a bright crimson color in the fall. See cut.

2 year.....\$0.50 3 year.....\$0.75

IVY, AMERICAN or VIRGINIA CREEPER. (Ampelopsis Quinquefolia.) A popular native vine with deeply cut leaves which turn to a beautiful crimson in the fall. Fine for covering rocky slopes, arbors, fences, etc.

2 year.....\$0.50 3 year.....\$0.75

MATRIMONY VINE. (Lycium Chinense.) Planted at the top of walls or embankments, this vine hangs gracefully down, covering beautifully the unsightliness of the ugly surface. The small, star-shaped, purple flowers are succeeded by bright, scarlet, coral-like berries nearly an inch long.

2 year.....\$0.35 3 year.....\$0.50

ROSES

Rose Hill Roses Are Famous For Quality

OUR roses are extra fine large plants that bloomed freely last summer, most varieties being 2 to 3 feet high and with ordinary care will produce an abundance of flowers this coming summer. No better roses can be purchased. Our plants have not been packed in boxes and exposed on bargain counters for days, but are fresh from our nursery.

These fresh roses at 75c each are fully as good quality and size as roses sold in packs at stores for \$1.00 each.

POSTAGE—If shipment is wanted by parcel post please add for postage and packing figuring average weight of each rose at 2 pounds. See parcel post rates on page 33.



Baby Rambler, Ellen Poulsen
Rose pink

Everblooming Hybrid Tea Roses

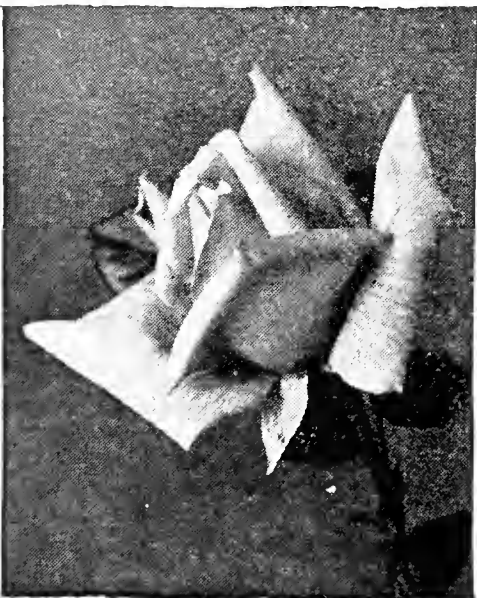
These are the so-called everblooming roses. If the bushes are kept healthy and in good growing condition, though they do not bloom all the time, one crop of flowers follows another at short intervals from June to late October. Winter protection is necessary. The flowers are very beautiful in color, form and fragrance.

Strong 2-year plants.....\$0.75 each

Extra heavy.....\$1.00 each



Pink Radiance H. T.
Bright pink



Dame Edith Helen
Clear pink



Hadley H. T.
Rich crimson

COLUMBIA. Bright pink, sweetly scented flowers of fine form, stiff petals deepening in color as they expand.

DAME EDITH HELEN. A sweetly scented, clear pink rose of fine form. This vigorous plant produces bloom freely on long strong stems.

ETOILE DE HOLLANDE. The half-opened flower is perfect in form and develops into a large, artistically loose bloom of brilliant crimson. It has wonderful fragrance. The plant is strong, with large, healthy foliage, and will thrive in almost all soils and situations.

GRUSS AN TEPLITZ. The double blooms of medium size are brilliant crimson with darker shadings. Splendid fragrance. Blooms most freely in open clusters through the whole season. A universal favorite.

HADLEY. A rich crimson-red flower with velvety texture, good form and lovely perfume. See cut.

KAISERIN AUGUSTE VICTORIA. Well formed, creamy buds develop into flowers of perfect form, snow-white with slight tint of yellow at the center. Fragrant. Extremely lovely.

KILLARNEY. Has long pointed buds opening to a flat flower with enormous petals. Bright pink in color. A very free-flowering, vigorous grower. See cut.

MRS. E. P. THOM. Rated as one of the best yellows. A very free, continuous bloomer; growth strong and bushy.

PINK RADIANCE. The most reliable pink Hybrid Tea Rose. Brilliant rose pink buds, opening to well-shaped, very fragrant flowers, which have splendid keeping quality when cut. See cut.

RED RADIANCE. The flowers are large, deep red; produced freely until frost. Foliage excellent. A very popular rose.

ROSE MARIE. Fragrant, clear, rose-pink flowers of large size, borne freely on plants of notable vigor and health.

SUNBURST. Beautiful yellow flowers strongly suffused with orange at the center. Flowers are well shaped and fragrant. See cut.

TALISMAN. Rich yellow and rose-red. Vigorous, upright grower, bearing many blossoms; splendid for cut flowers.



Killarney H. T.
Bright pink



Sunburst H. T.
Yellow, orange at center

HYBRID PERPETUAL ROSES

THESE roses produce a splendid display of bloom. The flowers are large, full and very fragrant. Hybrid Perpetual Roses are more hardy than the Hybrid Tea class. They are not, however, as profuse bloomers. Winter covering is necessary.

Strong 2-year plants.....\$0.75 each Extra strong plants.....\$1.00 each

CAPTAIN HAYWARD. The scarlet crimson flowers are of splendid form. Very large and fragrant. Blooms over quite a long period on a big, strong plant.

FRAU KARL DRUSCHKI. Considered the best white rose of any class. The splendid snow-white flowers have beautiful form but are without fragrance. Blooms are borne freely on a very strong-growing plant. See cut.

J. B. CLARK. The color is unique among roses, a deep scarlet shaded to blackish crimson. The flowers are very double, slightly fragrant. Requires severe pruning.

MARSHALL P. WILDER. Flowers are large, a bright carmine, very fragrant. A strong grower with a long blooming period.

MRS. JOHN LAING. Soft pink, of beautiful form; exceedingly fragrant and remarkably free-growing. A vigorous grower with handsome foliage. See cut.

PAUL NEYRON. Blooms are lilac-rose of a very large size. Fragrant and double. The plant is a strong grower and a very profuse bloomer.

CLIMBING ROSES

These require training to a trellis or upright support of some sort. Anyone willing to give them the required attention will be more than repaid by the graceful beauty of these plants. Require winter covering.

Strong 2-year plants.....\$0.75 each 3-year.....\$1.00 each

CLIMBING AMERICAN BEAUTY. The delightful rosy crimson flowers are produced on separate stems in clusters. Their lovely fragrance and profusion of bloom give this rose high rank.

CRIMSON RAMBLER. The flowers are produced in great trusses, often thirty or forty in a cluster, appearing like large bouquets. The roses are small, semi-double, and of a bright crimson color.

DOROTHY PERKINS. The rather large, double, clear shell-pink flowers are borne in pendulous sprays. The fragrant flowers do not fade in color.

DR. W. VAN FLEET. The perfectly formed buds are borne on long, stout stems. In color they are flesh pink, deeper at the center. Splendid for cutting, very fragrant. Dark glossy foliage.

EXCELSA. The deep scarlet crimson blooms are produced in profusion in large clusters. A vigorous grower. Has largely replaced the Crimson Rambler.

PAUL'S SCARLET CLIMBER. The well-shaped scarlet flowers are of moderate size and borne in small trusses. They are borne early and last a long time. The plant is of moderate size with good foliage. See cut.

PRIMROSE. Hardy climber, abundance of double canary-yellow blooms.

STAECHELIN. (The Spanish Beauty.) A splendid new climbing Rose, which has the added advantage of being excellent for cutting, as the flowers are borne on 12 to 15 inch stems. Crimson buds opening into large, semi-double pink flowers. The plant is extremely vigorous, making a growth of 10 feet or more each year. One of the most useful and effective.

TAUSENDSCHOEN or THOUSAND BEAUTY. Prettily ruffled large flowers of shades of creamy white and changing to bright rose-pink. A healthy grower.

WHITE DOROTHY PERKINS. The flowers are rather small, very double of pure creamy white. Blooms in profusion on strong healthy plants.

BABY RAMBLER OR POLYANTHA ROSES

These rather small, bushy plants are the most truly ever-blooming of all roses. The bloom is borne in heavy clusters throughout the summer until frost. The size of the bush makes it especially adaptable to home yard plantings. Require careful covering for winter.

2-year-old plants.....\$0.75 each

CATHERINE ZIEMET. Double, pure white flowers in abundance, borne in large fragrant clusters.

MISS EDITH CAVELL. The semi-double flowers are a brilliant scarlet red, rather small in size, produced in large clusters.

ELLEN POULSEN. Rather large, full flowers of bright rose-pink in large compact clusters. Fragrant; profuse blooming.

RUGOSA ROSES AND HARDY BUSH ROSES

Please see Pages 7 and 8



*Paul's Scarlet Climber
Intense scarlet*

HOW TO PLANT ROSES

1st. Dig a hole so large the roots won't be cramped.

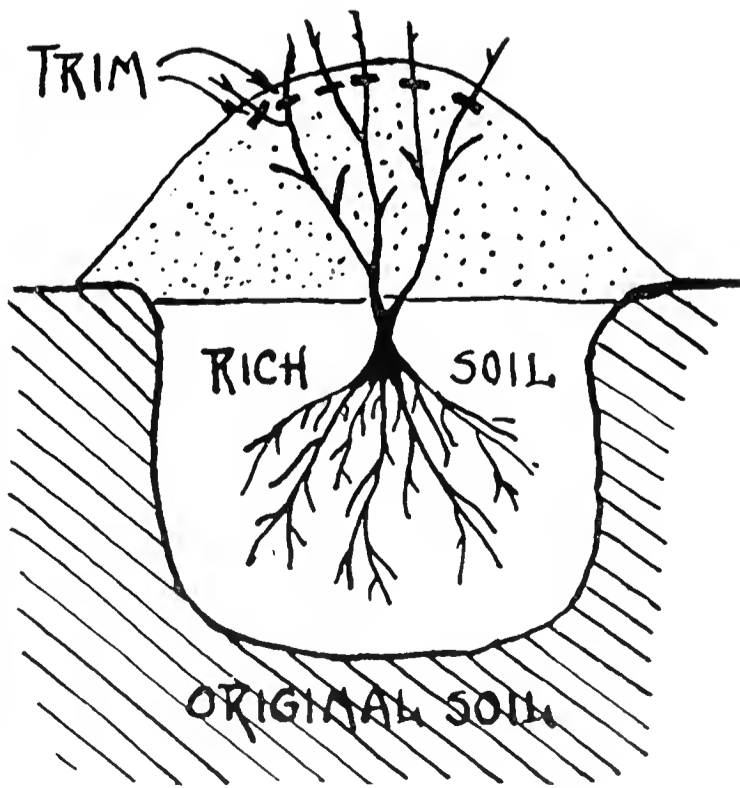
2nd. Place plant depth shown. Fill hole nearly to top with rich soil. Water thoroughly to firmly settle soil.

3rd. Trim plant to about 7 or 8 inches in height as picture shows.

4th. Cover entire top of the plant with a mound of loose soil about 9 inches high.

5th. In about two weeks pull a little of the loose soil away to observe if buds are bursting open. If buds are opening, carefully pull away the mound of loose soil. If buds are still dormant leave the mound of soil until buds are observed to burst open, then remove mound.

WINTER COVERING—Cover for winter this same way and over the mound place about a foot of marsh hay, then a layer of building paper.



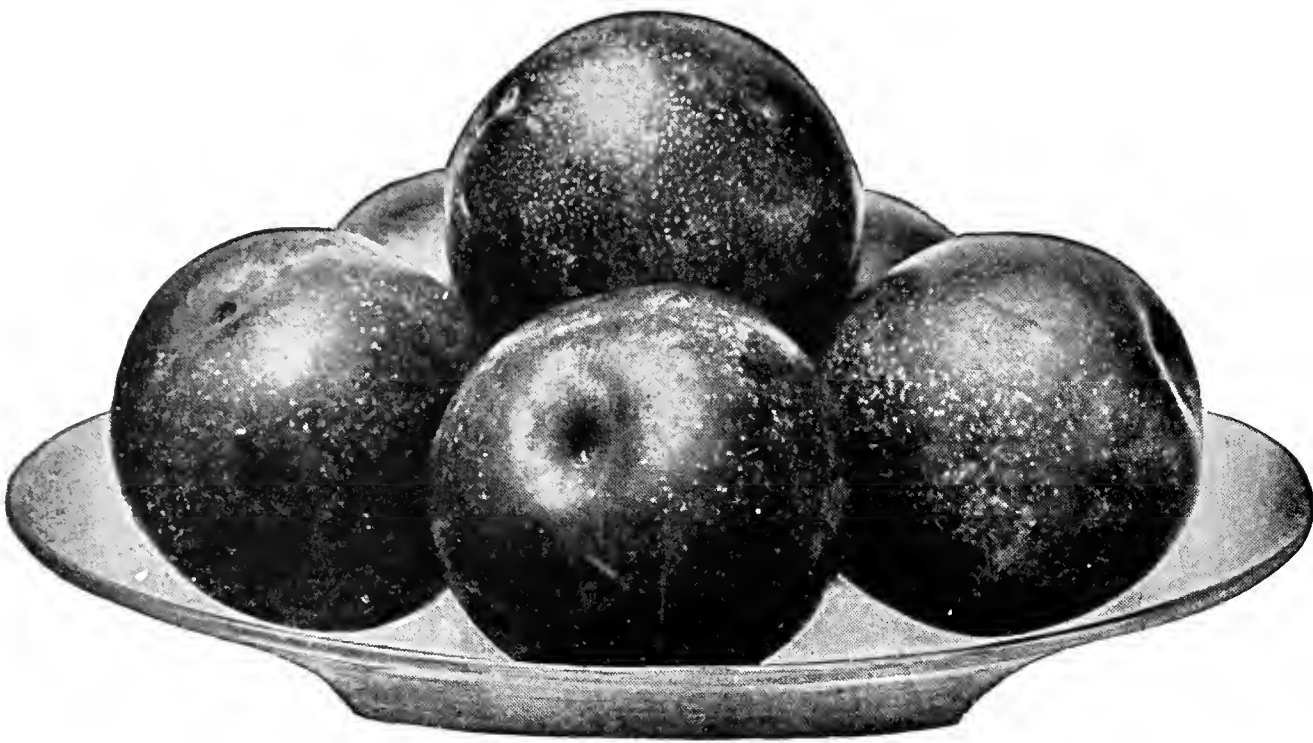
*Fr. Karl Druschki H. P.
Snow white*



*Mrs. John Laing H. P.
Soft pink*

DELICIOUS FRUITS

THE thrifty housewife has long known the savings made when fruits are grown at home. There is something about home-grown fruit that is different. It tastes better than any other. For their ornamental qualities alone, fruit trees are worth while. The next best thing to eating berries right off the vine is to have them served to you directly after picking.



Underwood Plums

POSTAGE—We recommend shipping fruit trees by freight or express. The 3 to 4 foot size and the 4 to 5 foot size may be shipped by parcel post, however. Figure weight at 3 pounds each for the 3 to 4 foot and 4 pounds each for the 4 to 5 foot. Please refer to parcel post rate table on page 33 to figure amount of postage to include with order.

Small fruits such as grapes, strawberries, currants, etc., can be shipped parcel post if desired. Please note weights given under each item.

HARDY APPLES

Prices on Apples and Crabs Except Where Priced

3 to 4 feet.....	\$0.50 each	\$ 5.00 dozen
4 to 5 feet.....	.75 each	7.50 dozen
5 to 6 feet.....	1.00 each	10.00 dozen
6 to 7 feet.....	1.50 each	15.00 dozen

ANOKA. A very early and heavy bearer. A medium sized tree, with fruit in quality equal to the Duchess.

BEACON. Originated at the University Plant Breeding Farm at Excelsior, Minn. A fine new apple hardy and of high quality. Ripens mid-August about the same season as Duchess. Will keep three or four weeks after picking.

DUCHESS. An apple of large size and beautifully colored red. Bears when young and abundantly. Excellent quality. Ripens very early.

HARALSON. Fruit solid red of fine quality. An all-winter keeper. Tree bears when young. The best winter apple for home use or market.

McINTOSH. Bright red fruit, fine flavor. Excellent quality. Keeps until January.

PATTEN'S GREENING. Fruit large, green; flesh white, excellent for cooking and eating during October and November.

PERKINS WINTER. Fine, large, rich red, round apples, resembling the Baldwin. Rapid, robust grower. Fruit keeps until May.

RED WING. Fruit is superior in size, beauty, quality, and keeps all winter. Extremely hardy.

WEALTHY. Fruit of the best quality. Bears when very young. A good market variety. The favorite apple for this section.

HARDY CRAB APPLES

See Prices Under Apples Except for Flame

DOLGO. A handsome tree with light green foliage and attractive red fruit. Fruit jells easily, a red jelly of excellent flavor. Very vigorous. The most dependable crab.

FLAME. (Minnesota No. 635.) This is primarily an ornamental crab but the fruits, though small, make an excellent red jelly. The flowers are similar to other crabs but are borne in great profusion. The tree is compact in growth and of medium size, suitable for lawn planting. The fruits are a brilliant red and hang tenaciously to the trees until mid-winter, months after the leaves have fallen. The effect is a mass of flaming red color from August until November. Trees 5 to 6 feet high often have 250 or more brilliant red colored crabs. The fruit during December and January is attractive to winter

birds. As an ornamental tree in the fall it rivals all other trees with its attractive bright red fruit. Among the ornamental trees in our nursery last fall this ornamental crab attracted by far the most attention.

3 to 4 ft. high.....	\$1.50	4 to 5 ft. high.....	2.00
		5 to 6 ft. high.....	2.50

HOPA CRAB. See page 12.

VIRGINIA. Strong-growing, free from blight. Red fruit of medium size. Good for eating, cooking or jelly.

WHITNEY No. 20. Very hardy and productive. Fruit red in color. Flesh of fine quality. Fine for eating or for sweet pickles.

CHERRIES

EARLY RICHMOND. Red, acid, excellent for cooking or drying.
4 to 5 ft.....\$1.25 each 5 to 6 ft.....\$1.50 each

OKA CHERRY. Immensely productive, bearing next year after setting into orchard. Heavy, annual bearer of large, deliciously flavored fruit, having rich purple-red skin, flesh and juice unexcelled for canning, jam or jelly. Tree is very hardy; is of dwarf habit, making it easy to gather the fruit. Be-

cause of its early bearing and excellent fruit it is certainly a favorite, and we recommend it very highly.

3 to 4 feet.....	\$0.60 each	Dozen.....	\$ 6.00
4 to 5 feet.....	.75 each	Dozen.....	7.50
5 to 6 feet.....	1.00 each	Dozen.....	10.00

WRAGG. Dark purple, extra fine quality, hardy and productive.
4 to 5 ft.....\$1.25 each 5 to 6 ft.....\$1.50 each

Hardy Minnesota Plums

4 to 5 feet.....	\$0.75 each,	\$ 7.50 per dozen
5 to 6 feet.....	1.00 each,	10.00 per dozen
6 to 8 feet.....	1.50 each,	15.00 per dozen

PIEBING. A new plum introduced by Mr. Chas. Haralson, Excelsior, Minn. It is hardy and of vigorous growth, producing a regular crop of unusually large, fine quality red plums. Should be included in every home and commercial orchard.

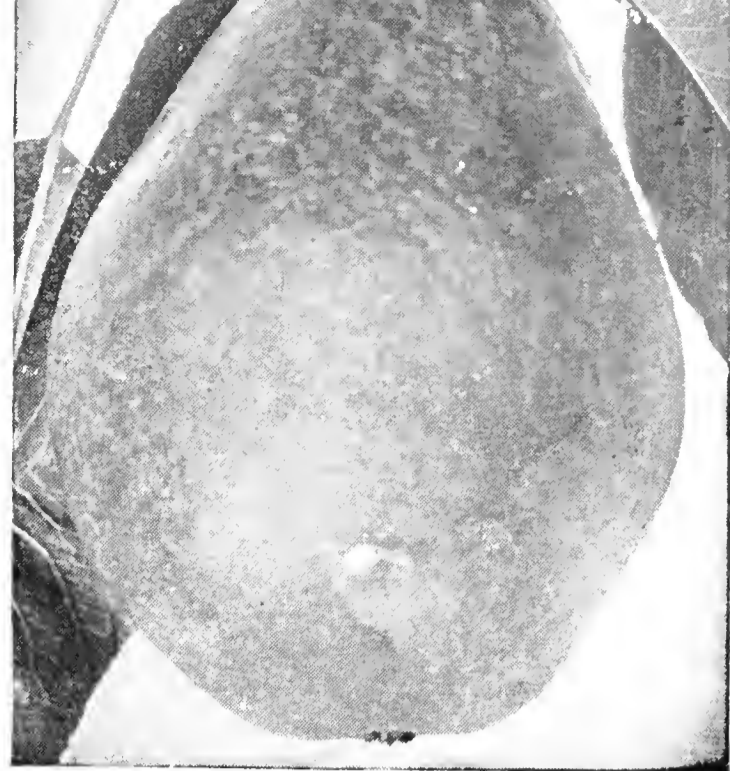
LA CRESCENT. The Apricot flavored plum. Tree vigorous and productive. Fruit medium sized. Clear yellow, tender, fine grained flesh. Semi-free stone, juicy and sweet.

MONITOR. Tree vigorous and productive. Fruit large, almost round, color dark red, quality good.

SUPERIOR. A new, deep red plum of high quality. Fruit is large, with small pit and ripens early. We recommend this new variety.

TONKA. A fine-flavored, juicy plum of large size, good keeper and good market variety. Red.

UNDERWOOD. Fruit attractive red with fairly firm, juicy flesh, small pit, clingstone, hangs well and ripens over a long period. A splendid variety. See picture.



Parker Pear (Minnesota No. 1)

PRUNES

We are offering for the first time a hardy prune. The fruit, though not of large size, is of fine quality and promises to be a fine acquisition to our fruit list.

4 to 5 feet.....	\$2.00 each
------------------	-------------

PEARS

No one need hesitate to plant Pear trees in Minnesota. All who saw the Minnesota State Pear Exhibit at the Minnesota State Fair were convinced that Pears of good size and fine flavor can be grown in abundance in Minnesota. The following varieties are dependable.

MENDEL PEAR. Originated at New Ulm, Minnesota. Fruit is of good size, about the same as Bartlett, juicy and of fine quality.

3 to 4 ft.....	\$0.60 each; \$6.00 per dozen
4 to 5 ft.....	.75 each; 7.50 per dozen
5 to 6 ft.....	1.00 each; 10.80 per dozen

PARKER. (Minnesota No. 1.) Originated by the Minnesota State Fruit Breeding Farm. This is a good cooking and eating pear. The tree is a large, vigorous, free-growing type. Fruit medium in size, flesh tender. See picture.

3 to 4 ft.....	\$0.60 each; \$ 6.00 per dozen
4 to 5 ft.....	.75 each; 7.50 per dozen
5 to 6 ft.....	1.00 each; 10.80 per dozen
6 to 7 ft.....	1.50 each; 15.00 per dozen

Beta Grape



GRAPES

GRAPES NEEDING NO WINTER PROTECTION

Parcel Post Weight: 3/4 Pound Each

ALPHA. Fruit is larger than Beta and of good quality. Perfectly hardy without covering.

2 year.....	\$0.30 each; \$3.00 per dozen
3 year.....	.40 each; 4.20 per dozen

BETA. The Beta is perfectly hardy, a rapid grower, early bearer, good sized fruit, bunches often weighing one-half to one pound each, and of fair quality. Well adapted for covering porches, fences, etc., or will do well planted out by itself. A fine grape for jelly or grape juice. See picture.

2 year.....	\$0.25 each; \$2.50 per dozen
3 year.....	.40 each; 4.20 per dozen

GRAPES HARDY WITH WINTER PROTECTION

Prices Except Where Noted

2 year.....	\$0.40 each; \$4.20 per dozen
3 year.....	.50 each; 5.00 per dozen

AGAWAM. Dark red, bunch and berries very large.

CAMPBELL'S EARLY. Round fruit, flesh rather firm but tender; quality rich and sweet.

CONCORD. A well-known black grape, medium size, early and of good quality.

2 year.....	\$0.25 each; \$2.50 per dozen
3 year.....	.40 each; 4.20 per dozen

MOORE'S EARLY. Black, earlier, larger and better quality than Concord, but not quite as productive.

POCKLINGTON. White, bunch and berries large.

STRAWBERRIES

ALL varieties offered below have perfect flowers and will bear fruit if planted alone.

Parcel post weight: 3 pounds per 100.

EVERBEARING

PROGRESSIVE. A very popular everbearing strawberry. The fruit is of good size and flavor, smooth, of good color and appearance.

25 for.....	\$1.00	100 for.....	\$2.00
-------------	--------	--------------	--------

MASTADON. The largest everbearing strawberry grown. The berries are uniform and large to the end of the season instead of running small.

25 for.....	\$1.00	100 for.....	\$2.00
-------------	--------	--------------	--------

WAYZATA. This variety has proven far superior to all other strawberries at our nursery. The fruit is large, beautifully colored and the flavor is positively delicious. The plants are large, vigorous, healthy and splendid producers. Whether for home or market purposes, Wayzata is now commonly accepted as the best everbearing strawberry known.

25 for.....	\$1.25	100 for.....	\$3.75
-------------	--------	--------------	--------

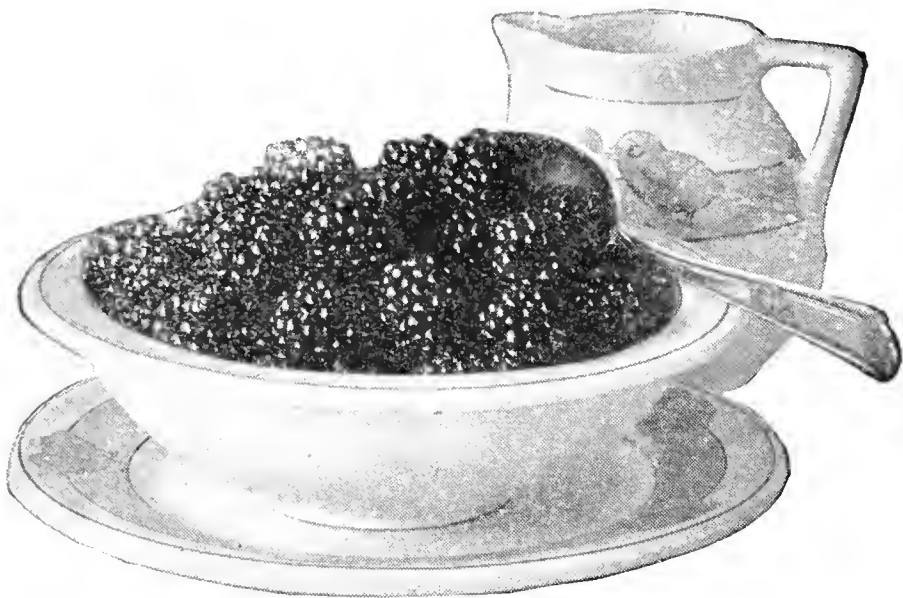
JUNE BEARING STRAWBERRIES

PREMIER. Early. It starts fruiting nearly a week earlier than Dunlap and maintains a heavy production for a long period. The berries are bright red, very firm, solid inside and maintain their size well throughout the season.

25 for.....	\$0.60	100 for.....	\$1.50
-------------	--------	--------------	--------

SENATOR DUNLAP. This is the leading strawberry throughout the United States. It does well everywhere and produces enormous crops of fruit regularly. A first-class shipper and retains its brightness long after being picked. The best market berry.

25 for.....	\$0.50	100 for.....	\$1.00
-------------	--------	--------------	--------



Ancient Britton Blackberry

BLACKBERRIES

Parcel post weight: ¼ pound each.

ANCIENT BRITTON. A popular market variety. The fruit is of fine quality, produced in great abundance.
Per Dozen.....\$1.50 Per 100.....\$7.00
50 or more at 100 rate.

LUCRETIA. This is one of the low-growing, trailing blackberries. Should be mulched to keep the berries off the ground. Fruit large and rich. The earliest blackberry.
Per Dozen.....\$2.00 Per 100.....\$8.00
50 or more at 100 rate.

BLACK RASPBERRIES

GREGG. A late fruiting black raspberry. Berries large and of fine flavor.
\$1.50 per dozen; \$2.50 for 25; \$6.00 per 100.

RED RASPBERRIES

CHIEF. The plant is very vigorous, stocky, very hardy. Season early, one week ahead of Latham. Fruit attractive bright red, firm, quality very good. This variety in some sections has outyielded Latham.
1st class plants \$1.00 per dozen; \$1.55 for 25; \$3.65 per 100; \$26.55 per 1000.

Parcel post weight ¼ lb. each.

Extra heavy selected plants for home gardens—
\$1.50 per dozen; \$2.75 for 25; \$6.50 per 100.
Parcel post weight ½ pound each.

LATHAM. Introduced by the Minnesota Fruit Breeding Station. It is by far the most popular variety grown, both for market and the home garden. The bush is vigorous and hardy without winter protection; bears a heavy crop of extra large fruit of the best quality. The largest and best variety for canning.

1st class plants \$1.00 per dozen; \$1.75 for 25; \$4.15 per 100; \$29.50 per 1000.
Parcel post weight ¼ lb. each.

Extra heavy selected plants for home gardens—
\$1.50 per dozen; \$2.85 for 25; \$7.00 per 100.
Parcel post weight ½ pound each.

CURRANTS

Parcel post weight: 2 pounds each.

RED LAKE. A new red currant originated at the Minnesota Plant Breeding Farm. It is exceptionally large and of fine flavor. This variety has been tested for several years and has proven to be the largest and finest currant for both home and market use.

2 year No. 1.....\$0.50 each \$5.40 per dozen

STEWART'S SEEDLING. Beautiful, light red fruit of large size and good quality. Bush a strong and healthy grower. Produces large quantities of fruit; excellent flavor. A profitable variety for market purpose.

2 year No. 1.....\$0.35 each \$3.50 per dozen

WHITE GRAPE. The best white. Large, mild flavored, good for table.

2 year No. 1.....\$0.40 each \$4.00 per dozen

ASPARAGUS

Price per doz., \$0.50; per 100, \$2.50; 50 or more at the 100 rate.

Parcel post weight: 2 pounds per dozen.

CONOVER'S COLOSSAL. Very large, tender and early.

WASHINGTON. Rust resistant; vigorous grower. Of very fine quality.

RHUBARB OR PIEPLANT

Parcel post weight: 2 pounds each.

McDONALD. A strong growing plant having heavy brittle leaf-stalks. The red skin colors the sauce a rich pink color. Very productive and hardy for this section.

Each....\$0.40 Per 3....\$1.00 Per dozen....\$3.50

RUBY. A new early and delicious red fleshed variety. When cooked the sauce is a rich red color, due to the coloring in both the skin and the flesh. The thin tender ruby red skin need not be peeled. This variety can be used throughout the summer as the stalks remain tender and sweet the entire season. Sure to become a favorite for pies and desserts. Extremely hardy and a good producer in the Northwest.

Each....\$0.50 Per 3....\$1.25 Per dozen....\$4.50

VICTORIA. A very large green colored rhubarb that formerly was considered one of the best. However, since the introduction of the McDonald and Ruby varieties, which far surpass any of the old varieties, the Victoria no longer ranks as one of the choicest.

Each....\$0.20 Per 3....\$0.55 Per dozen....\$2.00

GOOSEBERRIES

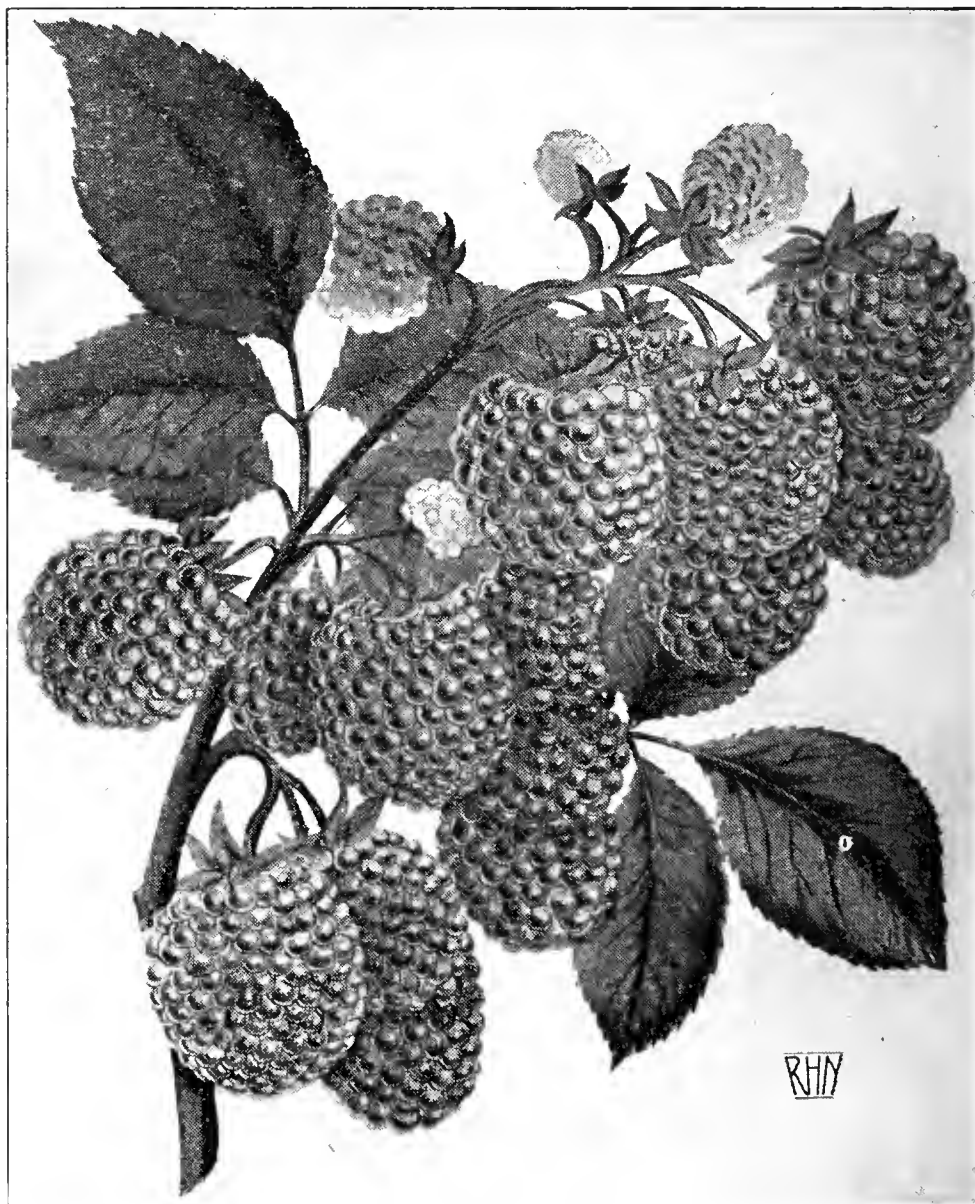
Parcel post weight: 2 pounds each.

CARRIE. The best commercial berry. The fruit is a transparent green, turning to a rich wine or deep maroon color when fully ripe. One of the heaviest producers.

Each.....\$0.35 Per Dozen.....\$3.50

PEARL. A robust grower, free from mildew and very productive. Fruit large and green in color.

Each.....\$0.50 Per Dozen.....\$5.00



Latham Raspberry

THE OUTDOOR LIVING ROOM BECOMES THE FASHION



ROSE HILL NURSERY

Nurserymen

Landscape Architects

MINNEAPOLIS, MINN. OR ST. PAUL, MINN.

Telephone Nestor 7541 — No charge from either city

PLEASE SEE DIRECTIONS FOR REACHING THE NURSERY
ON PAGE 2

We issue a circular in the fall listing the tulips, narcissi and other bulbs we offer at that time.